

Alveoli
Arteria
Vena

Fegato
A. Epatica
V. Porta
Coledoco

Bombace

A. renale
A. spermatica
V. renale
Uter
Fofo e cava renale

Stomaco
Capacitate
A. diata
M. diata
V. diata

Sella intra-dura
A. optica
M. optico
V. optica
Ar. ad.
Cap. del. sacro
Stomaco

Sp. lachrym.
Trach. ad.

Stomaco primitivo
del. tubo

Vena descendente

Ar. diata

Stomaco

Colon
Servico

M.

Spina diata

Pancrea

Stom.

Endite carotidi

Cavità nasale
del. sup.

Fossate embolice

V. carotica

Stomaco

Stomaco

Endite

Endite

Costole

Trachea

Arca del cuore

Corde

Seno aortico

Seno polmonare

Chorda aspera

Fegato

1. Spina

2. Cervicella

3. Spina

4. Spina

5. Spina

6. Spina

7. Spina

8. Spina

9. Spina

112

113



114

115

116

117

118

119

120

Costole

Costa pleurica

Costa vera

Costa vera e parva

Costa

Costa

Costa

Costa

Costa

Costa

Costa

Costa

Costa

Costa

Costa

Costa

Costa

Costa

Costa

Costa

Costa

Costa

Costa

Costa

Costa

Costa

Costa

Costa

Costa

Costa

Spina e sfinteri del collo



Fig. II



Fig. III

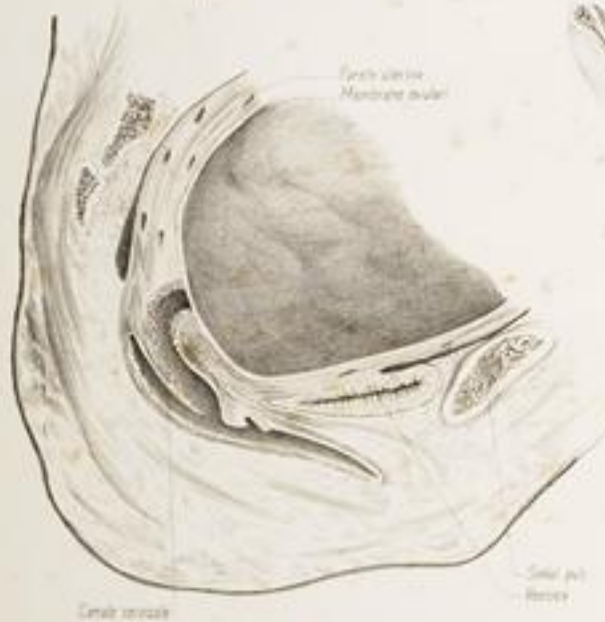


Fig. IV

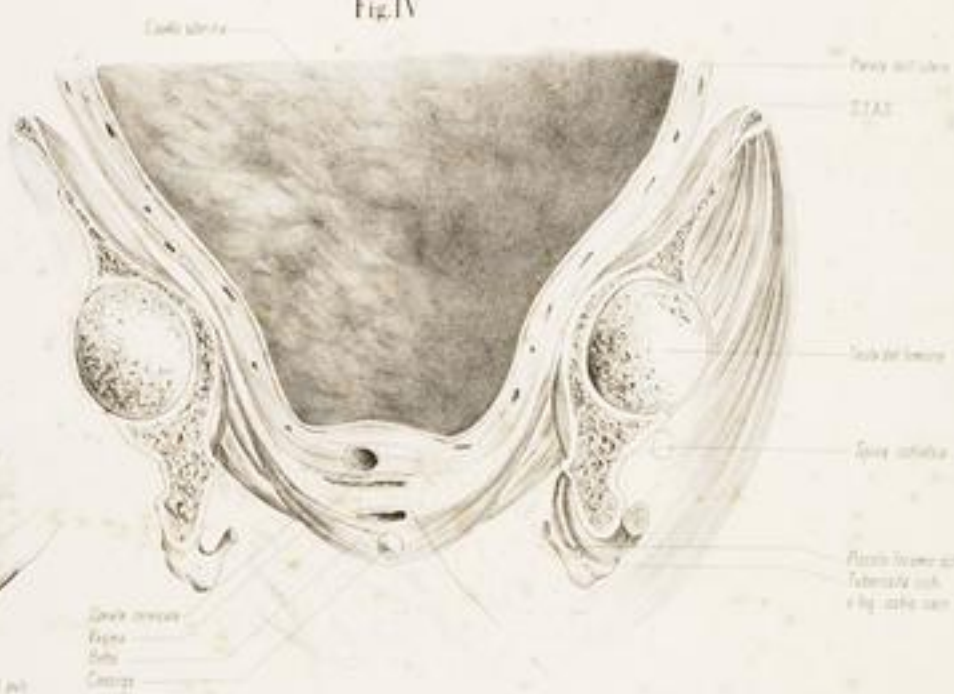
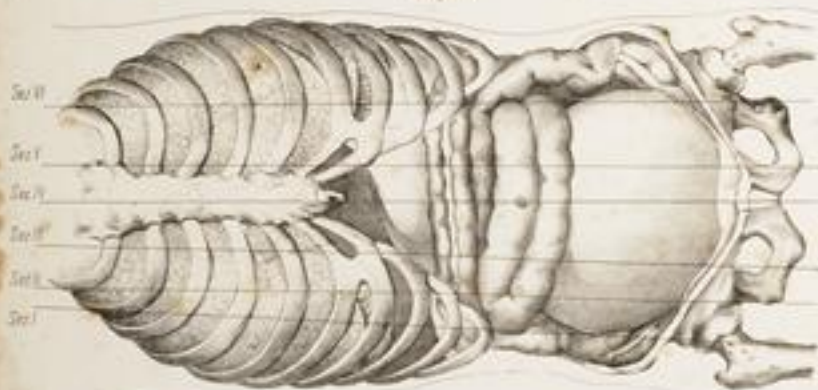
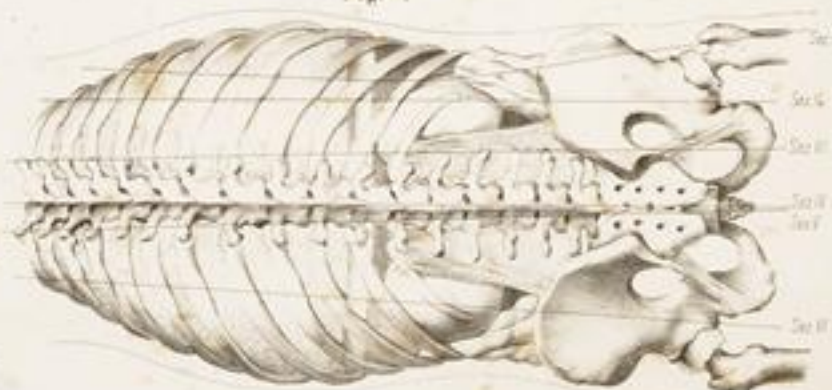


Fig. V

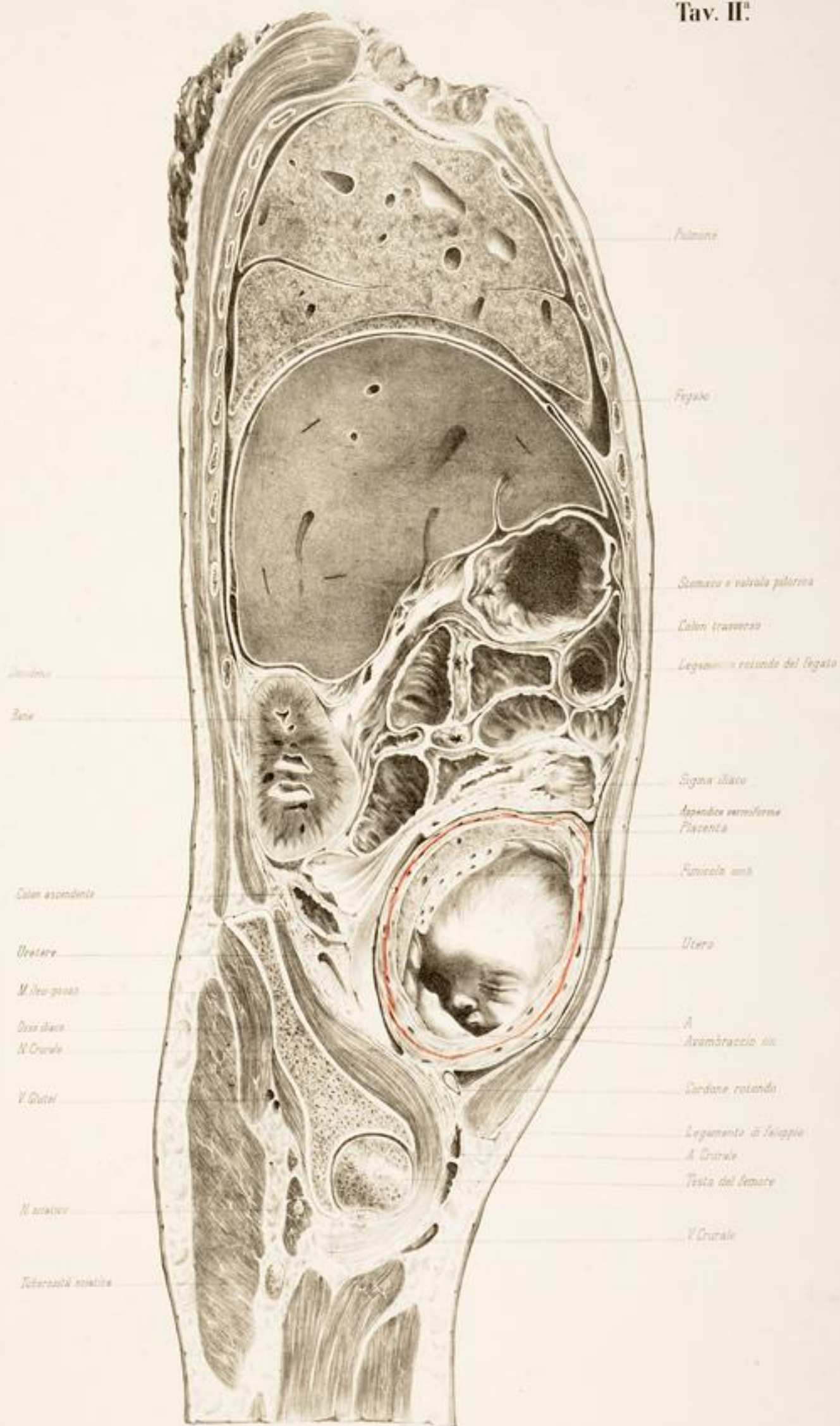


Sax. Grand. de. de. vert.

Fig. VI



Sax. Proprie



Polmone

Rene

Colon ascendente

Uterus

M. ilio-psoas

Denti duri

N. Crurale

V. Crural

N. crurale

Tubercolità ossea

Falange

Fegato

Stomaco o ventricolo pilorico

Colon trasverso

Legamento rotondo del fegato

Signa iliaco

*Appendice vermiforme
Placenta*

Funicolo omb.

Utero

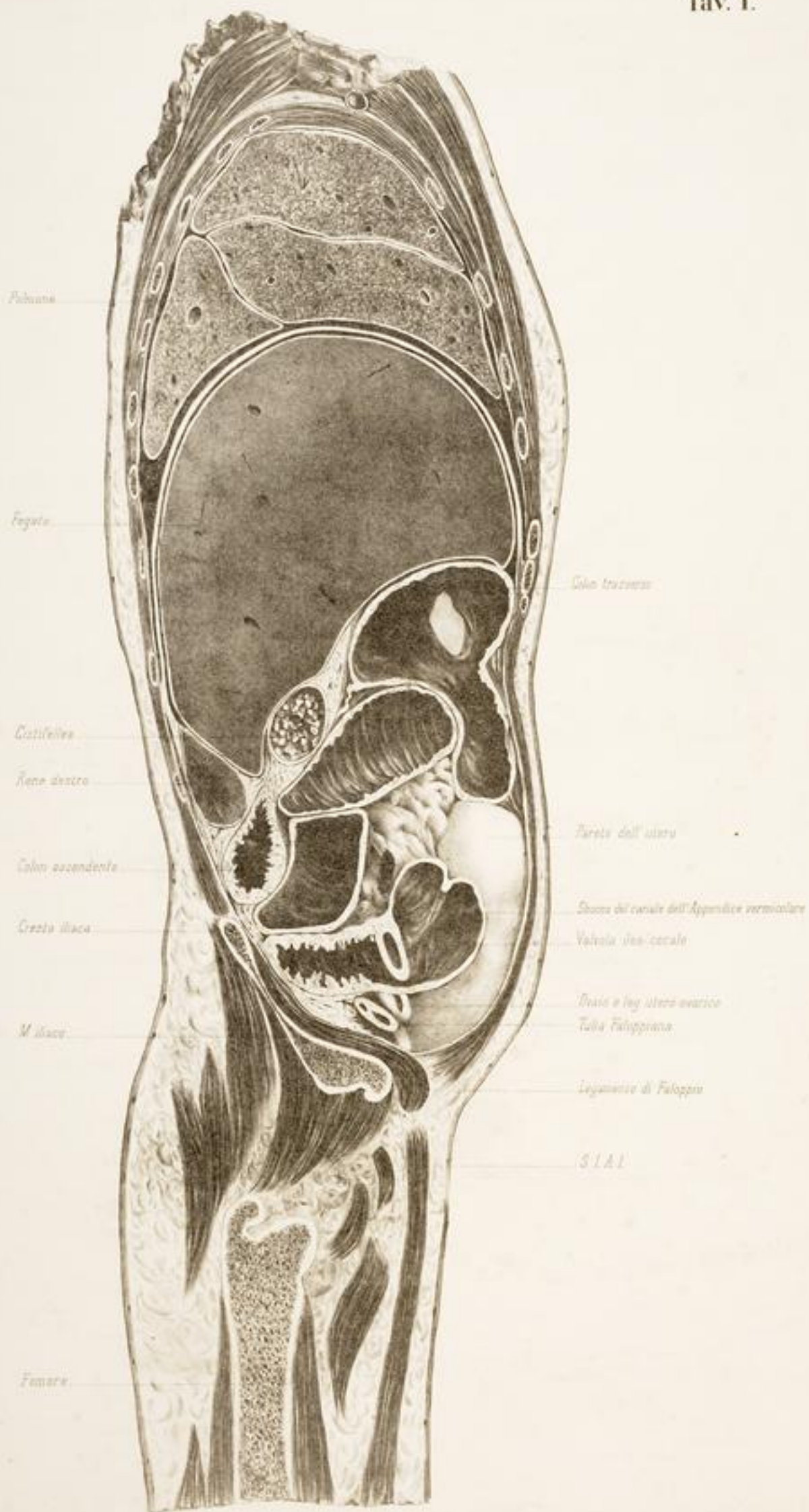
*A
Avambraccio sin.*

Cardine rotanda

*Legamento di Scipione
A. Crurale*

Testa del femore

V. Crurale



Fibra

Fegato

Cotifelles

Rene destro

Rene sinistro

Colo ascendente

Cresta iliaca

M. iliaco

Femore

Colo trasverso

Parete dell'utero

Stoma del canale dell'Appendice vermiforme

Valvola ileo-caecale

Traso e leg. utero ovarico

Tuba Falloppiana

Legamento di Falloppio

S.I.A.I.