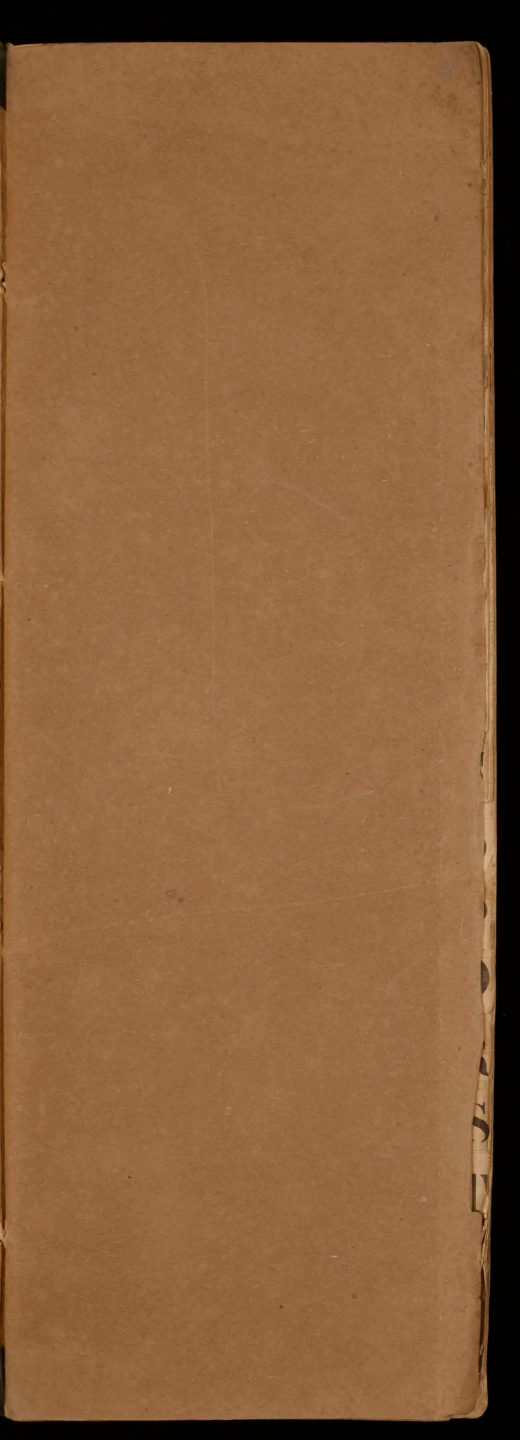
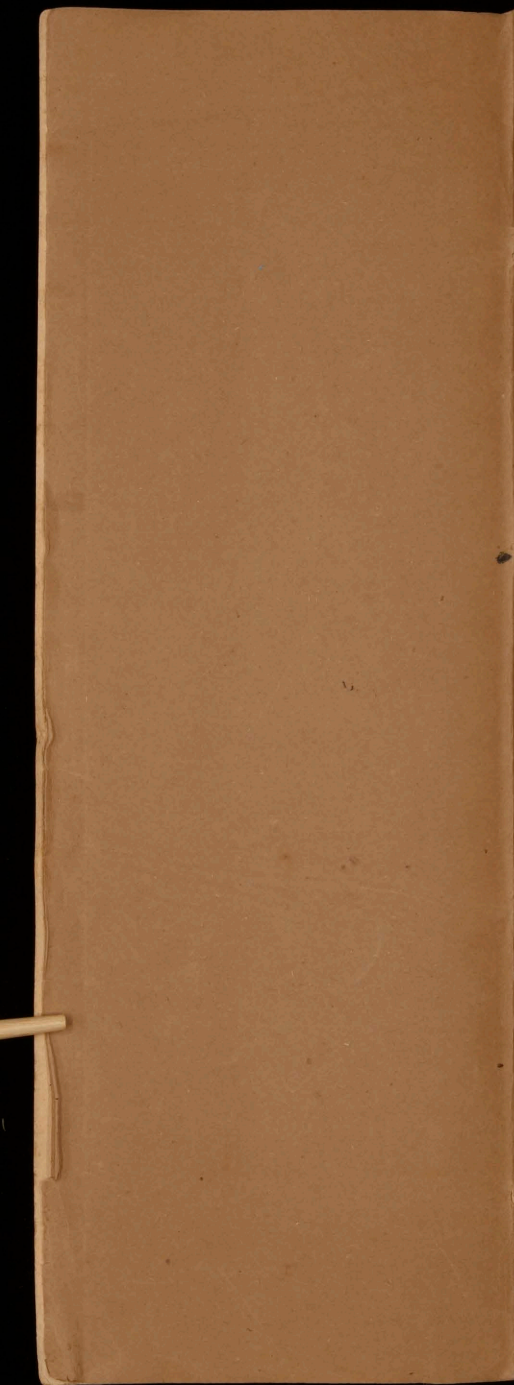


f 20 cm 3.50

1713

1713





A
B
C
D
E
F
G
H
I
L
M
N
O
P
Q
R
S
T
U
V

~~Handwritten scribbles and illegible text~~

Helix in Pl. S. Helix in Pl. S.
 Non-Sin, ~~Abdulus~~ Ch. Longpou in = Jan.
 Mellina = Jac + Bourrypys
 Le chue de Jan. = Pl. S.
 Teyona Fr - Jac = Pl. S.

Gill. Deppe
 Helix in (Helix in)
 Punctus Helix in
 Alousia : prima v. v. v. v.
 Helix in
 Helix in
 Helix in

Handwritten text, likely bleed-through from the reverse side of the page. The text is written in cursive and is difficult to decipher due to fading and bleed-through. It appears to contain several lines of text, possibly including a name and a date.

A
B
C
104
D
E
F
G
H
I
L
M
N
O
P
Q
R
S
T
U
V
X

- Acobolus vinosus*
 - *viridis*
 - *carbonarius* +
 - *thictoides*
 - *nifo-pallidus* +
 - *parphyrosporus*
 - *Leveillei* - *Hyperbicus*?
 - *niveus* +
 - *macrosporus*
 - *maja*
 - *leioleptus*
 - *microsporus*
 - *immeritus*
 - *falicola*
 - *hyperboreus* +
 - *fuliginosus*
 - *glaber*
 - *fundatus*
 - *amethystinus* +
 - *dilatellus*
 - *conglomeratus* +
 - *evacuatus*
 - *caninus*
 - *caucasioides*
 - *cervini*
 - *cubensis*
 - *sphaericus*
 - *Thwaitesii*
 - *ligusticus*
 - *austalis*
 - *lunatus*
 - *atrofuscus*
 - *ovirugineus*
 - *Marchalii*
 - *Archeri*
 - ?
 - *canes-pallida*
 - *Marshallii*
 - *Baileii*
 - *amoenus*

- Asporangium Henry* +
 - *Crouanii* +
 - *parvosporus* +
 - *Leveillei* +
 - *subviridius* +
 - *Woolhopensis*
 - *argentus*
 - *curvicularius*

Alecia Lichenicola

Ascodermis usguranus

Ameghinella australis

Asopharynx *Oudemansii*
 - *ochraceus*
 - *minutissimus*
 - *varipilus*
 - *carneus*
 - *vicinus +*
 - *albicans*
 - *miniatus*
 - *concoloratus*
 - *divertisporus*
 - *granuliforvus*
 - *civereus*
 - *Aurora*
 - *civereus*
 - *lacteus*
 - *Holmiskjoldii*
 - *subfuscus*
 - *vulber*
 - *cinnabarinus*
 - *Sexdecimsporus*
 - *nitidus*
 - *Leporum*
 - *granulatus*
 - *tutarius*
 - *pulcherrimus*
 - *saccharinus*
 - *ciliatus*
 - *tetramolis*
 - *humosoides*
 - *vilis*
 - *tetramolis*

Agynium *flavum*
 - *herbarum*
 - *brunneolum*
 - *tensum*
 - *rufum*
 - *caesium*
 - *sedecimsporum*
 - *guttatum*
 - *Tuckerianum*
 - *atrovirens*
 - *nigricans*

Ascomyces *floridana*
 - *sulfurea*
 - *aurantiaca*

Ascomyces (red. *gymnoascus*)

Ascoscyphus *sphaerophoroides*

Anthopezija

- abietinum Ph. p. 67
Aquifolii Ph. 68
autumnale Ph. 70
Andromedae Sph. 73
alpina Sph. 74
aquilinum Sch. 75
atactus C. 81
acerinus C. 81
acerinum Phg. 82
Andromedae Phg. 85
alba Cl. 106
aurea Cr. 107
aurea Occ. 134
aurantiaca Occ. 135
alpigena N. 140
aberrans N. 143
Adonis N. 145
aeruginosa N. 148
alba Pr. 149
abietinum X 153
alpina St. 157
atrovirens Pr. 168
atrocyaneum Pr. 168
aeruginosum M 173
aceroideus St. 176
arundinacea A. 179
albescens St. 181
aeruginosum Sch. 182
albo-atrum Sch. 184
Arnoldi Tr. 195
alpestris H. 202

B

C

104

D

E

F

G

H

I

L

M

N

O

P

Q

R

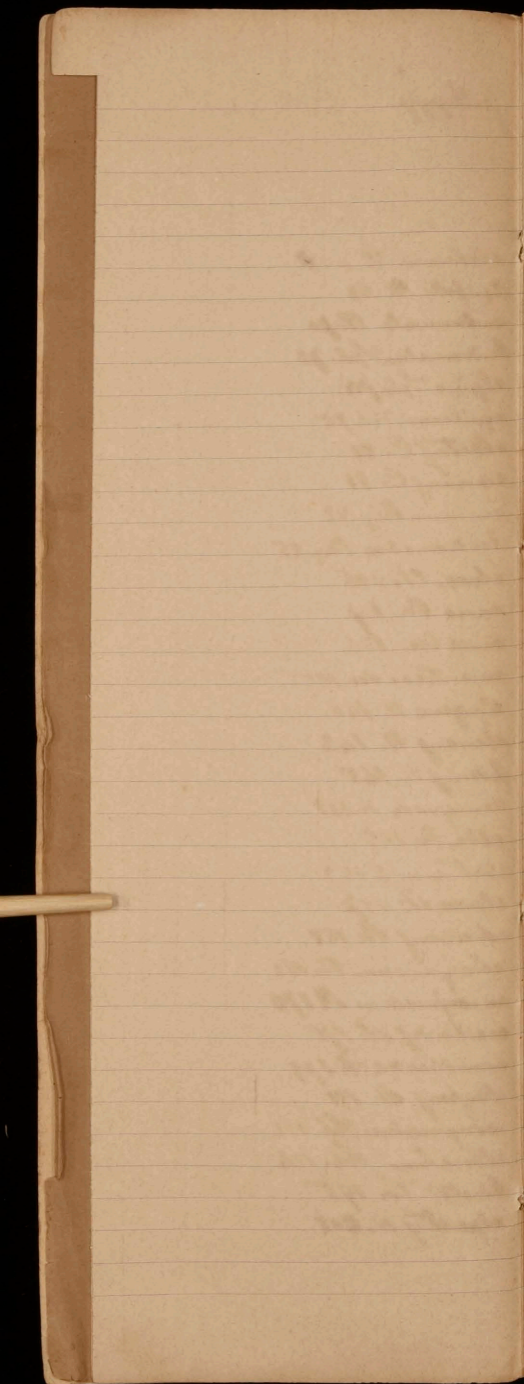
S

T

U

V

X



B

C

D

E

F

G

H

I

L

M

N

O

P

Q

R

S

T

V

X

Boudiera areolata
- marginata

Bulgaria inquinans
- vufa +
- pellucens
- fusco-badia
- pura
- globosa
- nigrita
- Decolorans
- chilensis
- spongiosa
- striata
- nulla +
- Ophiobolus

Blitrydium cucurbitaria
- entoleucum
- subfidra
- abietinum
- fenestrata
- subtropicum +
- triacens
- caliciforme
- Taxodii
- claviformum

Bryoporella
- monilifera

Berggrenia
- aurantiaca

Belonidium
- delicatulum
- aureolum
- minutissimum
- leucorhodinum
- sclerogenum
- filiforme
- andropogonis
- eustegiformis
- exelbiae
- araneosum
- abenae
- amoenum
- vexatum
- Asteroma
- basitrichum
- pallens
- auratum
- melanosporum
- pruiniferum
- pallidum
- Campanulale
- granulosum
- chaptaliozporum

fusum

Subgibbosum

104

X 5

Betulae Pl. 95

Vixi Tr. 131

Betuli. Dec. 186

Brefardolae M. 141

Betulae Pr. 150

Berkeleyanum Sch. 181

Barbana O. 188

Bonordeni H. 202

C

104

D

E

F

G

H

I

L

M

N

O

P

Q

R

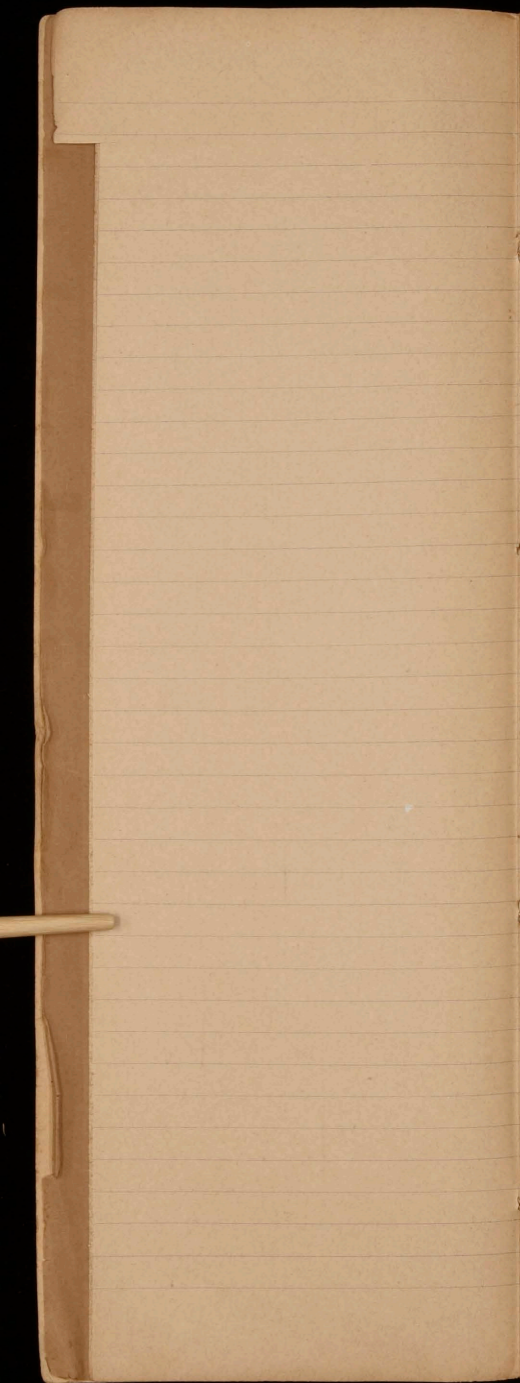
S

T

U

V

XV



C

104

D

E

F

G

H

I

L

M

N

O

P

Q

R

S

T

U

V

XV

- Chloroplium ceruinellum*
 - *aeruginosum*
 - *versiforme*
 - *elatum*
 - *Puiggarii*
 - *luteovirens*
 - *chlorometanum*
 - *omnivirens*
 - *aeruginosum*
 - *fermicum*
 - *stermatum*
 - *vulgarioides*
 - *brasilense*
 - *pueritanum*
 - *amenticolium*

- Coronellaria*
 - *carolinella*
 - *pulicaris*
 - *Delphoidiana*
 - *Aquilinae*

- | | |
|-----------------------------|-----------------------------|
| <i>Comesia</i> Bau. | <i>ciatricolum</i> R. 67 |
| | <i>Cytisi</i> R. 71 |
| | <i>coronatus</i> C. 76 |
| | <i>comitalis</i> Per. 76 |
| <i>Chirarites</i> | <i>convirens</i> n 76 |
| - <i>paradoxa</i> | <i>coronatus</i> C. 77 |
| | <i>Centrae</i> C. 80 |
| <i>Cordaris</i> Fr. | <i>Cotini</i> Rhy. 87 |
| | <i>Callunae</i> R. 95-96 |
| | <i>Cadulvriae</i> R. 100 |
| | <i>crispa</i> Cl. p. 103 |
| <i>Calycopsis</i> | <i>collapsa</i> Cl. 102 |
| <i>pinca</i> | <i>cornigata</i> Cl. 102 |
| | <i>Corvi</i> Cl. 105 |
| <i>ciatrix</i> Cr. p. 107 | <i>circinata</i> N. 144 |
| <i>Craterium</i> Fr. 128 | <i>emerakum</i> Pr. 149 |
| <i>conceivum</i> Fr. 129 | <i>cornucanum</i> X 154 |
| <i>complanata</i> Fr. 129 | <i>Corticum</i> Phr. 161 |
| <i>Crataegi</i> Dec. 135 | <i>circinans</i> Phr. 166 |
| <i>cryptophaea</i> Dec. 135 | <i>caulinolum</i> X 170 |
| <i>coarctata</i> Dec. 136 | <i>Carsthae</i> A. 175 |
| <i>carucopallida</i> M. 137 | <i>cinerea</i> O. 188 |
| <i>cuticularis</i> N. 190 | <i>calyciformis</i> Tr. 196 |
| <i>Carsthae</i> Tr. 197 | <i>Chilletii</i> H. 202 |
| | <i>corneola</i> H. 203 |

Cudonia cirrinalis
 - *lutea*
 - *lucetii*

Cytharia Juncii +
 - *Berteri*
 - *Hookeri*
 - *Tarverii*

Cenangium stricta *apud Pyralis*
 - *vagabunda* *indica?*
 - *tibetica*
 - *inuleata*
 - *impudicella*
 - *liquicolum*
 - *burgidum*
 - *colensoi*
 - *Fuekelii*
 - *fulvifusca*
 - *Bloxani*
 - *phaeosporum*
 - *rubiginosum*
 - *andromedae*
 - *aparinis*
 - *capandae*
 - *Coryli*
 - *Ericae*
 - *pernigulosum*
 - *farnacea*
 - *farnaceum*
 - *fulvo-tingens*
 - *inconstans*
 - *leptosporum* *Colensoi*
 - *magueliae*
 - *Prunastri*
 - *microsporum*
 - *Populorum*
 - *perizoides* *Pseudoplatani*
 - *Salicis* *pruinosum*
 - *Sarthraui* *purpureosens*
 - *tubritidum*
 - *prunastri* β
 - *fascicularis*
 - *triae*
 - *pelidra*
 - *conigera*
 - *corni*
 - *ascicola*
 - *Pini*
 - *Vaccinii*
 - *australe*
 - *Xanthoxyli*
 - *ulmi*
 - *Tabacina*
 - *Syringae*
 - *lupae*
 - *radulicola*
 - *phylloxylla*
 - *pulehervisina*
 - *inulpa*
 - *cinnaomoea* DC.
 - *cinnaomoea* C. et P.
 - *Crassi*
 - *caespitola*
 - *ascicola*
 - *carpinea+*
 - *amseua*
 - *loniceriae+*

C
 104
 D
 E
 F
 G
 H
 I
 L
 M
 N
 O
 P
 Q
 R
 S
 T
 U
 V

- Cenangium* *gyroca*
 - *aggregatum*
 - *plicato-enerata*
 - *Betulae* *betulinum*
 - *pulveracea*
 - *claratum*
 - *Brasilicum* +
 - *acutum*
 - *acutum* +
 - *Cephalanthi*
 - *apertum* + *bicolor*
 - *chlorellum*
 - *arcticum*
 - *fallax* + ?
 - *Juglandis* *tetrasporum*
 - *laminare*
 - *viticolum*
 - *verrucosum* *olivaceum*
 - *Tynni*
 - *rugosum* + *lobatum*
 - *spiveae* +
 - *bicolor*
 - *glabra*
 - *fissa* *lichenoidum*
 - *carnea* +
 - *repandum*
 - *species Cenangii inquirendae*
 - *stale* (S)
 - *castum* (S)
 - *Ravensleyi* (S)
 - *legulare*
 - *helixolum*
 - *perispermum* (Demotia)
 - *platyascum*
 - *purpureum*

- Cenangella* *Tolosum*
 - *aegiviosiale*
 - *reformatum*
 - *trivium*
 - *Northieri*
 - *uvicolaum*
 - *parafiticum*
 - *mithya*
 - *pruinosum*
 - *Ravenelii*
 - *flavo-cinerea*
 - *Rhododendri*
 - *stegivoides Ullrichii*

- Crinula* *Californica*
 - *nigra*
 - *hydrophysifera*
 - *fayana*

Cryptomyces Peltigerae

Chaillertia robina

Ciboria *Tremellota* *carusolia*
 — *ecthinophila* *gibberioides*
 — *firmula* *vinosa*
 — *aluticolor*
 — *ciliatopora*
 — *Sydowiana*
 — *calopus*
 — *pseudotuberosa*
 — *amentacea*
 — *rhizophila*
 — *bolavii*
 — *caucus*
 — *tublerii*
 — *annulata*
 — *Jolyardi*
 — *ament*
 — *fallax*
 — *Kriegeriana*
 — *tabacina*

Calloria *Delicatula* + *C. connea*
 — *rubro-coccinea* — *stimuli*
 — *vulgarij* — *auricolor*
 — *rubinella*
 — *vinulosa*
 — *Sarasiniana* (*Orbitia*)
 — *vinota*
 — *Sarothamni* *minutissima*
 — *tuccinea* *rubro-coccinea*
 — *tucrinella*
 — *rubella*
 — *rubicunda oculifuga*
 — *Primiulae* " "
 — *Peltigerae*
 — *pufilla* ?
 — *auriata* ? *oleosa*
 — *hyalinula*
 — *lutes-viridella*
 — *leucostigma* *occulta*
 — *epipora*
 — *inflatula*
 — *galii* *Eucalypti*
 — *extenuifera*
 — *deliquescent* *rosella*
 — *Fusarioides*
 — *eccinella*
 — *Chrysocoma* *arcinella*
 — *occulta*
 — *glacocapsae*
 — *Antenorea*
 — *decipiens*
 — *olechina* *myriopora*
 — *ovinea*
 — *erythrothyma*
 — *hematites*
 — *refule*
 — *xanthostigma*
 — *coccostigma*

Coryne *sarcoides*
 — *purpurea*
 — *vinota*
 — *aurea*
 — *corticalis*
 — *virescens*
 — *turbinata*
 — *unicolor* +
 — *nigripes*
 — *gyrocephala*
 — *eccemoroides*
 — *elliptica*
 — *similis*
 — *atro-virens* *sp. elongata*

104
 D
 E
 F
 G
 H
 I
 L
 M
 N
 O
 P
 Q
 R
 S
 T
 U
 V
 X &

Cryptoglyphus	angulatus
—	rhopaloides
—	major
—	atrovirens
—	tordiodolus +
—	pinivorus
—	Brentalii
—	pallida
—	patella
—	subreticulata
—	libertianus
—	albo-rufa
—	astroidea
—	bivela
—	Convallariae
—	depmieri
—	linearis
—	longa
—	redguifera
—	microstoma
—	laevis
—	corynesporus
—	virido-purpureus

Cocconyces	tentatum
—	laciniatus
—	limitatum
—	Maydis
—	trigonum
—	triangulare
—	piccae
—	peltiforme
—	Pini
—	quadratum
—	Tumidum
—	umbonatum
—	maris
—	Rhododendri
—	Juriperi
—	Cembrae
—	pluridens
—	Pubi +
—	coronatum
—	verticillor

Cyphelium	ochreatus
—	clarus

Calicium	italicum
—	magellanicum

Cordicaria	musoides
—	coralloides
—	guyanensis
—	prucei +

Folhira Aleatica
Louiseae

1807

Carolina

94

104

D

E

F

G

H

I

L

M

N

O

P

Q

R

S

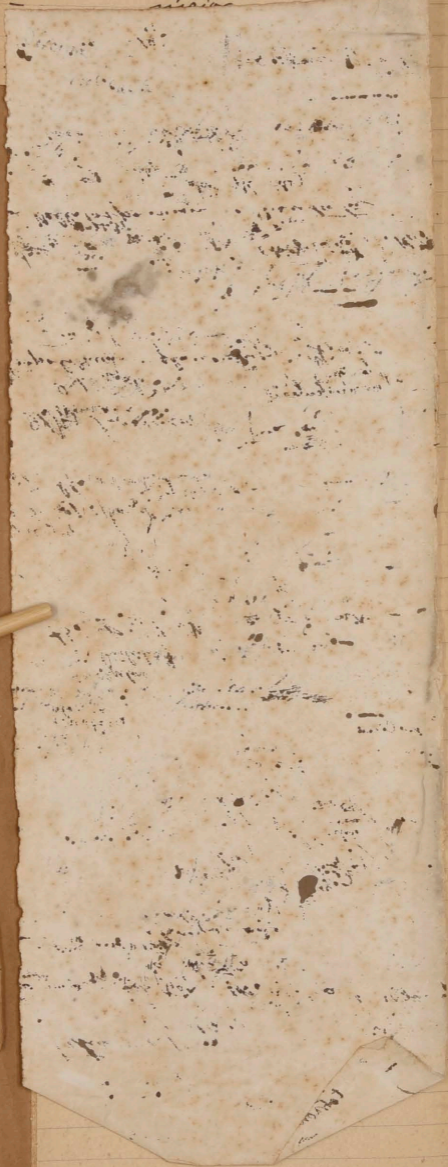
T

V

V

XV

Cryptorhynchus angulatus
Hophalotriton
maculatus



1
2
3
4
5
6
7
8
9
10
11
12
13
14
15
16
17
18
19
20
21
22
23
24
25
26
27
28
29
30
31
32
33
34
35
36
37
38
39
40
41
42
43
44
45
46
47
48
49
50

Tolhara oleastri
 — *louicese*
 — *khamni*
 — *sphaeroides*
 — *cellulosa*
 — *pyrenophora*
 — *cucurbitaria*
 — *Fagi*
 — *platanum*
 — *asterospora*

Deutabuf C. 78
 Dautbi C. 79
 Degenerauf P. 94
 Degenerauf Cl. 104
 Daphana N. 140

D

Tuplicaria Eupatris

Diminuer N. 142
 Orfeolor H. 158
 Decipiens Sch. 182
 Diffidens O. 208

E

F

Tunella macrospora
 — *commutata*
 — *livida*
 — *resinaria*
 — *compressa*
 — *melquispora*
 — *leucocla*
 — *claytonia*
 — *oleae*
 — *similis*
 — *parvula*
 — *conuivens*
 — *excipula*
 — *corrugata*
 — *mauricta*
 — *Coriariae*
 — *ast*

G

H

I

L

M

N

Termetella Fraxulae
 — *Quercina*
 — *Pumilionis*
 — *livida*

O

P

Desmazierella
 — *acicola*

Q

R

Discina
 — *lobulata*

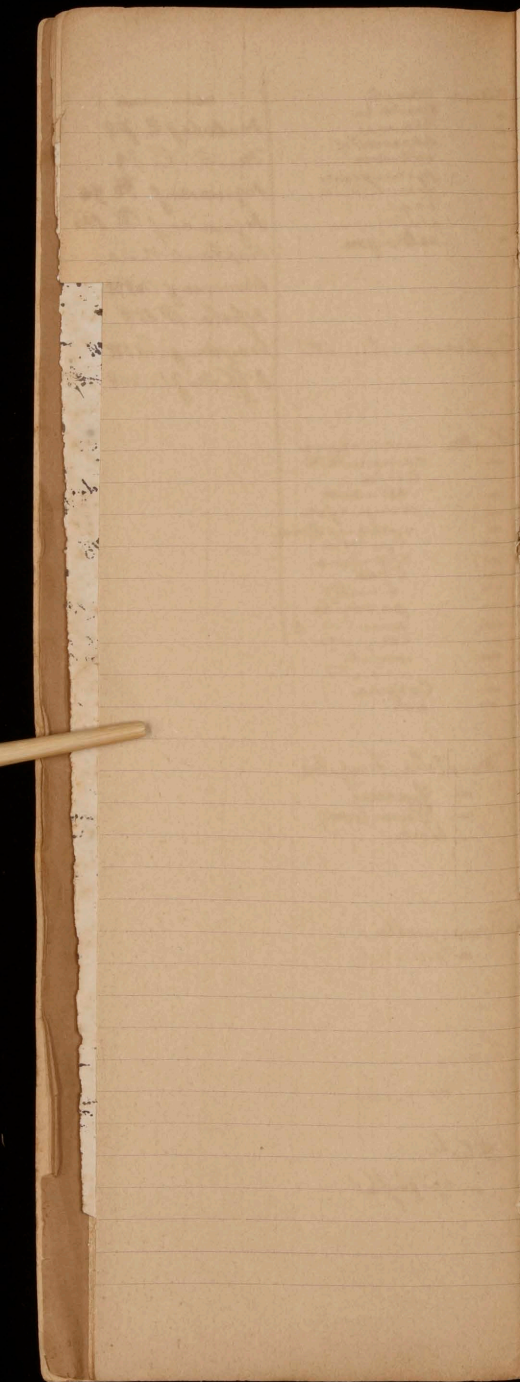
S

Ditula
 — *epiphylla*

T

U

V



E

F

G

H

I

L

M

N

O

P

Q

R

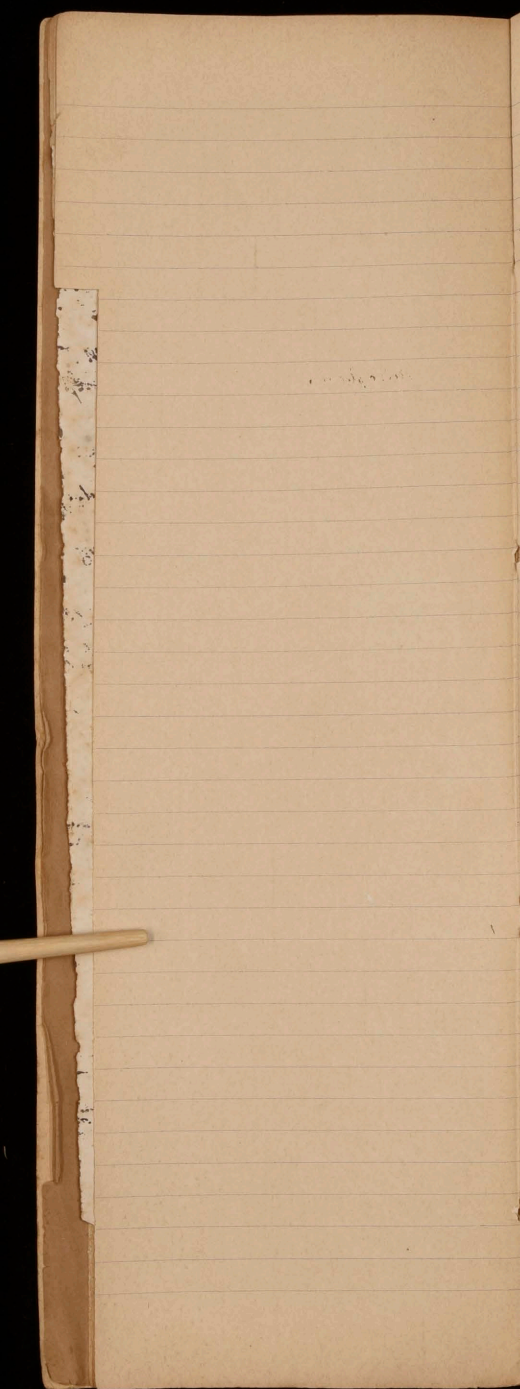
S

T

U

V

XV



Euprosopis

Euphelia Rhinanthi

- Eoaseny Pruni
- campestri
- Torquinetti
- pullatus
- deformans
- ulmi
- Betulae
- nana
- fulgens
- rhizophora

Erinella

- mutabilis
- rhodocarpa
- erraticis
- eriphorae
- brevipes

Excipula

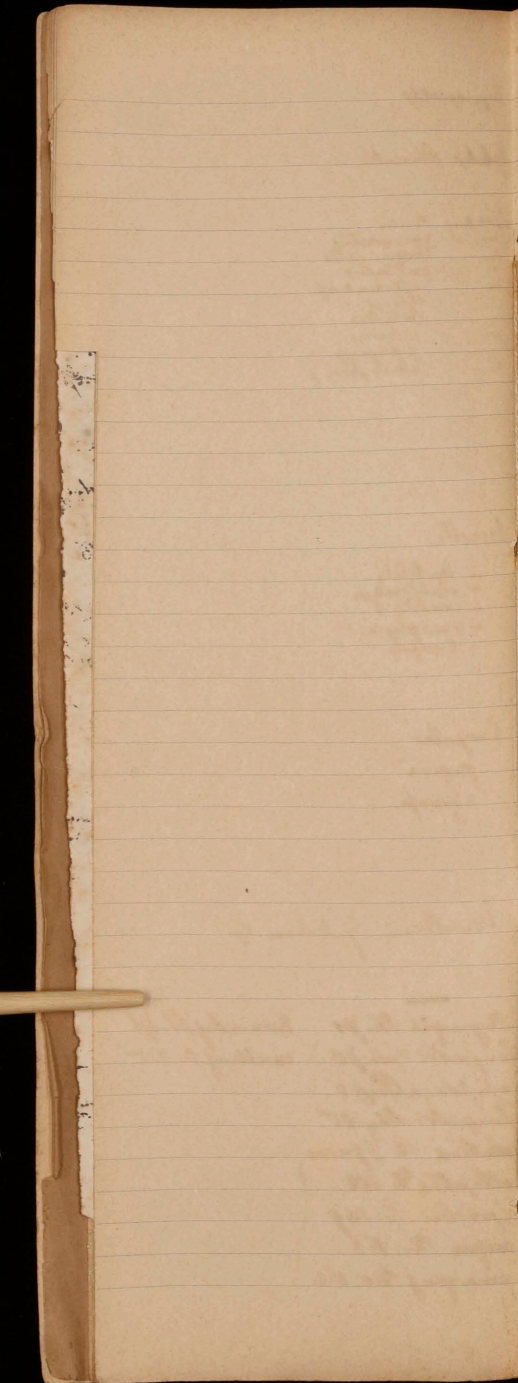
- gregaria
- nigropurpurea

Eranthium Gymbalariae Nym

- Eryngii Ph. 71
- Empetri Sp. 73
- epiphega Pers. 8
- Empetri Ph. 85
- latina Ph. 99-100
- elliptica D. 112
- Epiobii Pr. 149
- exigua Ph. 163
- emergens Ph. 162

Excavatus Lt. 176
excellens O. 205

E
F
G
H
I
L
M
N
O
P
Q
R
S
T
U
V



Febraea congener
— *atarvina* +
— *namnenti*

fimbriatum Ph. 72
Fuekelii C. 99—
laginea Pr. 149
farinosa Pr. 149
fenestrata Lh. 156
foreolaris Cr. 158
Fuekelii Ph. 156
filicinum X 171
flavum N. 174
fimbriata H. 202
fusco-atra H 203

F

G

H

I

L

M

N

O

P

Q

R

S

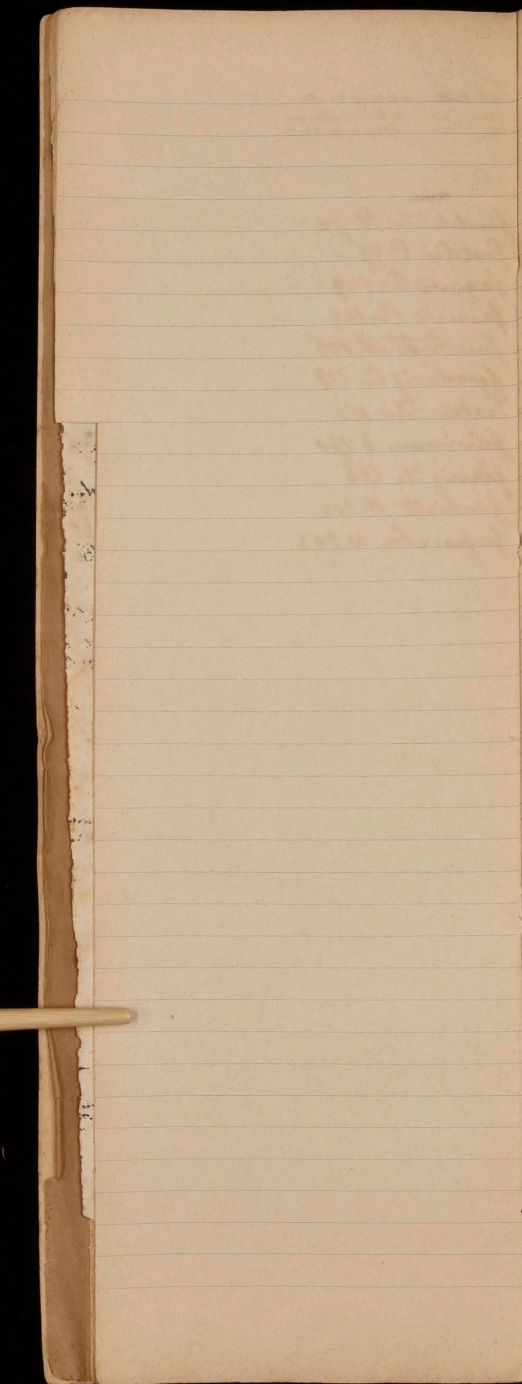
T

U

V

X

Y



G

H
I

L

M

N

O

P

Q

R

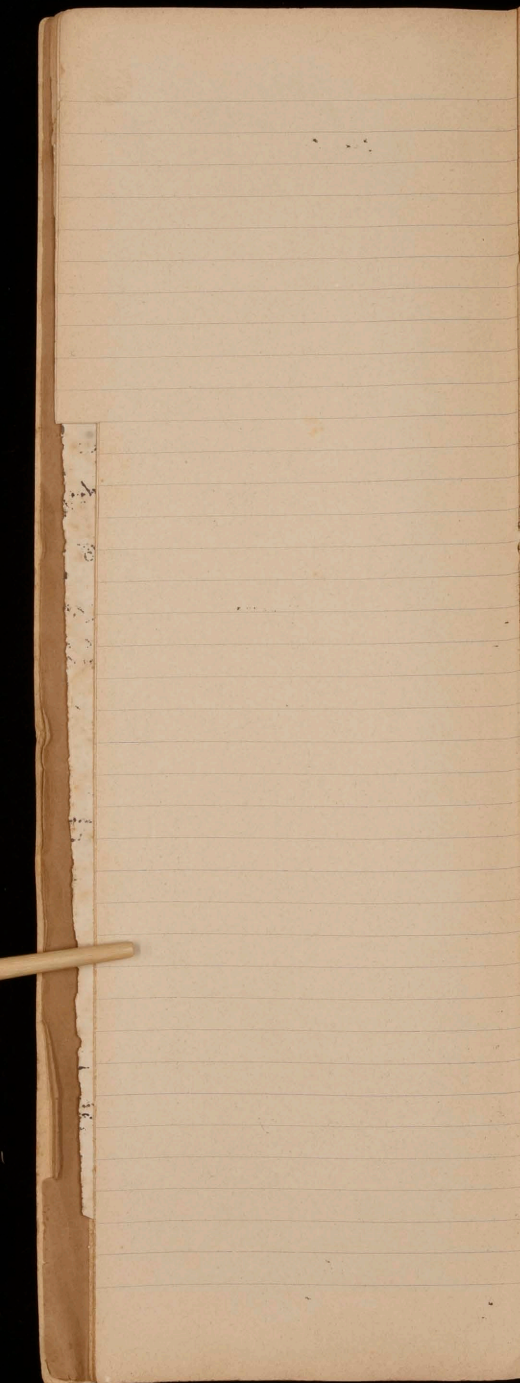
S

T

U

V

X
Y



Gyromitra esculenta
 — *curtipes* +
 — *Duellii*
 — *Gigas*

Geoglossum Walteri +
 — *viscosum*
 — *viride*
 — *velutipes*
 — *umbroscum*
 — *typhagnosphilum*
 — *beckianum*
 — *olivaceum*
 — *luteum* +
 — *nigrum*
 — *microsporum*
 — *hirtum*
 — *globatum*
 — *glutinosum*
 — *glabrum*
 — *diffusum*
 — *carneum*
 — *atropurpureum*
 — *Hemphillii*
 — *Farlowii*
 — *multiforme*
 — *simile*
 — *tremellosum*
 — *irregulare*
 — *puberulum*

Gordonia rhamusella
 — *urecoliformis*
 — *torosa*
 — *belouospora*
 — *radiceola*
 — *atenea*
 — *globulata*
 — *Muhlenbeckii*
 — *rhodospora*
 — *Viburni*
 — *Urecolus*
 — *callunigera* +
 — *Sedi* +
 — *pyxiola*
 — *linnearum* +
 — *minicola* +
 — *gremium*
 — *Urecolus*
 — *myrical*
 — *Castanidae*

Lymnocyclus alutaceus (Ascomycetes)
 — *aurea*
 — *quercus*
 — *caeruleus*
 — *polytrichus*
 — *canadensis*
 — *Sadebeckii*
 — *carnea*
 — *trientalis*
 — *extremus*
 — *anomalis*
 — *bulbatus*
 — *flavus*
 — *reticulatus*
 — *neglectus*

G
H
I
L
M
N
O
P
Q
R
S
T
U
V

Gorgoniceps

- leptosporus
- micrometer
- diemasporeus
- aridulus
- fissellus
- obscurus

Gymnocasella

- Aurantiaea

gracile Ph. p. 66

glacialis Ph. p. 164

graminum St. 179

graminicola St. 180

- Hivella gracilis* +
- *fabaeina*
- *solitaria* +
- *sphaerospora*
- *sulcata*
- *pulla*
- *lidaricae*
- *Perizoides*
- *musilla*
- *venosa*
- *Mousetella*
- *intulac*
- *laevigata*
- *Lufula*
- *gigas* = *Gyromitra*
- *fistulosa*
- *Ephippium*
- *scutellata*
- *elastica*
- *crispa*
- *collata*
- *antiqua* +
- *atra*
- *allipes*
- *Klotzschiana*
- *subcastata*
- *quepinoides*
- *Quelcti*
- *palustris*
- *californica*
- *pythiophila*

- Lysteropeziza* def Br. 152
- Hypopyrrha* Br. 161
- Hysterioides* Br. 162
- Hysterium* X 171
- Hysterium* Tr. 196
- Rem-sphaerium* 0205

Hymenobolus Agardh

Haematomyces orbicularis

- *spadicus*

Haematomyxa Lac. *viridis* -

Habrothetis thymalina

- *valva*

- *diphana*

- *aurantiaca*

- *callosoides*

Hypoxera thujina

- *calycioides*

- *subcorticalis*

H
I
L
M
N
O
P
Q
R
S
T
U
V
X
Y

Heterophaena ^{patella}
 — Plantis
 — Poe
 — Martiani
 — Colneole

Helotium arundinellum

- advenulum
- aquaticum
- auriculum
- album
- acroniti
- antarcticum
- alabastrinum
- albidum
- albumina
- alutipes
- alutaceum
- aureum ^{aff. spissimum}
- atriellum
- alpijes
- adhaerens
- amentis
- albopunctum
- acicularis
- aspegrenii
- aspidorum
- agaricinum
- agaricicola
- asphaerium
- albellum
- abacinum
- acuum
- aspidicolum
- barbatus
- Buccina
- bysiginum
- Bergrenii
- bigogenum
- badium
- breviforme
- bryophilum
- Buccinula
- Calabiae
- carnosulum
- carneum
- ceracellum
- clavuligerum
- campanuliforme
- chloropleurides
- cyathoidium
- chrysostigma
- citrinum
- conscriptum
- cubnicola
- canaliculata
- citrinulum
- coronatum
- crenulatum
- Cyathif.
- Cucurbitae
- claviflorum
- Calycaly
- Cesatii
- Chlorae
- Crapinianum
- crocintinum
- conigerum
- coniplanatum
- concolor
- calopus
- chionium
- collinum
- cubnigenum
- calathicolum
- confirmatum
- confine
- clavatum

Helotium crisolum

- Campanula
- caloricoides
- crispum
- croceum
- crocatum
- crystallinum
- caricinellum
- clavicularis
- crocinum
- castaneum
- ceratinum
- curviforme
- caestianum
- digersellum
- Dryinum
- Dolosellum
- dentatum
- Daphanum
- Derivgraus
- Distellum
- Drosodes
- discretum
- Distingueydrum
- deparcellum
- exaratum
- elegantulum
- equisetium
- epicalamsum
- effugens
- eurotoides
- epiphyllum
- fructigenum
- finestarium
- frumigatum
- fagineum
- fumosellum
- fasciculare
- fulgians
- fuscatum
- f. sub. formis
- flavo-ovoides
- ferrugineum
- fastiduum
- Galbula
- glanduliforme
- garumiferum
- Geogenum
- gisellum
- granulosellum
- Graecile
- Hymenophitum
- Hymnorum
- hyalopes
- humile
- haematoides
- Hymenula
- Helotroides
- Humuli
- Hungaricum
- hydrogenum
- herbicolum
- hyalinum
- Hongkongense
- herbarum
- Infundibulum
- immarginatum
- institutum
- inquilinum
- junceum
- juniperisellum
- inflexum
- improvisum

Erioholzia
 epigaeum

furfuraceus
 portinum

gratum

Gloeocapsa

Helotium immutabile

- indepressum
- imbecile
- Keruepinum
- leucanthum
- lutescens
- lividum
- dimonium *longipes*
- libertianum
- lactolum Cur.
- lactolum Fr.
- laciniatum
- lenticulare
- letoreum
- leucopis
- leucopis
- lutescens
- lilaceum *lateris - album*
- lentum *lateris - album*
- lacteum
- lectipinum *sublivaceum*
- Lepidulum *sublivaceum*
- dens *maculosum*
- melleum (2)
- miserum
- micaceum
- microscopicum
- Menthae
- microstomum
- Mali
- macrosporum Peck.
- macrosporum Sac.
- monticolium
- Marchantiae
- mycophilum
- microsporum *minutissimum*
- microspis
- Mongotii
- nigrescens *myrtillosum*
- nudipes
- nitidulum
- nipterodes *Nectriella*
- nigripes
- ochraceum
- pallescens
- pulchellum
- propinuum
- punctoides
- populinum
- purpureum
- Perula
- phaeooides
- pruinatum (2)
- punctatum
- varium
- pomicolor
- pallidum - *viridum*
- phaeoides
- pineti
- parile *potereforme*
- piriformis
- pertense
- peristomiale (* var *laevigatum*)
- phylophilum
- phormium
- pulvinatum
- Phiala
- pileatum (2)
- procerum *pullatum*
- proximellum
- pygmaeum
- pseudociliatum
- pallidulum
- petasatum
- phyllogenum
- Querceti
- rufo-corneum
- rhytidodes
- rhizophilum
- retinellum *retinellum*
- rubellum

Helotium robustius

- rhodoleucum
- rubicolum
- rubrum *rhizogenum*
- rugipes
- strobilinum
- saprophyllum
- subcarneum (2)
- scrupulosum
- serotinum
- subtile
- Stigmaion
- Sabinae
- subessile *lord datum*
- Solani
- sulphurinum
- soleniformis
- sulphuratum *strumosum*
- spinosae
- simile
- salicellum
- sordidulum
- salicinum
- spicatum
- striatum
- sclerotoides
- sublaticium
- separabile
- stagnale
- scoparium
- sordidum (2)
- sarmentorum
- sublenticulare
- saucellum
- Scutula
- turgidulum
- thalium (= *Pithia?*)
- tubiformis
- tenuissimum
- tenerimum
- tubum
- Tuba *trabinelloides*
- tyrolensis
- Uggillare
- tetraculum
- trabinellum
- triste
- uridulum
- Urticae
- uliginosum
- Urticalis
- ureatum
- Volutella
- virgultorum
- viridifuscum
- vitigenum
- Vasaense
- Vaccinii
- Vincae
- vitreolum
- vitellinum
- xeroplasticum
- xanthostigma
- xylicum

Heliotopsis (Sac)

- caperum

Helotidium

- nanum

Helotiella

- citri

I
L
M
N
O
P
Q
R
S
T
U
V

K

- Karstia Strickeri
- patinelloides
- nigro marginata
- uliginosa
- Tomelypoa
- huellaides
- fusispora
- lignyota
- talvise
- imperfecta

J

- Jicij R. 68
- infula Br. 78
- Junecolum Rhy 82
- Juniperi Cl. 102
- Jicij Tr. 129
- immutabilis Acc. 136
- jenensis N. 1210
- ignobilis N. 142
- Juncei N. 144
- incerta X 153
- Juncei St. 180
- Loaei Sch. 183
- inguinans Sch. 184

Lepidobolus papillatus
 - *brachyarsus*
 - *pilobolus*
 - *hirsellus*
 - *auricularis*

lacinum Ph. 66
laciniata C. 77
Leptocum Ph. 79
Leucocera Xyl. 84
Led. Ps. 94

Laquearia sphaeralis

Led. Cl. 105
Louiseae Joh. 111
laureata Fr. 129
leucora Oec. 134

Lectia lubrica
 - *aquatica*
 - *atra*
 - *chlorocephala*
 - *infundibuliformis*
 - *vitosa*
 - *ochroleuca*
 - *elegantula*
 - *amara*
 - *nana*
 - *chlorocephala*
 - *atrovirens*
 - *humicola*
 - *viridis*
 - *marcida*
 - *platyrada*
 - *stevensonii*
 - *rufa*

lunulae N. 143
lamyi N. 145
lauri St. p. 155
libertiana Ph. 160
luridula Ph. 163
laetissima Ph. 167
longum X. 171
lunulae St. 179
lageniformis R. 190
leucomela H. 202

Leptopeziza Post.
 - *groenlandica*

lojkae H. 203
linariae H. 203
lancea H. 203

Lepostictis conigena

Lecanidion fusco-atra *Hummelidii*
 - *atrum*
 - *dipolor*
 - *Cyrtosporina*
 - *rhizogena*
 - *proxima* *pusillum*
 - *hypocrici*
 - *atro-alba*
 - *aquatica*
 - *subtestum*
 - *atro-fusca*
 - *amphibolium*
 - *herbarum*
 - *baquiliatum*
 - *altaveticum*
 - *indigotica*
 - *sepi-neola*
 - *truncatulum*
 - *tuberculorum*
 - *pusillum*
Lanzia *cleratum*
 - *flavo-rufa* *anceps*

L
 M
 N
 O
 P
 Q
 R
 S
 T
 U
 V

- Lachnea alpina
- albicincta
- aretespora
- albotaeta
- argillacea
- abundans
- aetnaca aurantiopsis
- ascoboloides
- altopadicea
- alplutosa
- arenosa
- badio-herby
- bulbosa
- brunnica (bristling)
- calensis Barbae
- cretea
- cingata
- crinita
- coprinera coprogena
- Carium
- carneo-rufa
- cornubensis
- carneo-ruginea
- caerulea
- Chateri chrysothrix
- carnosa

- diversicolor
- decolorans
- diversipora
- ditricha
- dalmenensis
- erecta
- eridonia
- erminea
- epichrysea
- epipartia
- erinacea
- fusciparva
- floccosa
- fusicarpa
- fusco-ana
- fusispora
- fraudans
- fulgens
- fibrosa
- finitii flavo-brunnea
- fusco-atra
- flava
- fureti
- fulvipes
- pastor
- glaucalis
- gregaria
- glumarum
- thirtococcinea
- hypocrateriformis
- hirta
- Hindsi
- hybrida
- hemisphaerica
- Haydenii
- hirtella
- japonica
- insititia
- Kerguelenensis
- Lusatiae lacticola
- livida

- Lachnea ^{limbophila} ^{fulvipes} lamuginosa
- luteo-pollens
- Quotricha
- lasioboloides
- leucophaea
- lentiformis
- limbophila
- maculosa
- muralis
- monilifera
- macrospora
- melaloma
- melastoma
- uninata
- macrospora
- melanospora
- nigricans
- nigrella Notarissiana
- ovata
- obliqua
- occidentalis
- porphyrea
- pubida
- pilosa
- proboscidea
- pusio
- phlyctipora pygmaea
- patarina
- Plumieri
- praecipua
- pulcherrima
- peltata
- rariopus
- radicylata
- roseola
- rubra
- Rozeri
- scutellata scutelloides
- stygia
- subulki
- sublivida
- stercorea
- stricta
- semitosta
- squamosa
- stenatoma
- setosa
- septata
- Negrojæ
- tricholoma
- trechispora
- tomentosa
- texensis
- theleboloides
- tenuis
- umbrata
- umbrosa
- umbrinum
- vitellina viridi-rubescens
- vernalis
- verruculosa
- Wimpfelmanna
- Woolhopei
- xanthomela

- Lachnella pulverulenta
- punctiformis
- ~~pulverulenta~~
- papyracea
- plano-umbilicata
- pygmaea
- puncti
- palcarum
- Platani
- Piceae
- patrifomis
- pumica
- psagopus parvula
- prasina
- Peridomeini
- penicillata
- pyrrotoma
- patula
- puberula B. & C.
- puberula (Lach.)
- Pteridij
- papillaris
- rarij
- info-olivacea
- relicina
- rosea
- rubiginosa
- Rhythmae Pelonii
- resinaria
- rosida
- rhaphidoper
- roseo-ellip
- spiraeicola
- sulfurca
- sybriidula
- Stipal
- spirotricha
- strigosa
- spirotricha
- Scleromacheri
- succina
- stipata
- Spharia
- striatula Spirotricha.
- subtilissima
- subochracea
- Stevensoni
- tenella
- scutelliformis
- sphaerocephala
- stericola
- similkina
- seminif
- scabrobiliosa Starizii
- setigera
- sulphurella
- solfatera Scleriformis
- syriaca
- scyphiformis
- scabris
- testaceo-rufa
- tricolor
- torva
- tumida
- Trichodea Cantillo
- trifomis
- thysoides
- Thiaae
- translucida Ulei
- Ulicis
- Umaniae urticae
- umbilicata
- uncinata
- virginica virginella
- variegata
- viridula vulpinia
- velutina
- velutarioides venturinae
- varicolor
- villosa
- viridicoma
- venatoria
- Winteri
- Wolkei

- Mitella* *Smitthiana* +
 — *undosa*
 — *tremuloides*
 — *semilibera*
 — *rimotipes*
 — *pauciflora* +
 — *patula*
 — *hiemalis*
 — *ligata*
 — *fissa*
 — *elata*
 — *esculenta*
 — *deliciosa*
 — *subia*
 — *caroliniana*
 — *cava*
 — *conica*
 — *crassipes*
 — *bispora*
 — *amphisticeps*
 — *vaporaria*
 — *crispa*

- Mitula* *glabra*
 — *viridis* +
 — *antarctica* +
 — *hololeuca*
 — *muscicola*
 — *violacea*
 — *paludosa*
 — *muscioides*
 — *nummularia*
 — *nucifera*
 — *vitellina*
 — *lutescens*
 — *inflata*
 — *fruticosa*
 — *elegans*
 — *exigua*
 — *crispata* +
 — *ferruginea*
 — *Berteri*
 — *lutea*
 — *alba*
 — *cucullata*
 — *olivacea* (v. *Geoglossum*)
 — *Saccardoae*

- Mitula* *gigantea*
 — *regularis*
 — *heteromera*
 — *lingua*
 — *verruculosa*
 — *Patella*
 — *plicata*

Melilotus *erectata*

Melospila *hyperici*
 — *pelligeriae*

M
N
O
P
Q
R
S
T
U
V

- Mollisia acicola
- alimatis
- atro-rufa
- Artemisiae
- aquosa
- astericola
- alligata *arctata*
- atro-cinerea
- atrata
- arenevaga
- apicalis *auricolae*
- arenula
- aquifoliae
- aureliella *alcedina*
- avena *aberrans*
- aborigena
- agrostiformis
- aternina
- brassicicola
- Bullii
- Browniana *benesuada!*
- betulicola
- brachyspora
- cythelloides
- caespiticia
- complicata *caesia*
- corellensis
- coprophila
- cinerea *lowyeri*
- coerulea
- Chailloti
- Carduorum
- calamitica
- campanulata
- castanea *cymbispora*
- caesia
- Cerastiorum
- citrinella
- Dehni
- Nutella
- denigrata
- Diolor
- emergens
- elacina
- erumpens
- evulscens
- Eubli
- excelsior
- epitypa
- epiphyza
- elaphinae
- exidella
- epithalina
- exiliens *Earliana*
- Euphrasiae
- Eryngii
- fusca *fusco-atra*
- fregiana
- foliicola *funigata*
- folicum
- fusidula
- praeta *Faciunensis*
- foecunda
- foecula *floriformis*
- fibrifera
- fallens *glauca*
- fusco-rubra
- Gentianae
- Galii-veri *gelatinosa*
- Gramineae
- Galii *glomerata*
- grapponea

- Heterospora*
- Mollisia heterosporoides
 - heteromeli
 - hydrocola
 - hyalinis-alba
 - hydrophila
 - imbricata
 - imbricella
 - ilicicola
 - introvrida
 - imbricata
 - infixa
 - incarnata *incrustata*
 - Iridi
 - jizora
 - jilpatala
 - Kolaensis
 - Kaluniae
 - Karstenii
 - lupulina
 - leucostoma
 - leucostigmoides
 - Lymnula
 - luteo-rubella
 - ligni
 - laevigata
 - lachryata *lycopodi*
 - luctuosa
 - litoralis *lycopodii*
 - larinia
 - lichenicola
 - lupulorum
 - Libeina
 - laevistris
 - leucostigma
 - livido-fusca
 - Malii *velo*
 - microstigma
 - maura
 - montiacola
 - melaleuca *melaleuca*
 - microcarpa *melaleuca*
 - multiophthalmura
 - Mercurialis
 - melogramma
 - myzocopron
 - multipunctata
 - melichroa
 - miliaris
 - millepunctata
 - melaleuca
 - minutula *minuta*
 - Mollugini
 - maculans
 - neophila
 - nigella *nigritella*
 - nervigena
 - nigricans
 - obitaeo-*sluta*
 - olivacea
 - opalina
 - Oenotherae
 - phaeoideae
 - punctum
 - plantaginis
 - pallens
 - protopus
 - Punctum
 - phymatodes
 - planodica
 - perpusilla
 - Pineti
 - paulula *phaea*
 - palustris
 - parvopunctata
 - pteridina
 - pluvata
 - perforata
 - personata
 - prunicola

Mollinij fusilla Pinastri.

- Poggoni
- Poak
- Rubi
- Rhinanthi
- ramealis
- rimirata
- rubicunda
- retincola
- Russelli
- retrorsa
- regalis
- Rozei
- rugulosa
- rufula Preluis
- rosula
- riparia
- Riceia
- ribesia
- rhododendricola
- rubidula
- salicaria
- subgila
- saliceti
- subconica (subconica)
- sordida
- sublivida
- scirpina
- sabatna
- sanguinolenta
- stenostoma
- succinea singularis
- stramineum
- solidagineis
- tenax
- sphaeroides subbittaria
- saccharifera
- thibum
- tunicata
- tictoides C. E.
- tictoides Saa.
- scirpcola
- subelata
- sarmentorum
- subrotundis
- tictella
- simillima
- tasmatica
- Trollii
- thallopila
- thalictri
- tamaricis
- Teucrii
- Typhae
- thavelle
- Uredo
- ulcerata
- umbonata
- uva
- vulgaris
- Vitis
- vincta
- viticola
- versicolor
- viburnicola
- ventosa
- Vossii

N
O
P
Q
R
S
T
U
V

Myxopezia (Coryne (collec.)
— mucida.

Molleriella Wint.

- multivalve* Ph. 68
megathecium C. 88
microsporum Ph. 97
maximum Cr. 107
mutila Det. 109 -
minutissima N. 138
Mimutula N. 146
minutula X 154
macrospora Phr. 162
minimum X 169
marginate St. 176
mollis St. 187 -
minus O. 206
magnum O. 206

Sholee

[Faint, mostly illegible handwritten text on a piece of aged paper with significant foxing and staining.]

N
O
P
Q
R
S
T
U
V
X
Y

Nodecta flavo-virens

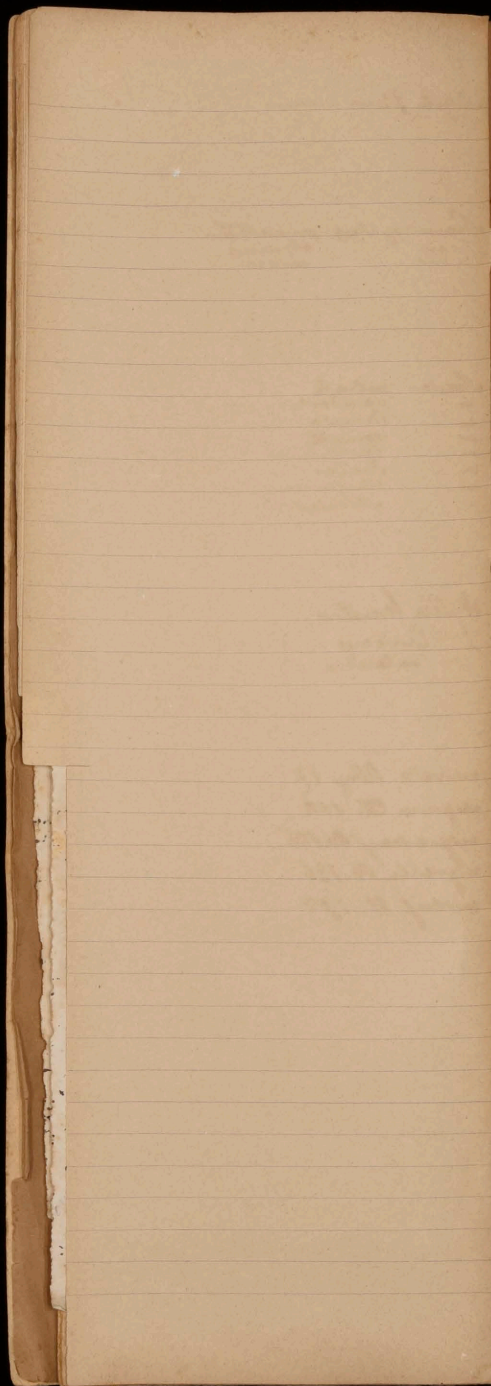
Psenucyclus pinastri
— *alpinus*
— *nivea*

Psaria valvata
— *paradora*
— *laun+*
— *seriata*
— *laetissima*
— *lucis*
— *canicum*
— *stouis*

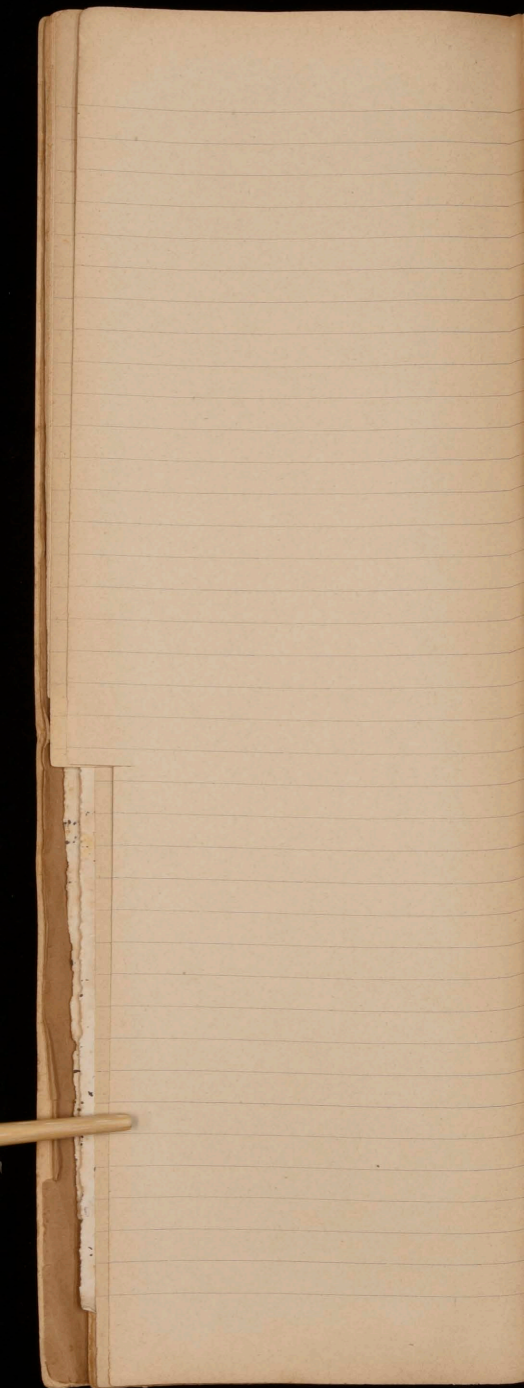
Niptera lacustris
— *Coriariae*
— *antarctica*

nervale Nhy. 87
nigrum Cl. 102
nigrescens Oc. 136
nigrella Oc. 136
niveus N. 170

N
O
P
Q
R
S
T
U
V
X
Y

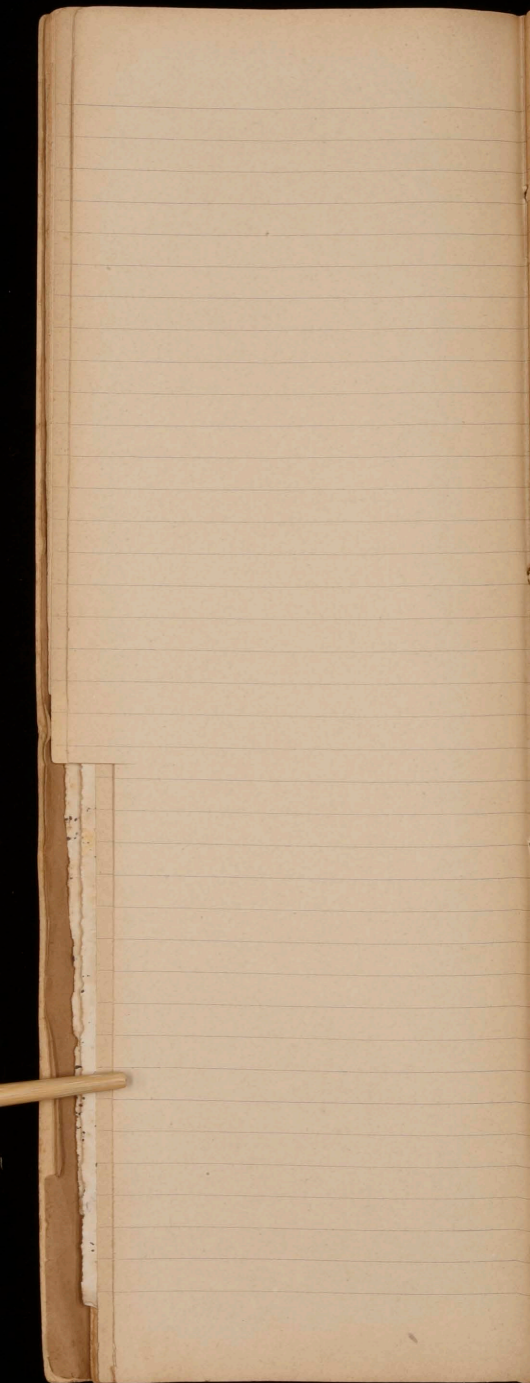


O
P
Q
R
S
T
U
V
X



O
P
Q
R
S
T
U
V

XV



O
P
Q
R
S
T
U
V
X

1871
1872
1873
1874

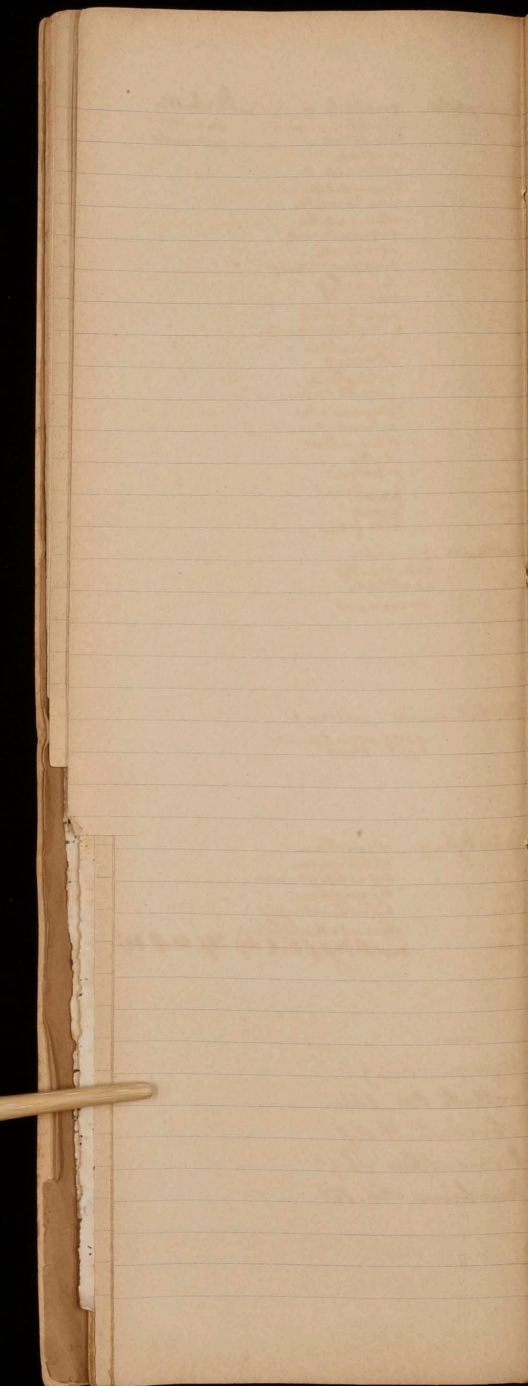
<i>Omphophila</i>	<i>squalida</i> +	<i>Starbachi</i>
-	<i>strobilina</i> +	<i>succinea</i>
-	<i>lilacina</i> +	<i>prasinda</i>
-	<i>viridella</i>	
-	<i>violacea</i> +	
-	<i>limbata</i>	
-	<i>umbonata</i>	
-	<i>sternata</i>	
-	<i>subspadicea</i>	
-	<i>obtrita</i>	
-	<i>quiquiflora</i>	
-	<i>tenella</i>	
-	<i>radicata</i>	
-	<i>retrorsita</i>	
-	<i>Northiana</i>	
-	<i>vanella</i> +	
-	<i>clara</i>	
-	<i>ciliifera</i>	
-	<i>jauntina</i>	
-	<i>ferruginea</i>	
-	<i>atrovirens</i> +	
-	<i>Bäumli</i>	
-	<i>indica</i>	
-	<i>sibirica</i>	
-	<i>paradoxa</i>	
-	<i>aurea</i>	
-	<i>albifera</i>	
<i>Ocellaria</i>	<i>parvula</i>	
-	<i>accidivoides</i>	
-	<i>ocellata</i>	
-	<i>succinea</i>	

Orontotrema minus
 - *majusculum*
 - *diffidens*

Ophiodiopsis *liquetum*
 - *citrinum*
 - *baillifianum*
 - *fragosum*
 - *Carolinense*
 - *leueschaetia*
 - *morbi-dum* (Pak. Rep. 21/1. 68. 18)

Oxycocci Pl. 69
ocellata Occ. 134
obvelata N. 147
Oxyacanthae Pl. 176
Oenotherae Sch. 162

O
P
Q
R
S
T
U
V
X & Y



P
O
R
S
T
U
V
X &

1850

Podophaecidium terrestre

Pocillum Boltonii
— *Ceati*
— *hypophyllum*
— *americanum*

<i>Propolis</i>	<i>fulva</i>	
—	<i>foveae</i>	
—	<i>leucanona</i>	
—	<i>tumidula</i>	
—	<i>microsticta</i>	
—	<i>transversalis</i>	
—	<i>circinata</i>	
—	<i>Rhododendri</i> (Ved. Phac. d. m.)	
—	<i>chrysophaea</i>	
—	<i>rubella</i>	
—	<i>cylindrica</i>	<i>puberulentum</i> Ph. 71
—	<i>parallela</i>	
—	<i>foreolaris</i>	<i>punctiforme</i> Ph. 72
—	<i>Psychotriae</i>	
—	<i>Leonis</i>	<i>Pharmicae</i> Sch. 75
—	<i>lobata</i>	
—	<i>hysterina</i>	<i>perisporifera</i> Ny. 76
—	<i>hysterioides</i>	
—	<i>exigua</i>	<i>Piceae</i> C. 80
—	<i>lugubris</i>	
—	<i>epilobii</i>	<i>granitatum</i> Ph. 83
—	<i>strobilina</i>	
—	<i>Betulae</i>	<i>Pedicularis</i> Thuy. 87
—	<i>minutula</i>	
—	<i>album</i>	<i>propolidium</i> Ph. 96
—	<i>faquiae</i>	
—	<i>pulchella</i>	<i>Pini</i> C. 98
—	<i>sphaerelloides</i>	<i>pinicola</i> Ph. 99
—	<i>circularis</i>	<i>Pheniciae</i> Cr. 107
—	<i>glauca</i>	<i>pyrenospora</i> Dob. 110
—	<i>parasitica</i>	<i>Popularum</i> Tr. 131
—	<i>Rubi</i>	<i>petiolicola</i> Tr. 131

Propolina

<i>Propolidium</i>	<i>glaucescens</i>	<i>paradoxa</i> N. 143
		<i>putilla</i> N. 143
		<i>Pae</i> N. 148
		<i>parallela</i> Br. 149
		<i>purpuratula</i> Br. 152
		<i>parallela</i> X 153

<i>Pleistictis</i>	<i>propolidioides</i>	<i>pallidula</i> Cr. 159
—	<i>ptaridina</i>	<i>punctiformis</i> Cr. 159
—	<i>lichenicola</i>	<i>puberula</i> C. 160

<i>Phacidiella</i>	<i>elegans</i>	<i>paradoxa</i> Ph. 165
		<i>Peltigerae</i> Ph. 166
		<i>pinata</i> N. 174
		<i>propolidioides</i> M. 172
		<i>pachyspora</i> St. 175
		<i>Populae</i> St. 177
		<i>polyosca</i> St. 179
		<i>Pinastri</i> Tr. 194
		<i>Patella</i> H 201

P
Q
R
S
T
U
V
X

Phacidium abietinum
 — bruneolum
 — Callunae
 — cicatricolum
 — ^{Cyrti}
 — ^{Dageneri}
 — exasperans +
 — elegantissimum
 — ^{Enyngii}
 — glaucophicum
 — ilicij
 — laevum
 — Ledii
 — minutissimum
 — pulverulentum
 — ~~oxycocci~~
 — plicatum - infestans
 — ^{Pyrae}
 — ^{Thomatoidej} + - nitidum
 — rugosum
 — ^{Rubi}
 — ^{Tetracerae}
 — sphaeroides - Clematidis
 — simulatum
 — sparsum
 — verrucosum
 — talicinum - ^{sparsum}
 — ^{Vaccinii}
 — ^{Vinciae} - ^{fragrantum}
 — striatum
 — album
 — heteromelis
 — microsperum
 — mollisoides
 — pupillum
 — ^{arbuti}
 — ^{Citriosum} +
 — affine
 — humigenum
 — depuratum
 — nigrum
 — aluum
 — fimbriatum
 — haerens sphaericum
 — ^{linthii}
 — ^{Caltha}
 — ^{Hyperici (Sphaeropezia)}
 — ^{gracile}
Phacidozys
 — alpina

Pseudopeziza autumnale
 — vernale
 — Dianthi
 — repandum
 — Radianj
 — oxigena +
 — Medicagoj
 — ^{Trifolij}
 — ^{Vaccinii}
 — ^{Ranunculi}
 — ^{Polypogoni}
 — ^{stella}
 — pallida
 — protensa
 — ^{Mortherii}
 — ^{Tungenmaniac}
 — ^{Caricina}
 — ^{Cyastionum}
 — ^{Alismatij}
 — ^{glauialis}
 — ^{Bistortae}

Philippiella atra. -
 - *nigella*
 - *purpurea*

Patellaria subvelata - *cyanea*
 - *ferruginea*
 - *atro-rivoluta* *sanguinea-atra* (Pm)
 - *nigro-rivoluta*
 - *caecula* + *caenangiicola* (Did.)
 - *olivacea-virens* +
 - *nigro-cinnabarina* + *tasmanica*
 - *flexella* = *Patrella* *Crataegi*
 - *virescens* +
 - *inclusa* +
 - *sanguinea* + *polytrichina*
 - *redicta* +
 - *melanophaea*
 - *dimorpha*
 - *formis* *Abbotiana?*
 - (Sol.) *cylindrospora* *virens?*
 - *nigrocyanea*
 - *signata*

Patella cyanea
 - *thecolus*
 - *stygia*
 - *viridella*
 - *pubica*
 - *gregaria*

Patinella gnaphalians
 - *stictina*
 - *appplanata*
 - *stipitata*
 - *hirnosa*
 - *olivacea*
 - *stictioides*
 - *viridi-rufa*
 - *violacea*
 - *hyalophaea*
 - *flexella*
 - *lythoidea*
 - *pallida*
 - *Adamsoni*
 - *arterisoides*

Pericoma Crataegi
 - *aterrima*
 - *byssacea*
 - *phyllophila*
 - *Carpini*
 - *cinnamomea*
 - *Rosae*
 - *rhabbarina*
 - *acericola*
 - *larvicola*
 - *saccharina*
 - *sublivonius*
 - *myrtillina*
 - *claviformis*
 - *lucida*
 - *minuta*

Phaeopezia Puiggarii
 - *marina*
 - *apiculata*
 - *murina*

Pislopeza flavida
 - *myrothecioides*
 - *nitrabilis*
 - *nummularia*
 - *Babingtonii*

Pisotalea veneta
 - *vetis*
 - *gallica*
 - *concolor*
 - *Bresadolae*
 - *erubescens*
 - *cumbicola*
 - *corvina*
 - *Hydrangeae*
 - *tentaculata*
 - *minatensis*

Pithya vulgaris
 - *lucida*
 - *cupressina*

Q
 R
 S
 T
 U
 V
 X
 Y

Peziza alutacea

- aurantia
- arcuata
- encyclus *atro-virescens*
- abretina *ascophanoides*
- adnata
- *sessilis amplata*
- aspericella
- asperior *Afzelii*
- arctica
- argentina (2) *affinis*
- aurantio-rubra
- araneosa (2)
- acuminata *apophyzata*
- adusta
- acetabulum
- arduennensis *Friesii*
- appplanata
- Asae
- armeniaca *furispora*
- auricula *Fuekelii*
- aphialyna *apophyzata*
- antarctica
- arenaria
- argentina (2) *Guelini*
- angelina
- axillaris *annopikala*
- bonariensis
- badia *Bongardii*
- borivensis
- bella *(bulgarioides)*
- biforia *brevipes*
- bronca *(brunnea)*
- brunnea-atra
- borina
- camina *(corrugata)*
- carpophila
- congrex cruenta
- carnea *crassa*
- *Criam* *castriuscula*
- coccinea *carnea (2)*
- cinerella
- calyciformis *cyaneus*
- constellata *cyathula*
- cinnabarina
- cupularis *cinereo-nigra*
- cerea *elypsata*
- cinnamomea *- lutescens*
- convexella *campylospora*
- cervaria
- catinoides *corallina*
- ciborium
- cacalobus *cruciata*
- chlorophaea *contigua*
- collopus
- concrescens *leucobasis*
- concinna *lividula*
- crenulata
- cremoricolor *luculenta*
- crustulum *Laksmauni*
- carbonigena
- Calyx *lactinubra*
- carbonaria
- Catinus
- cochleata *lenticicola*
- cervina
- convexula *calospora*
- cestrica *chlamydo-sporea*
- Chateri
- chrysoptthalma
- Camparella *costata*
- Craterella
- caligata
- crenata
- decolorans *depressa*
- domingensis
- difformis
- deformis
- domestica

Peziza dolosus

- delizata
- doratophora
- ditata
- difformis
- dochmida
- eclinospora
- epitricha *epichrysa*
- epixyla
- exidiformis
- emarginata
- exasperata
- euspora
- eclinosperma
- Franzosianum
- fumerata
- flavo-virescens
- ferruginea
- forcata
- fibrillata
- furfuracea
- fulgens *flavo-trigyna*
- fuliginosa
- grata
- geospora
- granulata
- griseo-rufa
- globosa
- globosera
- glumarum
- gallinacea
- gemmata
- gemma
- hematochloa
- haemastigma
- humosa
- hirscolordes
- Hartmanni *Hirnedley*
- harnoges
- heyeri *deca*
- hepatica *hydrophila*
- himulea
- isochroa
- irrorata
- intermixta
- Jagermannia
- jiristans
- isabellina
- inaequalis
- irina *ingrica*
- janthina
- indivisa
- Keithii *Knaiaceae*
- laeticolor *Kraskeana*
- limbata
- lechria
- lobata
- lepocarpa
- leucoboma
- luteo-pelleus
- luculentum
- lepida
- limbricalis
- lepidota
- leporina
- luteo-nitens
- lechithra
- Lancicula
- melastoma
- muresuroides
- Martini
- mellea
- meridiana
- *modesta* *melanocarpa*
- melaloma
- macrocalyx
- mixturae
- melana
- muralis
- Muelleri

- Periza microphylla* Messersmidii
- minutella macrochaeta
- muscorum majalis
- mitrula
- Periza membranacea*
- Periza macrocystis*
- mespiliformis
- Marshallianum
- microspora
- Maurilabreae
- macrospora
- nobilis
- nuda
- obnupta
- onotica
- olivacea-pallida
- Omphalodes
- Oocardi
- Olanus olivata
- olivacea ochracea
- ortotricha orbicularis
- perlata
- pocula
- pluralis
- Phillipsii
- palmicola protrata
- papillata
- plumbea Minipatoris
- pallidula
- pilifera Petaloidea
- pinetorum
- purpurascens Pedroti
- perforata
- phaeoloma Phillipsii
- pustulata
- Polytrocha Porceveli
- psilopezoides
- Patouillardii
- quisquiliarium
- Petersii Teurota
- phegoides
- petaloidea
- Piggotii purdica
- pleurophora
- quillotensis fitchii
- repanda
- Roumegueri
- Radula
- rapulum
- rubra
- Rehmiana
- rhytidia
- reticulata rhizomorpha
- rubricosa
- rubiginosa
- radiculosa
- ruberrima
- Rindi retinoides
- rheugna
- rutilans ripensis
- Riederi
- sibirica
- Schulzeri (2) Sarajini
- subaurantia sphagni
- Sydowii
- sibiricola
- scutigera
- sparsico-atra Schroeterii
- sepiatra
- sepiatella sepulta subcupularis
- sibirica
- sordescens sibiricola
- suberemulata subvermali
- subvesiculata
- sulcata Sowerbei
- succosa
- Sullivanii Anisigmatizans
- subviridula
- saurosa sphaerophoroides
- sarmentorum sibirica
- spongiosa
- sulphureata Stellerii
- Schenkii subrepanda

- Periza Sowerbiji*
- Periza spissa*
- tenuissimosa
- rugospora
- saluovi color
- septimum
- sepulchralis
- sauridiana
- sereta
- Trachycarpa
- tineturella
- thelephora
- tenaxella
- tectoria
- Thozetii
- Thiermannii
- tuberculosa
- Targetta
- tetrastroma
- turbata
- uncinata
- umbilicata
- umbrosa Urnula
- undata
- uliginosa umbrina
- ustorum
- viridens
- valenzueliana
- varia
- Wrightii violaceo-brunnea
- vacuola
- vesiculosa
- violaceo-nigra
- violacea
- venosa
- viridaria
- Warnesii
- violaceum
- verruculosa
- virid-ata
- virida
- verrucosa
- vulcanalis
- xanthomela
- xanthospora

Phillipsia chemmesma

- polyporoides
- subpurpurea

Q
R
S
T
U
V

Pseudophanidium
Netul.

L

quadratum Cl. 79
quercina Cl. 102

Ryparobius Pelletieri
 — niveus
 — Cookii
 — crinitaceus
 — Casati
 — dubius
 — polyponus
 — taracolooides
 — Winteri
 — dubius
 — Asteriscus
 — padycanus
 — monocanus

Rhytipnea velatum — ~~sparsum~~
 — nitid + — lineare
 — Vaccinii
 — Ulmi
 — spurcarium
 — sparsum (Bot. Gaz. 79 p. 171 col. 16)
 — solidagine +
 — Guilgai
 — Urticae — *Bistortae*
 — Totum
 — talicinum
 — rufulum
 — Rhododendri
 — Rubiae
 — punctatum
 — punctatum
 — potentillae
 — Pruni
 — Bongamiae
 — placenta
 — Onobrychis
 — Myricae
 — Montiniae
 — monogramme
 — micraspis
 — Nelianthi
 — maximum
 — maculatum
 — maculans
 — grexiae numero 2
 — porigo
 — erythrosporum numero 3
 — leptospilum
 — laciniatum
 — Thalictricola +
 — Thalictri - Canadensis +
 — juncicolum
 — hysteroidei
 — glyostum
 — Filicinum
 — decolorans +
 — Curtisi
 — corrugatum
 — constellatum
 — confluent
 — concentricum
 — Berkeleyanum
 — Boukiinae
 — australe
 — Austini
 — Astensis
 — atramentarium
 — Atrocaryi
 — arbuti
 — andromedae
 — acerinum
 — decolorans
 — Liviodendri
 — giganteum
 — minutulum +
 — betulinum +
 — lineare

R
 S
 T
 U
 V
 X

Roeslevia pallida
- *oxygordes*

Ravenelula gainefrillensis
- ^{Soto}
- *nigro-capitata*

Rhizina Thwaiteri

- *spongiosa*
- *vaporaria*
- *feruginea*
- *reticulata*
- *laevigata*
- *helvetica*
- *undulata*

repandum R. 70

Rubi C. 81

Rhododendri B. 95

Rubi B. 96

ingodum B. 96

Rhododendri Cl. 104

rhombicum Cl. 106

Rhainii Got. 112

rubella N. 139 -

rotella N. 146

rubella Pr. 149

Rotae Pr. 149

rhodoleuca Pr. 150

rubridula Pr. 151

radiata St. 176

rotacea St. 176

rotundum O. 189

raphidogarum O. 207

Spathularia rufa
— *clavata*
— *velutipes*
— *entipata*

Saccobolus Depauperatus
— *Hansenianus*
— *verticolar*
— *neglectus*
— *obscurus*
— *violaceus*
— *Boudierii*

Seledodermis *amphibolorides*
— *amphibola*
— *baeilliferae*
— *sequoiae*
— *pithyrum*
— *frangulae*
— *acerina*
— *fuliginosum*
— *seriatum*
— *concinnum*
— *ribesia*
— *vermicularis*
— *elliptica*
— *mutata*
— *torbi*
— *Xyloctei*
— *eucalypti*
— *pallidula*
— *funicola*
— *Houghtonii*
— *crypta*
— *sepiaria*

Stannaria Percooni
— *hyalopus*

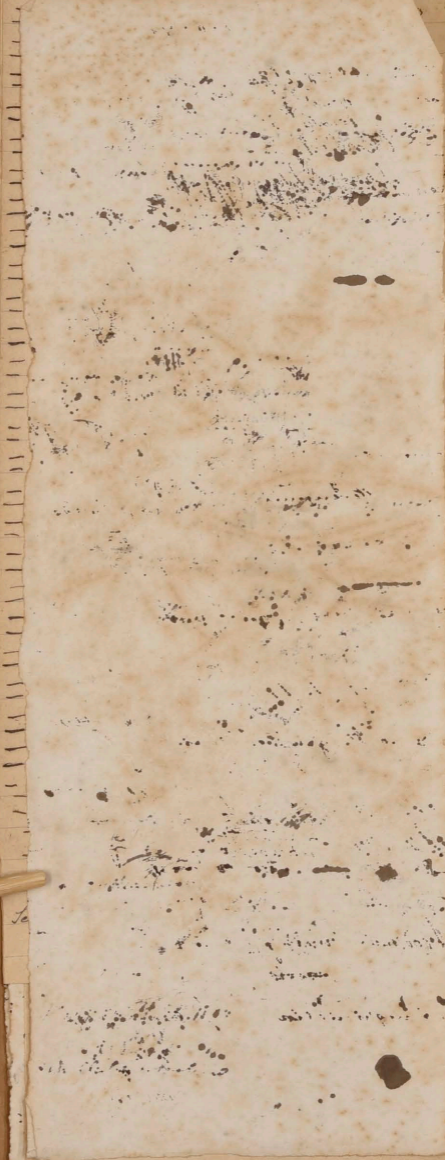
Sphinctrina *tubinata*
— *tyllan*
— *microtopica*
— *gummae*
— *cubensis*
— *nitida*
— *coronoides*
— *Pini*
— *nexuata*
— *baculospora*

S
T
U
V
X

Stictis	annulata	
-	bella	
-	grisea	salicinum Rh. 67
-	pusilla	locia Sph. 73
-	Lichenoides	
-	monilifera	sparsum Kyt. 83
-	Megarhizae	
-	Araucariae	salicinum Rh. 84
-	pachyspora	
-	Cladoniae	tripitum Polyst. 86
-	elevata	
-	decepiens	sphaeroides Dot. 109
-	thelotremaoides	
-	thelotrema	torbi Dot. 110
-	tenuis	
-	stigma	salicis Fr. 132
-	Utricicola	
-	Lesleriae	substricta N. 146
-	Carsthamni	
-	rhodoleuca	seriata N. 147
-	saccardi	
-	radiata	saligna Pr. 149
-	polycocca	
-	insculpta	epilomatra X 157
-	punctiformis	
-	quercina	subvelata St. 156
-	quadrifida	
-	papula	sticticum X 169
-	pelvicula	
-	ollan	striola X 170
-	nigrella	
-	minima	sulphurea St. 177
-	muscularis	
-	durulae	Carsthamni St. 178
-	haemisphaerica	
-	Carsthamni	
-	hydrangeae	stellata St. 178
-	graminum	
-	glaucoma	Lesleriae St. 179
-	folicola	
-	fimbriata	Carsthamni Sch. 183
-	filicina	
-	coccinea	lepincola Sch. 184
-	bullata	
-	betuli	Schizoxylon Sch. 184
-	arundinacea	
-	anaxaea	sphaeralis L. 188
-	acidiformis	
-	crustaceus	sphaerocephalum O. 189
-	spartey	
-	torbi	salignum Fr. 196
-	alicutaria	
-	lupini	leucopyxii St. 202
-	Tsongbe	
-	pusillata	
-	decidua	

Schizoxylum	occidentale
-	stellata
-	lepincola
-	Lichenoides
-	immersum
-	Taei
-	homosporum
-	Berkalegium
-	vaginatum
-	albo-atrum
-	aeruginosum
-	moniliferum
-	argentum

Stictis annulata



Hagia *laevis*
- *dipolaris*
- *humilis*
- *arundinaceum*

Larea *difformis*
- *complanata*
- *Pinna*

Sphaeroperia *alpina*

Sclerotinia *homocarpa* - *incondita*
- *tuba*
- *tuberosa*
- *ciborioides*
- *Zueckeliana*
- *hiemalis*
- *oreophila*
- *Pruni-spinosae* *Kaufmanniana*
- *sclerotiorum*
- *Candolleana* *baccarum*
- *ovata*
- *gracilipes*
- *Curreyana*
- *Liberthana*
- *Kemeri*
- *maurula*
- *firma*
- *bulborum*
- *adusta*

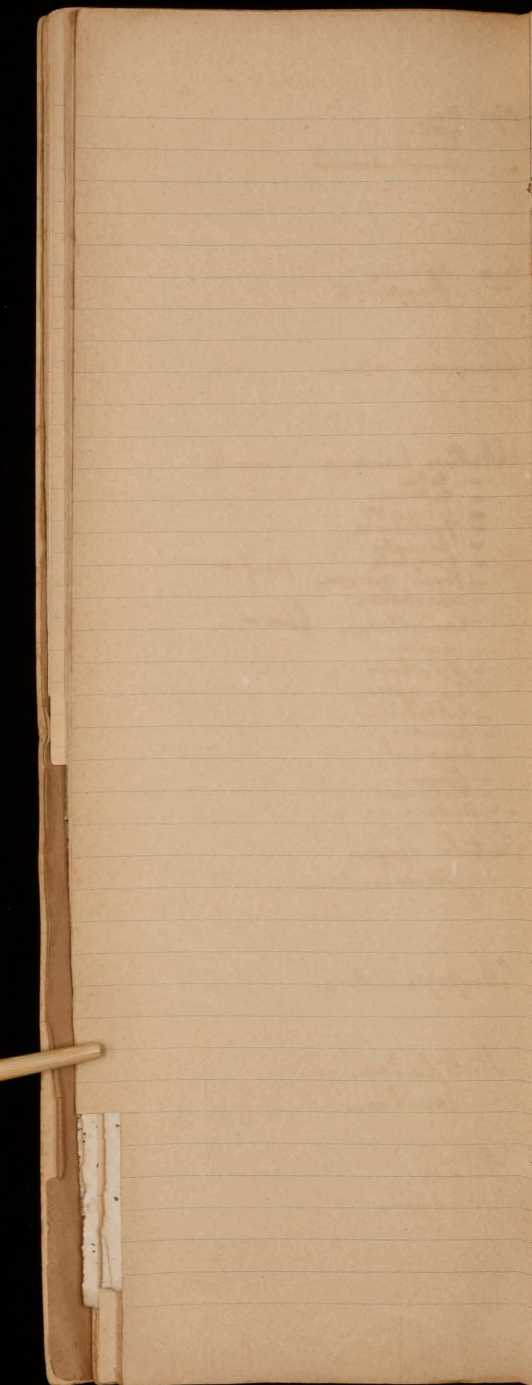
Scutula *epigyna*
- *stereocaulorum*

Solenopezza *solensa*

Stictophaedium
caridicum

Stannaria
hyali

T
U
V
X



Tympanis alnea
 - cuneusariae
 - fasciculata
 - Fraxini
 - conspersum
 - antactica
 - juniperinum
 - Pinasti
 - pithyrum
 - mutatum
 - saligna
 - Ligusti
 - populinum
 - pulveraceum
 - Lyringae
 - Polyporum
 - tuberculata +
 - Oleatri (Dict.)
 - nemopanthis (Sal.)

Trochila Trini +
 - phaeidioides
 - studromedae
 - Taxi
 - salicij
 - puccinioides
 - Populorum
 - pruinula
 - perexigua
 - petiolicola petiolaris
 - turanagolua +
 - Oxycocci +
 - plantaginea parasitica
 - rufilla
 - minutissima
 - mayrpora
 - atropurpurea Conioides
 - lauroclasi
 - ignobilis
 - Winteri
 - fufella +
 - Ebuli +
 - Epilobii +
 - diminiens
 - rubella
 - Craterium
 - Buxi
 - aevuginosa
 - (Trifolii +
 - ruficicola +
 - pteridina +
 - perexigua +
 - leucostoma +
 - diminiens +
 - calamicola +
 - ligui +
 - graminif +
 - complicata +
 - cinerea
 - juncicola
 - Saniculae
 - Stellariae
 - exigua
 - substricta

Tromera Resinae

- afformis
 - olivell

T
 U
 V
 XV

Vapezia erythro

- *herpistricha*
- *tela*
- *scariosa*
- *pruinata*
- *sanguinea*
- *Johulstoni*
- *lateritia*
- *Rosae*
- *varicolor*
- *Bloxami*
- *melanurey*
- *mollisoides*
- *aurea*
- *candido-fulva*
- *fulva*
- *fulvotincta*
- *Charetiae*
- *erratica*
- *corui*
- *caesia*
- *eribasis*
- *Kneiffii*
- *minutissima*
- *deijjies*
- *ulcitrilla*
- *ruborum*
- *bicolor*
- *conspersa*
- *atro-fulva*
- *heteromorphia*
- *prunicola*
- *bysinosa*
- *bysina*
- *Prunorum*
- *cinerella*
- *atro-sanguinea*
- *Torulae*
- *Rosae*
- *umbrosa*
- *prolifera*
- *carina*
- *cornuta*
- *phlegmacea*
- *balsamicola*

apocrypha

metaleuca (vide Mollipia)

Rehmiana

Taxi Pr. 72

Frigorum C. 78

humidum Gylt. 78

Tini Tr. 130

parallela

tithymalina N. 139

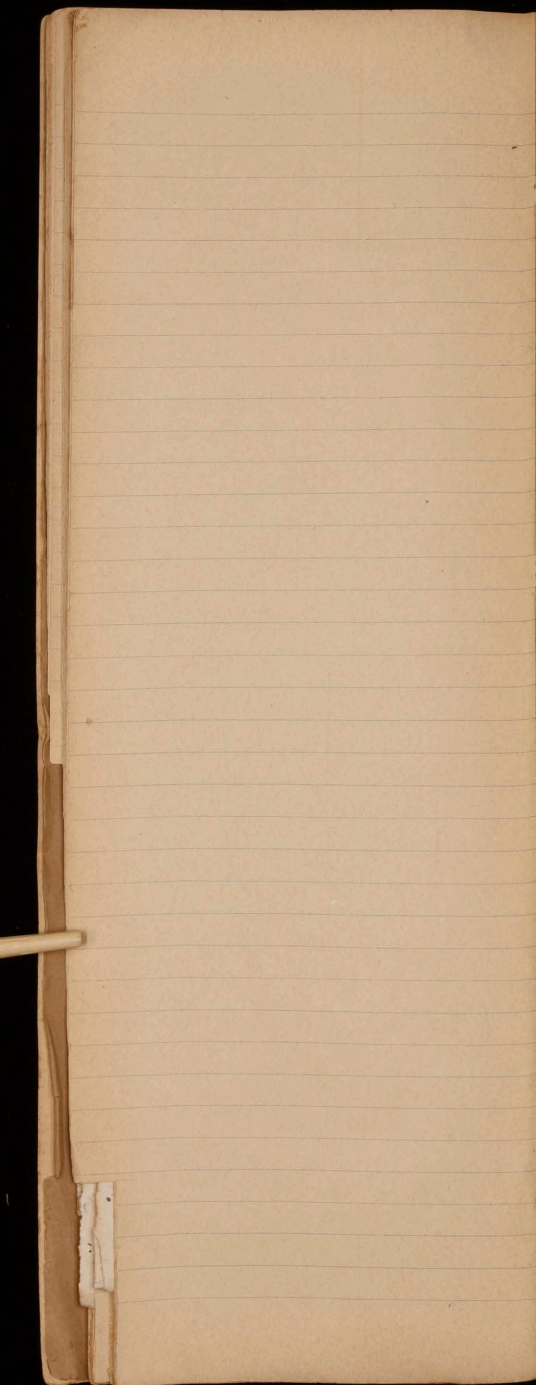
Trollii Wettstein N. 139

Toffeldiae N. 141

fransvetalij Pr. 149

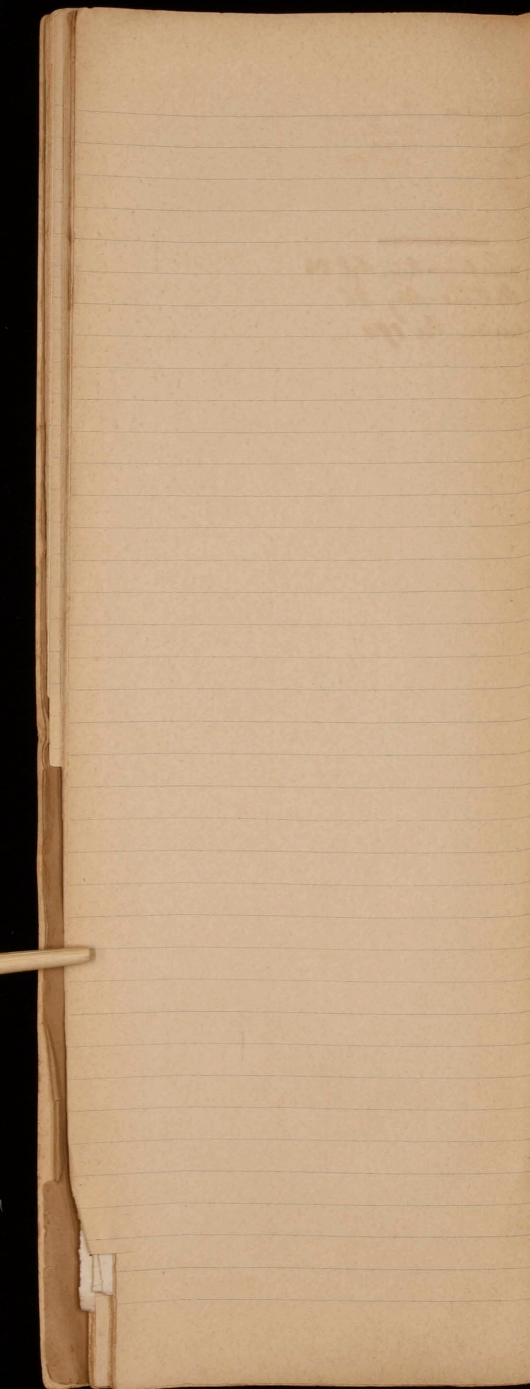
Taxi X 171

V
V
XV

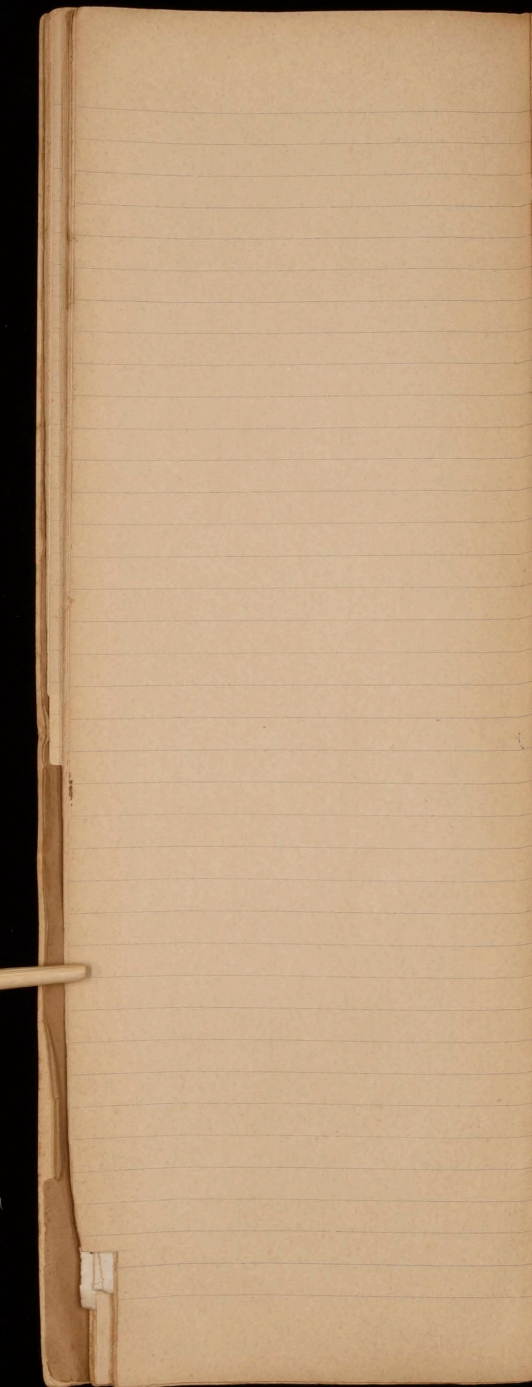


Uvula Craterium
- Hartii
- minor
- rhytidea

umbonatum Nyl. 84
Urticae Rhy. 86
urica Br. 190



V
XV

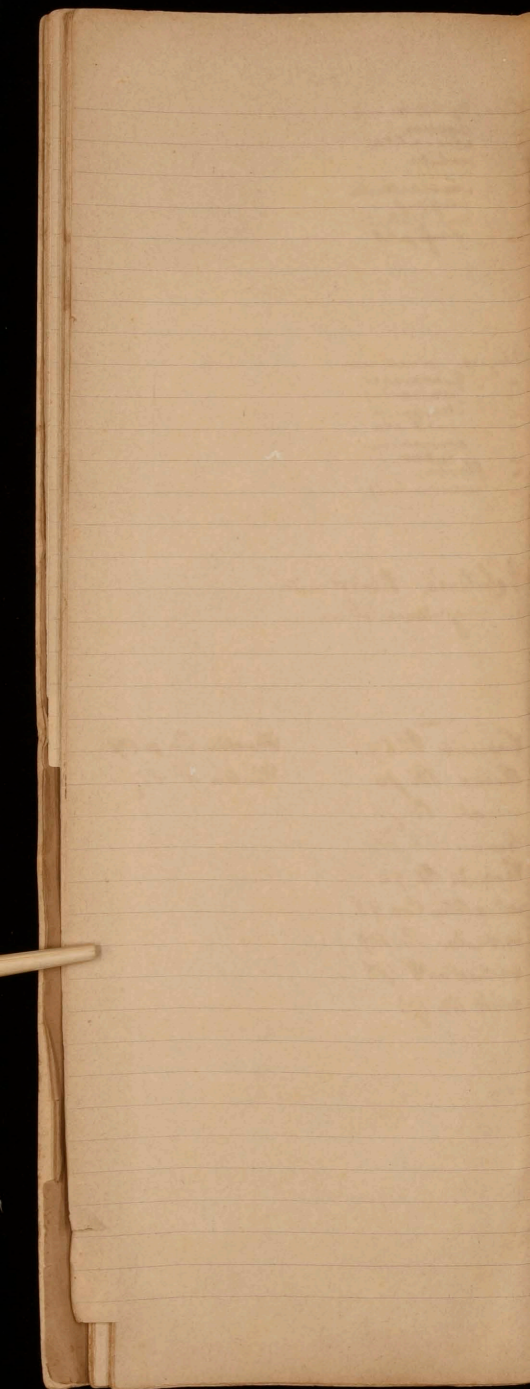


- Verpa digitaliformis*
- *spaciosa*
- *atro-alba*
- *patula*
- *conica*
- *Morchellula*
- *rufipes*
- *Krombholzii*
- *rufipes*

- Peziza rimarium*
- *Guernisae*
- *perizonides*
- *Margarita*
- *unctuosa*
- *Furcorum*
- *lutea*
- *flavipes*
- *vermicularis*

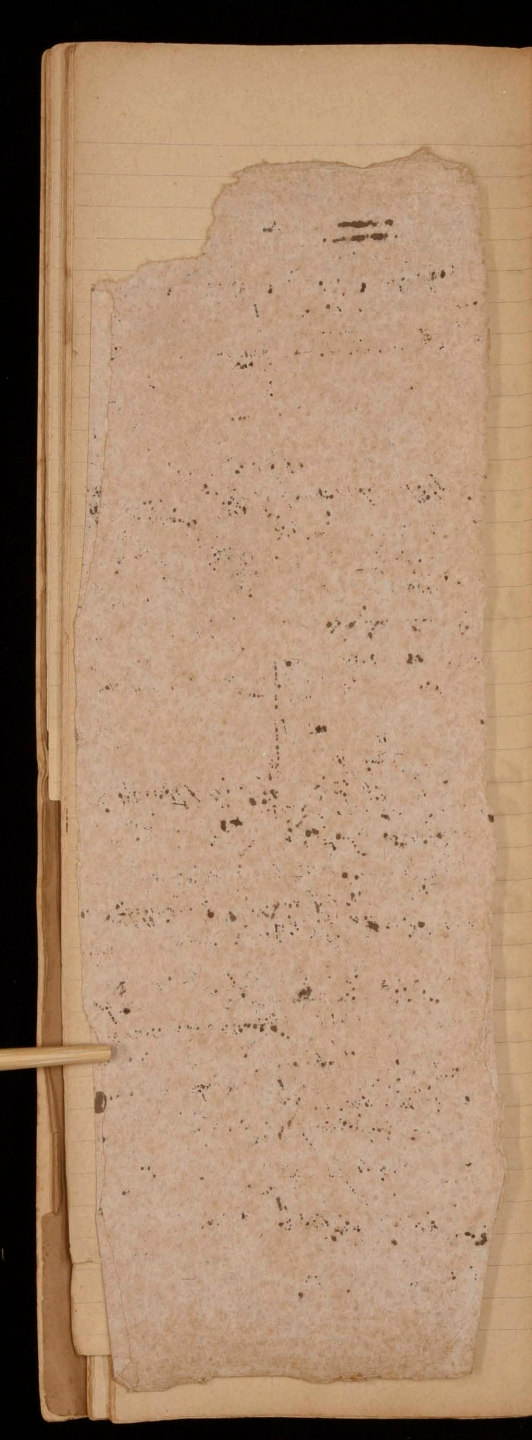
- Volutaria Rhododendri*
- *griseo-vitellina*

- | | |
|--------------------------|----------------------------|
| <i>Vaccinii</i> Ph. 69 | <i>Wauchii</i> Cr. p. 102- |
| <i>Puceae</i> Ph. 70 | <i>Winteri</i> A. 157 |
| <i>vernale</i> Ph. 70 | |
| <i>Vaccinii</i> Sph. 74 | |
| <i>Vaccinii</i> Ph. 94 | |
| <i>salvatum</i> Coe. 98 | |
| <i>reticolor</i> Pr. 149 | |
| <i>reticolor</i> M. 173 | |
| <i>nivide</i> M. 173 | |



Xylographa virescens
ibetica
ipilomatia

erica



- Xylographa virens
- ibetica
- epilomatia
- pitularis
- parallela
- caulineola
- haemisthaenia
- linearis
- lasiocola
- flexella
- atrocyanea
- astricta

Xylothei Got 111
 Xantholeuca Sch. 182

