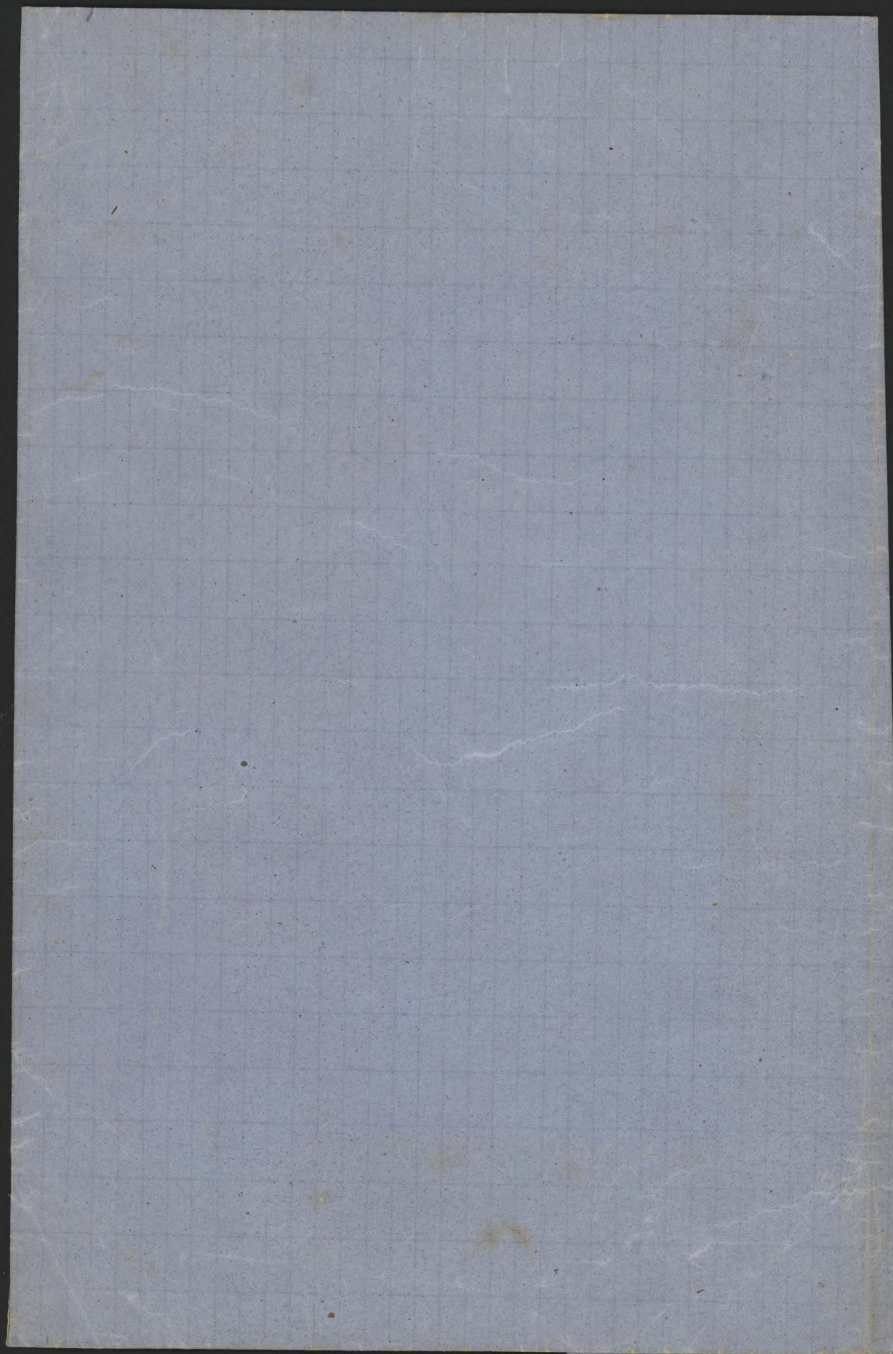


Dignone v. ilone servanda

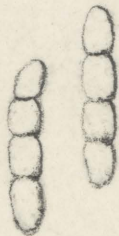
12



17/

Sporormia intermedia Auer
— *rupicapra* Ces.
— *Steinbeka* DeNot.
2 alpe *Steinbeka*, in fruo
autlopij *rupicaprae*

40=7



400



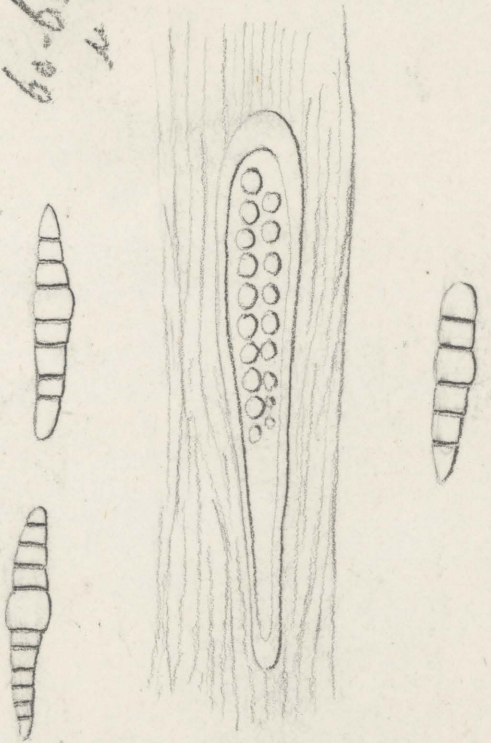
400



8/

60-80
x long

200



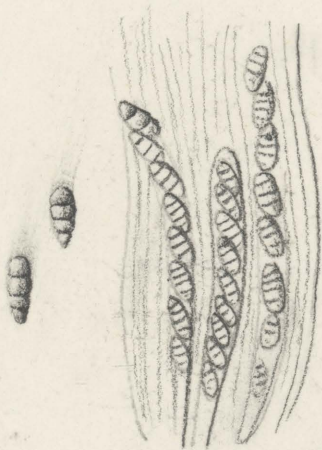
10 diam.

Trematophora callispora (D. Mot.) Nau.
 2 fragments Guerin. 1. in D. Mot.

6/

Melanomma cubonianum
Saw.

400



20

In cav. Acer camp. Val. Intra. 2000

On dead wood

T.

pur

Sporidia 883 inch

Zignoella

Aschi 72-75 x 8-11



spor. 21-27 x 5-6 ^{scolovate} ~~setine~~, gran-
lose; contents v. piñ d. rado, 1-3 septate

Iphia (*caespitosae*) Archeri (Berk.); Ann. II. 280

conferta, peritheciis rugosis tandem collabendo patercefornibus, sporidiis elongatis curvis quadrinucleatis.

Hab. On dead wood, Archer.

Densely crowded. Perithecia autonomous, rugulose, at length by collapsing saucer-shaped. Asci clavate. Sporidia biserial to elongated, curved, quadrinucleate, $\frac{1}{8}$ inch long. This species at first sight looks very like *I. phaeostroma*, but there are no hairs, and the sporidia are different.



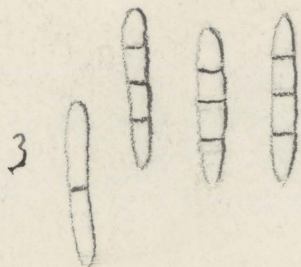
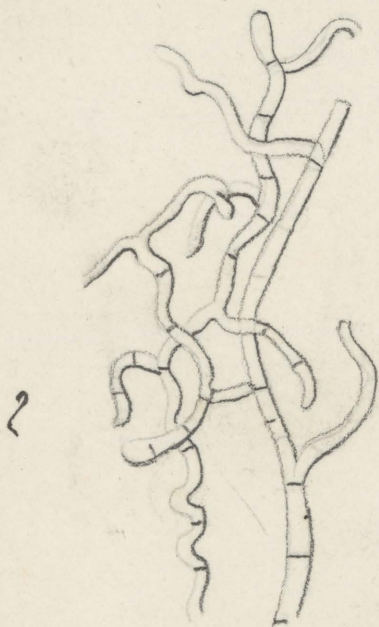
Floricum
Linden

Specimen in
Herb. Berol.
nulla

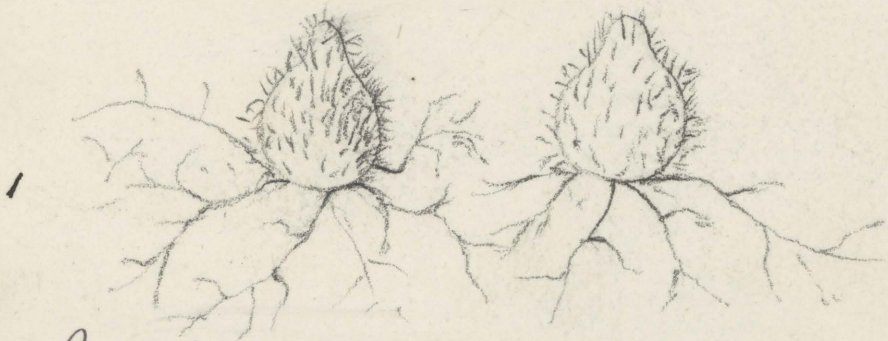
4/

Lariophloeus muscicola
De Not.

in *Brachythecio* in alpe
Zebm (Anzi)



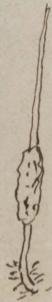
36-38 = 6



- 1 *Cyrtocarpus* 20 v.
- 2 filamenta mycelii 400 v.
- 3 sporidia 400 v.

Eurygaster integriceps
on larvae - South Carolina names.

Stem $\frac{1}{2}$ - $\frac{3}{4}$ inch long $\frac{1}{4}$ line thick.



Cordyces americana D. et Curt. South Carolina. N. Amer.
on excrement of birds

Stem $\frac{1}{3}$ inch long, sometimes twisted, paler
than the head. Caputulum subhemispherical
and rough with the ostiola. Ascii elongated,
apex swollen, sporidia linear (?) immature



Nov. 20 1876

on larvae . South Carolina N America

Stem 3 in. long $\frac{1}{2}$ line thick - brown below
and tomentose, smooth above, tan, grooved
when dry. . Capitulum $\frac{3}{4}$ inch long. cylindrical
brown, barren above and acuminate. Asci
very long flexuous. Spores linear, breaking
up into truncate joints, '005 mm long'. Berk

C. aculeatum Rav
= *C. carolinense* Rav

on moist putrid logs. South Carolina N America

1-2 inches high, dull brownish purple, or flesh
colour. Stems about twice as long as clavate
head



but scarcely so thick. Sporidia
articulations minute 0.012 mm diam

Cor. palustris Berk et Br.

90510



28-30

6-5

hyd. flant

Montauquette

(Dobson)

Helioptis. 1st

ex. cant. det. Strunz

Newfield N.Y.

Decr. 682

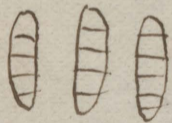
Mr Heligson

Dear Mother
in appearance?

Phyllis Leighton, Tenn

Fig. 15

ad corticis



$\frac{20-25}{}$

$6\frac{1}{2}\phi$

Sporidia $\frac{1}{1000}$ in

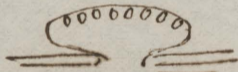
Glauca

polythela

On bark

Belongs to Hypocrea,
sight Sphaeria rufa

resembling at first



distinctly Hypocrea ^{semisabj} no fruit

160-165
= 7

1850 = h

Ophiodesley atra
mentani

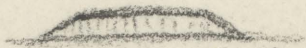
10/



200



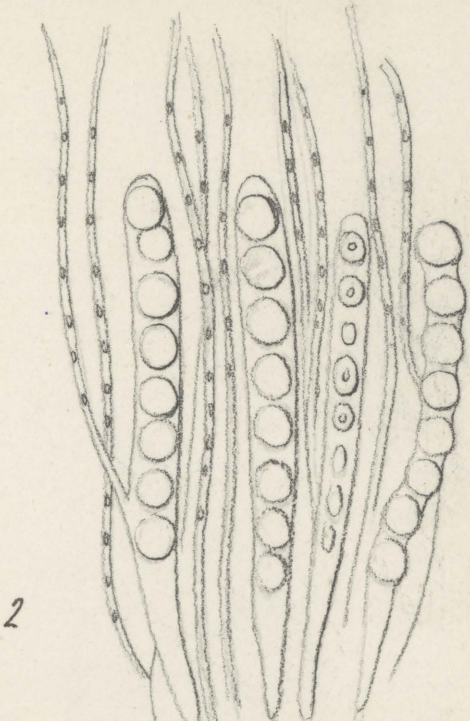
100 volte



20 volte

1/

sporidii di
H. nummulariana



Nummularia discreta Tul.
Nummularia Cesatii Leher
 in cultura Labrousse - Audouin



1 concettacoli interi e tagliati nel mezzo 8 volte
 circa maggiori del vero

2 Asci, paraf. sporidii a 400 diam.

caerentia n. 343
sullo sterco di pecora
var. mejudice n. 5

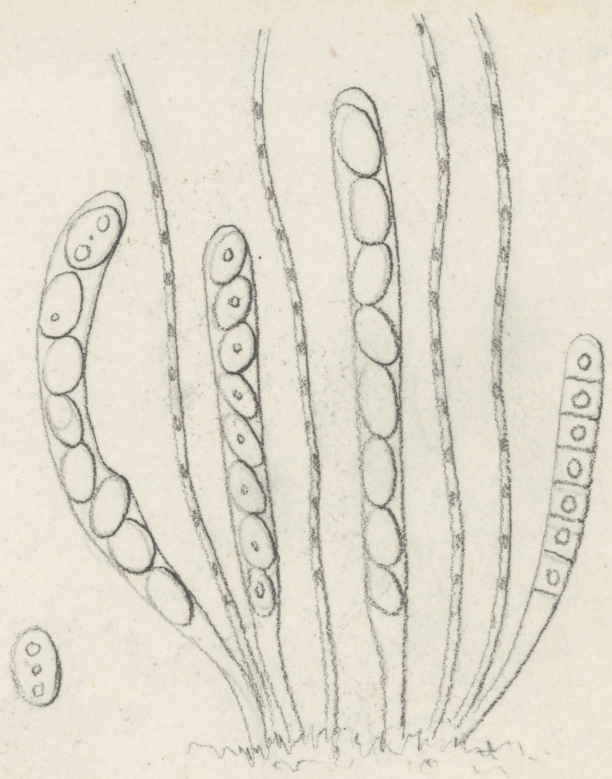




20 v.

Cryptosphaera Bobbingtonii
 in various laminae

500 -



20 -

Anthracella Picuriana
 in saucis Capo d'Uoli.

9/

D. gymnocarpi Donacina (Kiehl)

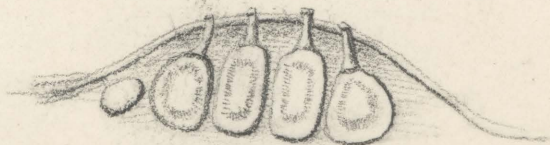
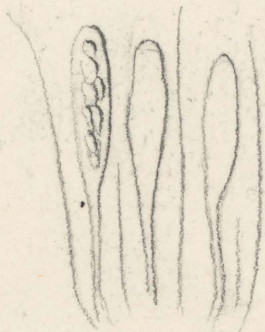
Syll. F. 711 ^{tab}

v. *Leptopt. arundinacea*

immela

16 μ long

100



Arundo Phragmites
Fraxin

100

9 Homostegia Didymosphonia Donacina (Mozl)
Aphaeria arundinacea Sowerby?

Sull' Arundo Obragmites alla Capanna di
Bersolino presso Faenza, Calderi 1863

Gyrenia seriata, in unaque serie numero varia,
insculpta, pustularum elongatarum ad instar
protuberantia, stomate peridermide ducto
cubilia subeunte excepta, tenuiora, rotundato
angulato contigua vertice in obtusulum apice
punctiforme emergens producta.

Asci peripherici copiosissimi e basi tenuata
clavati 8-spori! Paraphyses filiformes sporidia
juniora, obtuse late seroto-funoida, hyalina
mucis 4-facta, matura bitubaria ad difeji-
mentum nonnihil contracta, recta vel tenuissime
curvata, badia 1 articulis laeviter truncatis
obtusum 2-tubaribus, 16 μ longis

conceptaculis haud perfect. signatis (?) cum
cubilibus fere confusis ad Homostegia recedit
sed affinitas cum his speciebus haud dubia
mihi videtur.

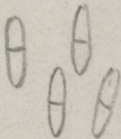
Erysiphe densa B. F. NZ. II. 208

Bifrons. mycelio denso arachnoideo,
persistente, sporangiiis mediis globosis
sparsis, appendiculis flexuosis, candidis
intertextis obovatis brevibus, sporidiis
ellipticis suboctonis - tab. CVI. fig 16

On leaves of Aristolelia



Lizunia fragilis



16-25 μ long.

Diatrype microplaca



spor. 5-6 x 3,5-4 brunneo-olivaceae

aschi 36-50 x 4-5

* **Diatrype microplaca.** B. & C. Journ. Linn. Soc. x. p. 386.—
Car. Inf. No. 2007. On *Laurus Sassafras*. Ravenel. No. 752.
Cuba.

Crispin
a - 110 - 120
15

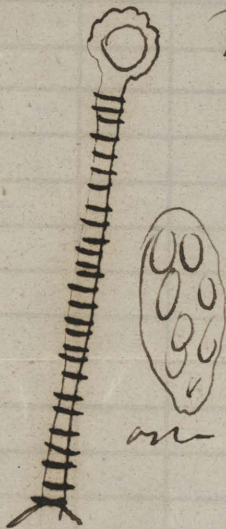
$\frac{1}{2} \cdot 30 = 15$
calc. 18 = 1



Part 26
cit. 1167.

Pisc
myst.





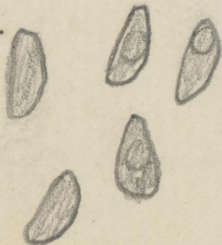
Thamnomys
annulipes Mat

asphondylia

per. ovum

00 yellow

Fr.
2673



aschi 72-75 x

5-6

spore 7-8 x 3-4



! *Hypoxylon epiphloeum*

Mass. glauc. New Jersey

B x C.

Capnodium Thwaitesii
Zubis. Berk



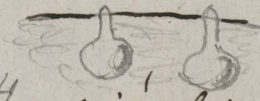
Diap. ^{Sup.} sinigrata Wint.
K. F. sel. exs. n. 354
et 355



aschi: 46-50 = 6-7



spor. 8-10 = 3, 6-4



mejerally

linea nigra interior virulata



hyp. nigra

Hab. in card. and. Angelica
et Junc.

pro Zurich Helvetiae

(24 pp.)
Diaplothe Fuchelii Kze



Sp. 11-13 x 3,5-4,5
ialine



pendar. deury
~~pendar. deury~~
deure gregan

aschi deupamente stipati, e rotati per
loro, di modo che non lasciano separare
rifolare in unipar.

5 rami ant. proce uluigi Erben
Semen

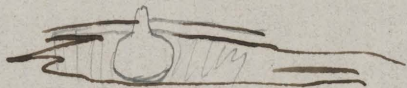
(Eur.)
Dipodkha Faberi Kze F. bl.
exl. n. 266



aschi 40-45 \times 7-8

spor. 9-10 \times 3-3.5

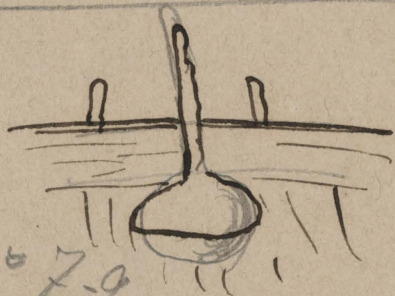
perithecia laxiseptis-
matis sept. demum



ad anal. anal. hermiti bthf.
cum candidis st. spongy
pr Freiburg Germania

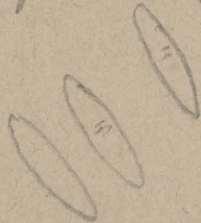
^{Sup.}
Käpöle Winterkling

(Pseudoglyphis!))



asci 42-46 \times 7-9

Spore 10 \times 3,5



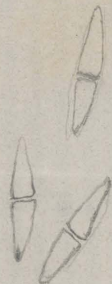
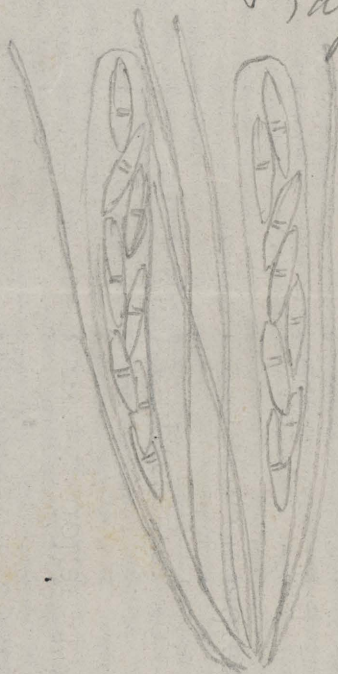
metr. sup. nigif.

bu. strom. obrot

As cart. and. Ononis
repects Zürich, Helvet.
Wate.

Scler.
(Falk.)
Diap. difficilis

Kunze
F. Sel. n. 352

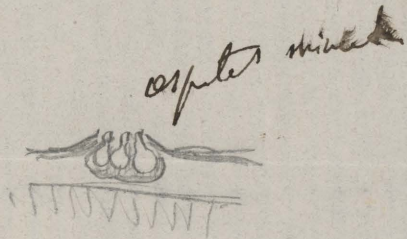


sp. 20-22 = 5-6

asc. 90-110 = 10-14

paraf. numeros. filif.

Hab. in ramulis *Prunus spinosa* pr.
Türich Helv.



aspera micula



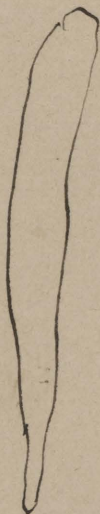
15-18

4 hyl ablu



20-80

10

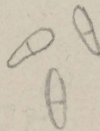
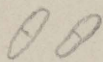


190

Shorella
Winters-Kay

Handwritten notes on the right side of the page, including a signature and other illegible text.

Sphaerella affinis Kunze



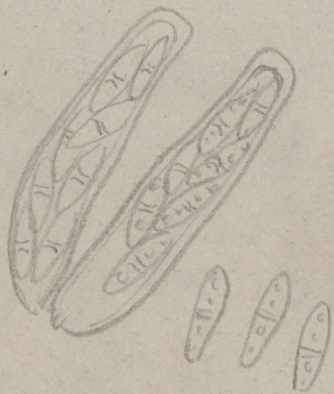
Spor. 5-6 x 3-3.5

Aschi 28-32 x 7-8

Perithecia 90-108 diam.

Perithecia, context by parenchyma.

Sphaerella fagedioridii Wint.
f. *Diplaci*



aschi = 40-42 x 6-8

spore 10,8-12 x 4

didime, quadriguttulate

Peritheo sferico, depresso
108 diam.

nerastro, context. parench.

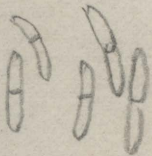
Artemia tuberculata Berk
on leaves of Metrosideros argus

Sporidia $\frac{1}{1750}$ inch long 14-15

$$\begin{array}{r} 25000 \\ = 9500 \\ = 5000 \end{array} \frac{1750}{14}$$



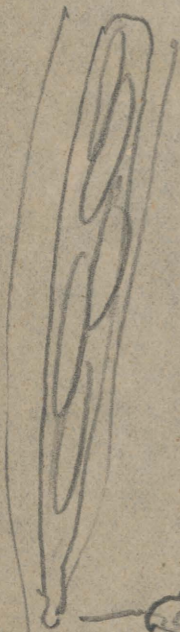
Lizonia pullulans



16-17 μ long.

90-100

10



50-60

5 1/2 - 6
Mil. stream

1/2 in

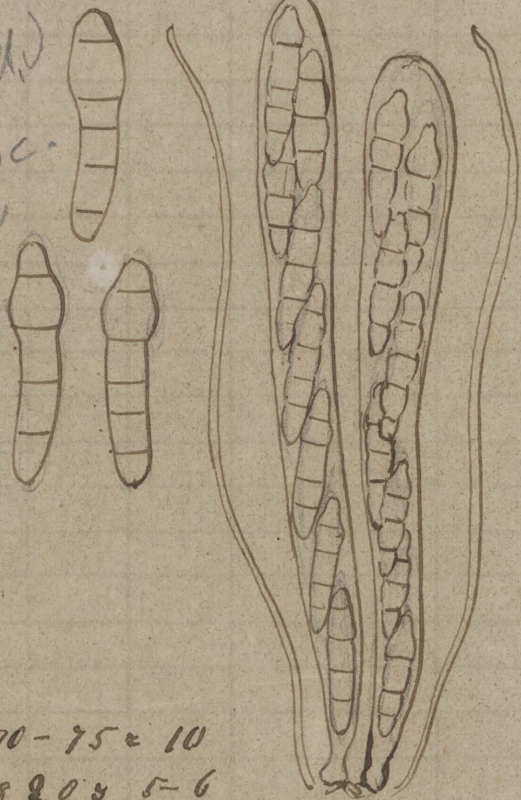


Leph

Cylindrus

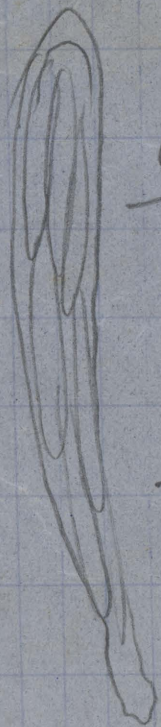
awn of Niess
wb

coll. J
L. calami
ohi



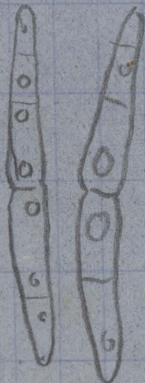
asci 70-75 x 10
sp. 1820 x 5-6

~~L. calami~~
epicalamii
L. calami

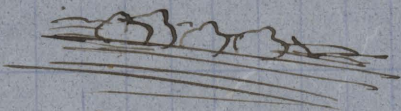


$$\begin{array}{r} 140-150 \\ \hline 16 \end{array}$$

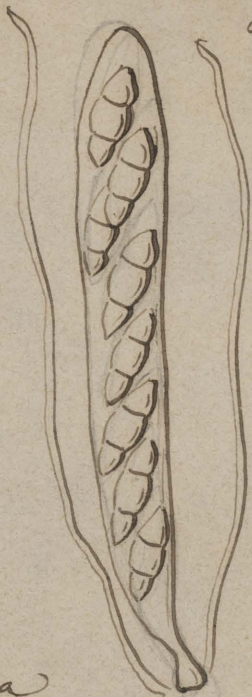
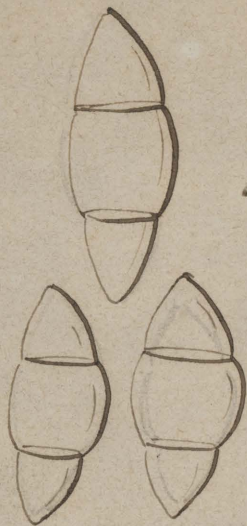
$$\begin{array}{r} 50.52 \\ \hline 6 \end{array}$$



3. rare 5 Sept
not clear.



Lept. conferta Nixon
in caule *Farehica* Brinn.



L. ocellata

1. caul. Hyperic.
p. fruct. in Helvetia
(Winters.)

7075. & 10-11

9-10 & 5-6

sp. hyalina

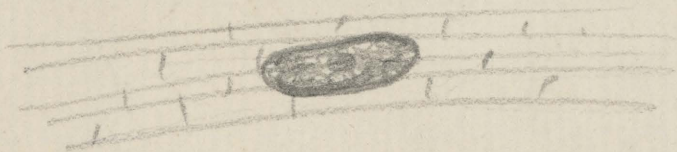
Cordyceps Ravenelii P. at Cynth
On larvae of Ancylonychia or Rhizotrogus
South Carolina N America

Stem, 2 inches, or more, long, at first
minutely tomentose, at length smooth.
Capitulum $\frac{3}{4}$ inch long. Perithecia
ovate. Asci very long - Sporidia filiform
breaking up into joints .0025 mm long



Pleospora asphodeli Rabh.
in *Ann. it. crypt.* 1866. n.º XII. F. S. n.º 2659.

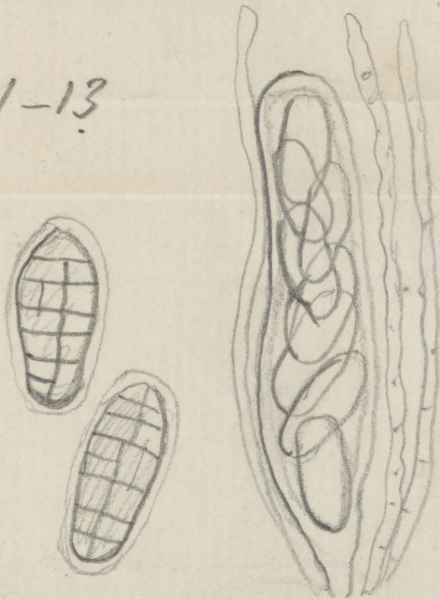
Periteci = $360 \times 140-150$.



Asci = $108-120 \times 21-25$

Spore $25-28 \times 11-13$
fulig.

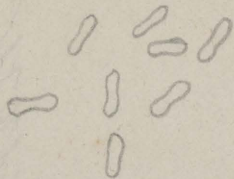
In caul. *Asphodeli*
lutesc., in *Sardina*
(*Marcucci*)



Phyllosticta ortensiorum Sacc
Sphaeria uncinata Aum. ex J.

= Phyllosticta sp.?

1 ex 1/4
Aus }
Lipia.



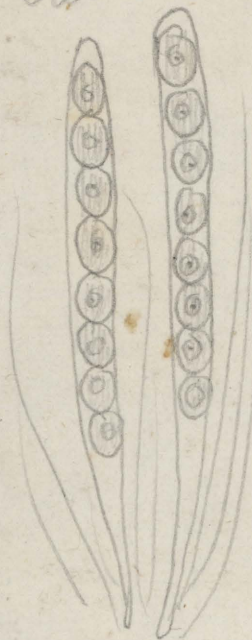
spor. ialine, eguttulate,
ripette nel mezzo, simili al
Bacterium termo.

2,5-3 x 0,5-1.

Orkula
Variolaria

3

6-8 x 6



ferrug. fusca
episp. cartilag.
nuc. obscur.
nucleo-ent. v. ind.

Sph. Variolariae Maff.
ex thall. var. commun

Pan Pan

110-115

18
infusibilis



22-24
10-12

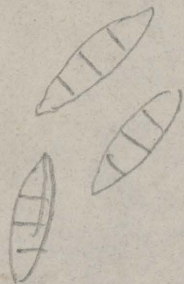
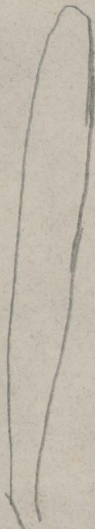


ant



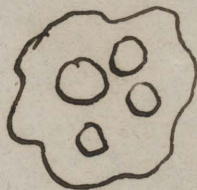
Plenpus hiehorbo
2. cant. Chaud de meta Pan

~~Clavaria~~ ^(fibr.) Zopfia Kunze



spor. 8-10 = 3-3,5

aschi 57-60 = 7-9



same as at

H. de. pseudogyl.
E. de. Simeone



comp. in wood
at Metanord

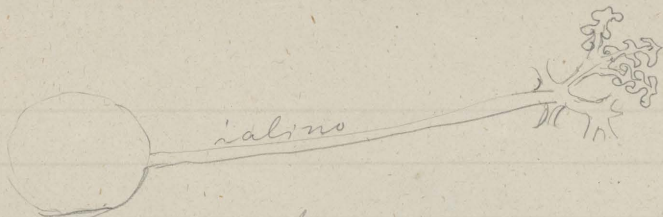
Sphaerella Rantagynis Sollen.

Perit. spherici, 90 μ diam.



sp.

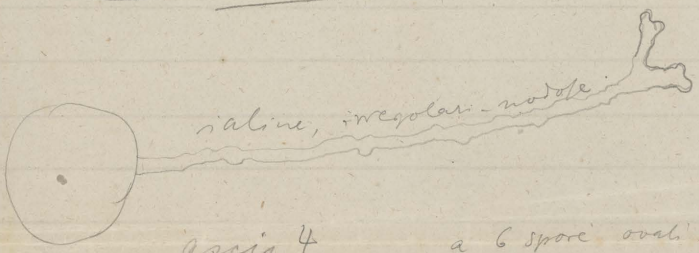




Micr. ex lense

Arthrospora, rhyz. acidi!

Micr. Euphorbiae



ascis 4

a 6 spore oval-elliptic, ialino

ascis = 54-60 x 28-30



spore 12-14 x 8-9

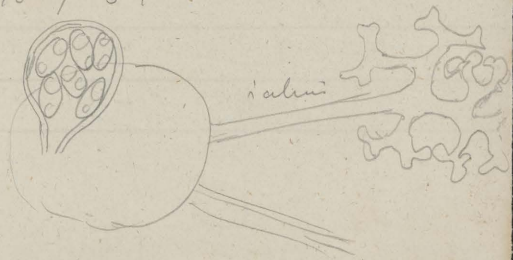
Micr. pulchra

sporis 6-8 elliptic, ialino, guttulat.

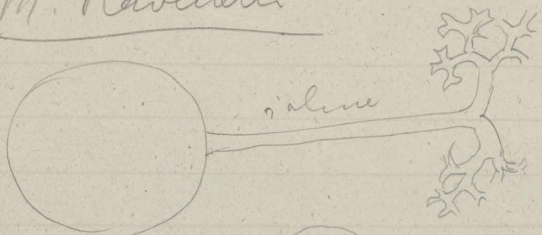
18-19 x 8-10

ascis globulosis.

50 x 40



M. Ravenelii



ascis 4-5



8-spore

spore 18-20 x 10,8

M. Ruffellii



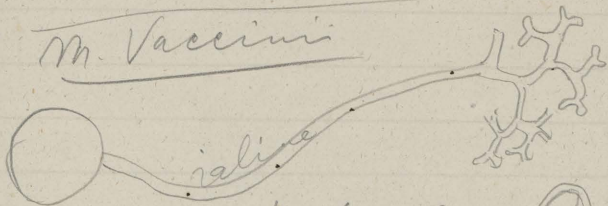
basis guallognola

ascis 4-5, ophaeroidis 46-48 diam.



6 spore elliptico 15-17 x 10

M. Vaccinii

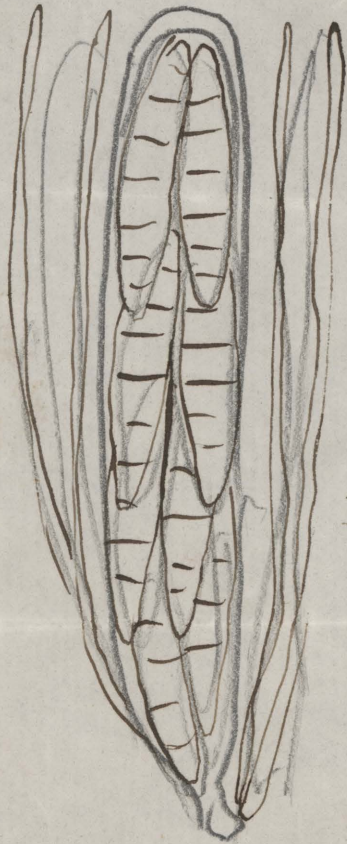


ascis 4 6-spore.
46-50 x 20-25



Spore 14-15
x 8-9.

160-750 = 30



40-45

12-16

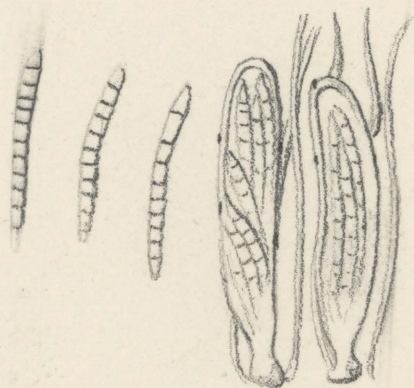
8-sept.

Dil. color.
flav.

Metaph. tubulorum
B. Tannia

5/

2/3



Leptophlebia canadensis
DeNot.
Fr. Lyl.



2-2 1/2

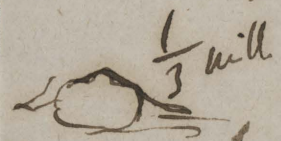
100-120 or 15-17



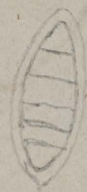
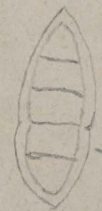
20-22 or 5-7



7 1/2



1/3 with



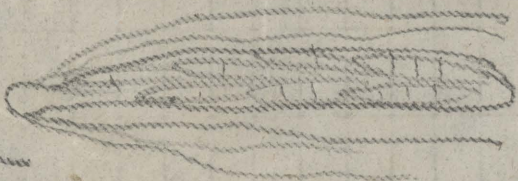
hyal.

in 1 pathy
chemony N. S. W.

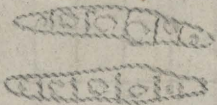
Sept. patharam CS

F. Nov. 2530





70-86
10



2830 N. dove

4
Sept. hours

With
Antic



(Mont.) Sav. Sphaeria Weddellii Mont. N. cell.
peridio exteriori subgloboso pallido verrucoso
irregulariter apice rumpente, interiori papiraceo
naturae filamentis in lamellulas a columella
diantes constipatas contextis atris, sporidiis
in semilibus

Teichospora

Sphaeria rhodochlora

Theidaspis



rosea Desi

~~obscura~~
subrupta

ex icone
Thal. trichosporae

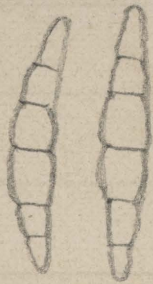
1295



Sphaeria sexdecemspora (Ck)
ad ligni

Capronia sexdecemspora (Cooke)
Shore Mountains (Carpenter) Jan

Desd M.C. Cooke



$\frac{35-38}{6-7}$

dit. flavo-dia



$\frac{120-130}{16-18}$



Lept. Artemisia
(*Fuck.*) *querna*

In Artem. lupan.
Niesl.

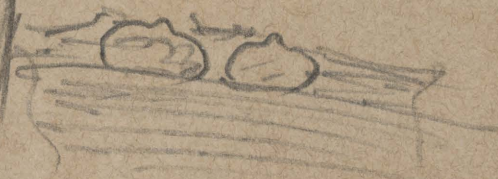
38-40

13-14

ole



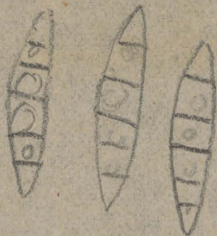
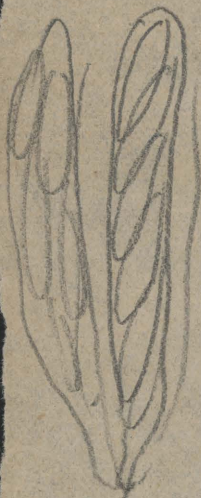
120
22



==

Sept. 11th
Misch
Sept. 12th
Jan of
musk

100 = 16-18



30 = 7
div.



Sept. Casp. Tou
u. cant. Artemisia
Biber (Kurz)

L. gigaspora Meit

in foliis *Carex* palud
Briun



50 - 55 \approx 10 - 12

Melleo

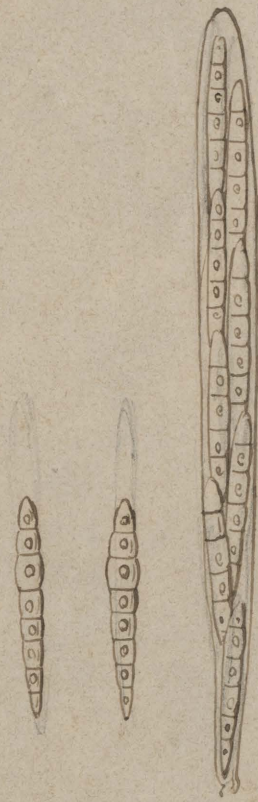


sp. hyalina

asci 144 - 150 \times 21 - 24.

sp. 50 - 55 \approx 7 - 8.

Sept Kalmisii Mont
Brun



di lute olivaceis.

asci 108 \approx 8-9.

sp: 36 \approx 4 - 4 $\frac{1}{2}$

On leaves of Corynocarpus laevigata ^{Lottaria acetabulum Berk}

in comortio. Phoma acmella B



n. Zel.

Xylaria tubiformis Berk
On dead wood

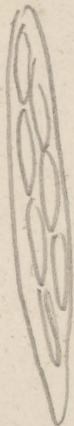
$\frac{1}{4}$ - $\frac{1}{3}$ inch diam.
N. Zel.



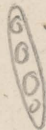
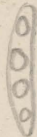
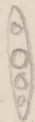
Sporidia $\frac{1}{1000}$ inch long

Cooke n. 686

Plowr. n. 442



$\frac{50-60}{8-10}$

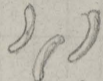


$\frac{8-10}{2.5-3}$

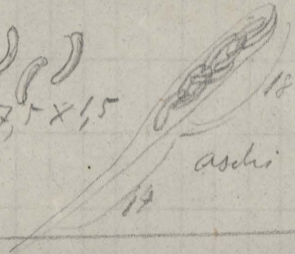
Butanum

D. Epilobii Cooke
rectus

Diabrye platyforma



7-7,5 x 1,5



aschi 30-32 x 3,5-4

on dead stems of Rhipogonum

patches 1-2 lines broad



Pezizidium
opacum
B.K.

20000
0 8000
1250
80

2500
20000
1250
8

N. Zealand.