

2 Grosvenor Villas, Junction Road  
Upper Holloway, London N

My dear Sir

I thank you very much for the specimens and figures which you kindly sent me. They are especially valuable

Leptosphaeria trimeria Sacc (nondum vidi)  
Compare with Sphaeria Duchotii West. (Juncus squarrosus) also mixed with Fekl. F.R n° 17. and on Calamagrostis ex Dr Winter sub Sphaeria culmicola.. I should be glad to see Lept. trimeria - if you have specimen at any time

Spriospora striola . Sacc. In habit the same as Sph. spriospora Mont. Inere variety with elongated sporidia -

113. Sphaeria sancta Rehm in Thumen Myc. Univ n° 451 = Sph. Festucae Libert Exs n° 246

Amphisphaeria culmicola Sacc (non vidi)

Sphaeria customa Fekl F.R no 889, in my specimens no sporidia

Sphaeria customioides Sacc - nondum vidi certe. Sph. culmorum affinis

Sphaeria herpotrichioides Erb Curt Ital 443 in my specimen (? non. vera) triseptate, hyaline

(11) (100)

Sphaeria luctuosa Sacc. (nondum vidi) allied to Sphaeria culmicola Fr ?

Sphaeria amphibola Sacc - I have not yet found the true sporidia in specimens kindly sent to me

Sphaeria nigrans Rob. ex Desmazieres. is different from S. culmitraga



nigrans



culmicola



culmitraga

in S. nigrans - central cell inflated

in S. culmitraga 2<sup>nd</sup> or 3<sup>rd</sup> cell inflated

in S. culmicola no cell is inflated

in S. epicalamiae Rein - Sporidia smaller than

in S. culmitraga and fewer septa

Phaphidophora graminis Sacc (now vidi)  
Cfr. Sphaeria cariceti BTHm ad foliis Airæ

Leptosphaeria littoralis Sacc - (now vidi)  
apparently a beautiful species

Herewith I enclose you two or three specimens upon which I shall be glad of your opinion

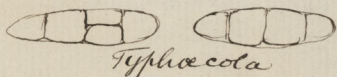
Several of the species by Karsten I have not at present seen

Yours very truly

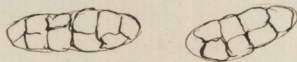
W. Cooke

Dec 1876

Sphaeria Typhaecola C. (Macrospora Scirpi How. Sph. Brett)  
not the same as Macr. scirpi on Scirpus

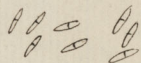


Typhaecola



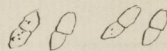
- Scirpi

Sphaeria philochrota C.



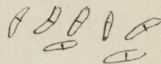
Sporis 015 mm

Sphaeria? scleroidea C.



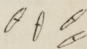
Spor 02 x 01

Sphaeria epistroma C.



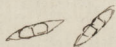
Sporis 02 mm

Sphaerella chlouna C.

sporidies 

uniseptates 016-028 mm

Sphaeria culmorum var



Sphaeria maritima C. on Juncus maritima



Sp. 025-03 mm x 006-008 mm

I will report to you in a few days upon  
your Feziza (Humaria) - which is  
allied to S. fusispora Brett.