

LIBRARY

DOVA

la

Bert. Martini

Tavole di Botanica

(Dono del sig. Cesare Garbelli, 1906)

Vedi Savardo, I codici botanici. ca. Venezia, 1906  
p. [46] nota

Fig. 1.



ANEMONE. TENUIFOLIA FLORE PALLIDE COCCINEO, C.B.P.  
 J.B. pag. 274. Anemone hortense tenuifolia. id. simpliciter  
 flore, Clus. hist. —

u B a



1750

8

132



4



S



~6~





7



8



9



Jo



23



224<sup>h</sup>



۱۲۷۸



~22~





23



26



27<sub>a</sub>



34



1352



Empetrum

42

40



~42~



folis -

malvaria fol sigis.

45

43a





~44~



sp. 17

1462



165

247a



*Urtica virginiana*

48



ubi magis.

si

~ 49 ~

49



St



...the ...

SS

SB



*Egizia Sencha*

50

~54~



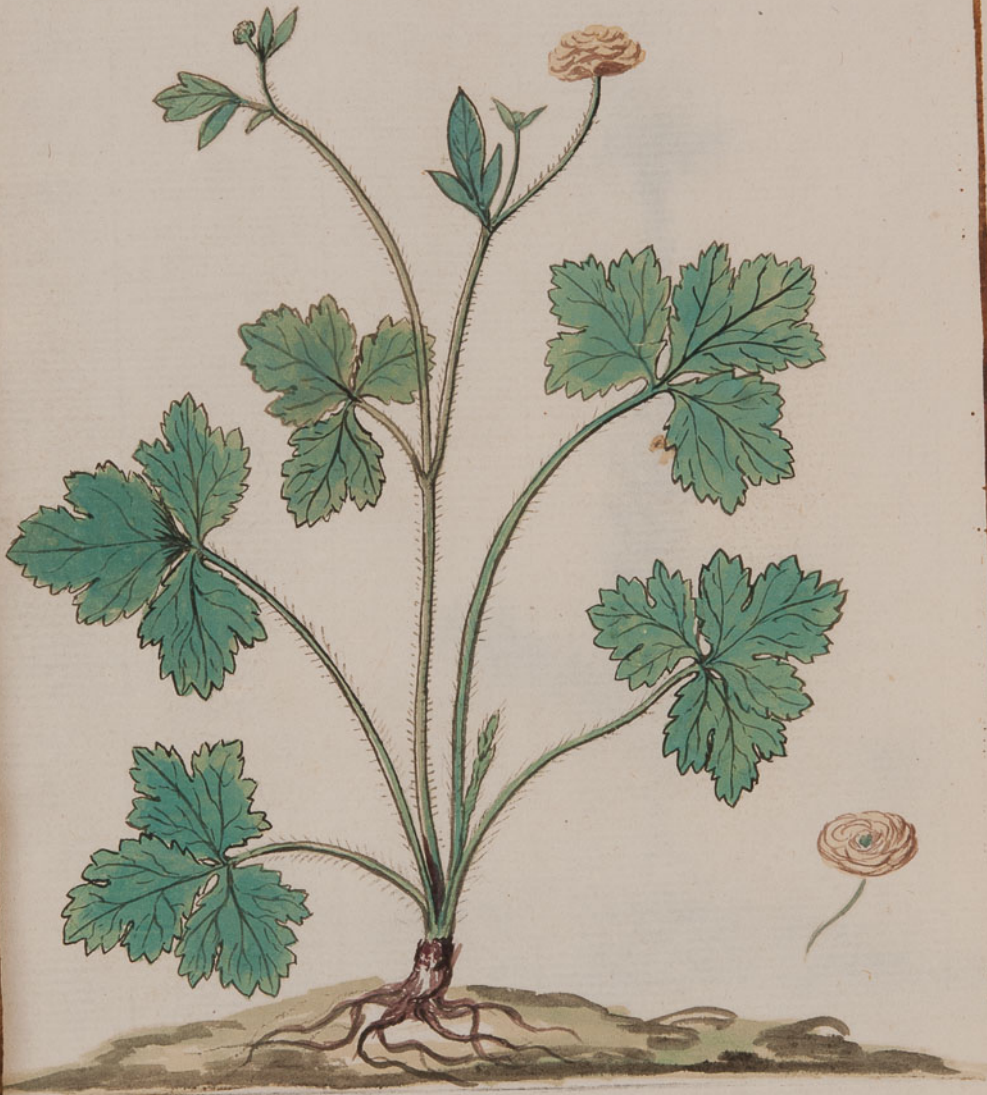


St. ...

SSA



56



S7



capitulis longis

Stipagrostis

60

58



unlabeled

sg~



60



ibis



622





*Handwritten text at the top of the page, possibly a title or description.*

63



642



652



66a



672



681



69



79a





271



Thalictrum aquilegifolium.

74

722



28

urica

273a



274



abgno

75a



76



g. m. m.

277



278





79



80~



882



Fic<sup>a</sup> 11<sup>a</sup>



12



**FUMARIA BULBOSA** MAGGIORE RADICE CAVA FOGLIA GLAVCA  
 FIOR GALEATO RVBENTE - *Fumaria bulbosa radice cava maggiore*,  
 C. B. P. pag. 143. - *Cappio fragmita maggiore*, & *Piede galinaceo*,  
 Card. in Dioscorid. - *Radice caua mag.*, & *orl.* - *Pseudofumaria bulbosa*,  
 Rivin. *Fumaria rubenta mag.* radice caua, Moris. -

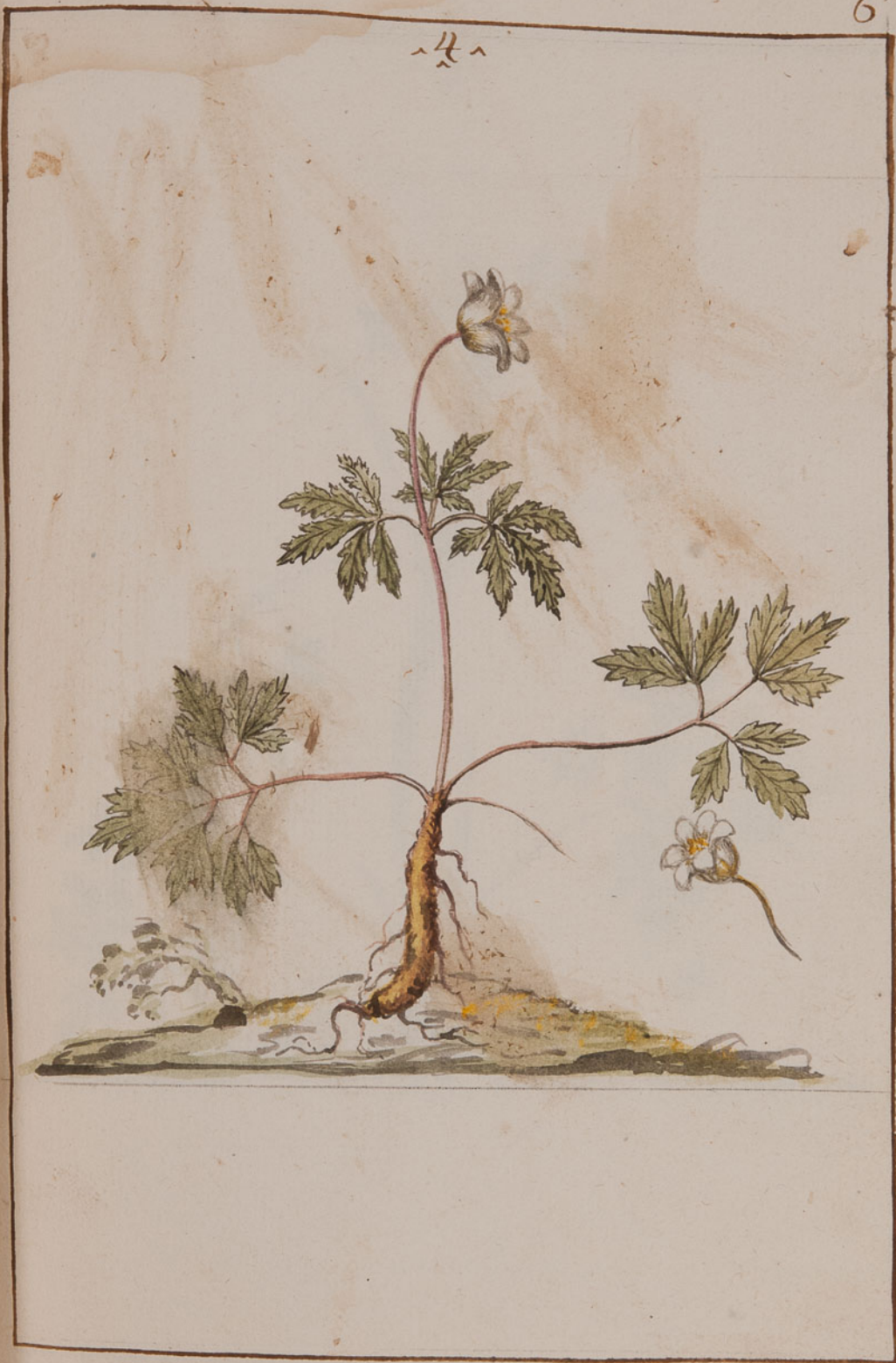
2 - *Ead.* fior bianche - 3 - *Ead.* fior pallido - 4 - *Ead.* fior sub flauo. -  
 5 - *Ead.* fior perporo. -

232



ALSINE hirsuta glutinosa arvensis, foliis subrotunda, fior. pl.  
 papetalo candido sordido - Alsine hirsuta adha viscosa, C.A.B.  
 pag. 231 - Alsine viscaria, Combr. - Alsine spica glutinosa,  
 Gesn. cl. - Aniculus marj 3<sup>o</sup>, Dod. got. - Alsine spica  
 via 4<sup>o</sup> Dod. -

ハクハ



9





12

102



ii



ia

ia



~24~



18



27



Handwritten text at the top left of the page, possibly a page number or title.

Handwritten text at the top center of the page, possibly a page number or title.

22

~20~



23

122





*... ..*

*... ..*

26

~ 24 ~



32

29



35

33



16

L.P.

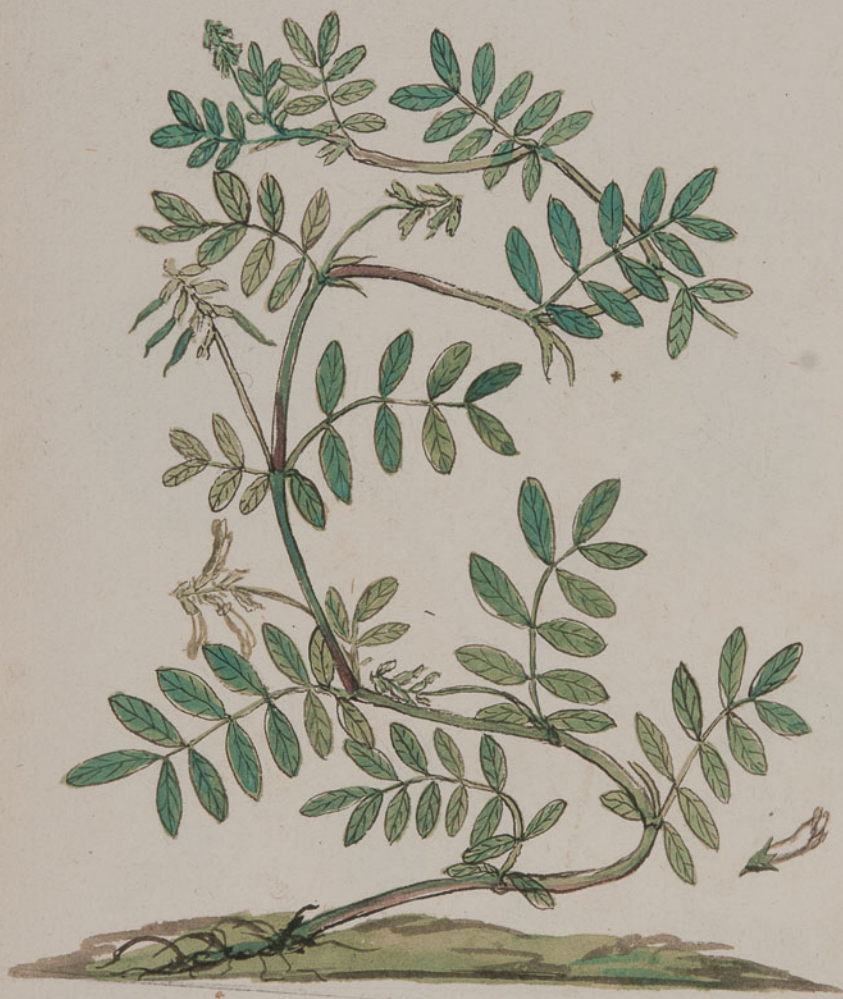


... lista.

... a casta de la il. no d' angel foglia.

56

58



*Plant. mangrovea Infamia diuina - Aram - ... a valle del ... il ... d'acqua foglie -*

13

23



~~~~~

*Plant. monophylla - latifolia - 2<sup>to</sup> cardinali -*

*2<sup>da</sup> - scabell. del. lat. il. h. d. il. cing. d. foglie -*

26



27

1

2

3

4

2

3





29

3

4

1

2

2

7

8

5

2

2

1

17

12

22

13

21

13



7

i



2



3



4



5



6

7



8



9



10



11



12



23

i

2

3

4



5

6

7

8



9

10

11

12



13

14

Namurini — Quasi pinguicula — La pianta pinguicula e questa che ha il fusto d'ingred foglie —

24



i



c

12



13

4



5



6

7



8



9



10



ii

12





1

2



3

4



5

6



7

8



31

1

2



3

4

5

6



7

8

9

10



11

12



34



135

1

2

3



5

6

i



3

4

5

6

7



8

9

10



11



12



46



3



5

6

7

8

Fl. bianca vultuiformi exyptus - Ciza -

49



*hiacinta, Philis hinc*

52



SS









Handwritten text in the top left corner, possibly a name or reference.

80  
52

80



83





87



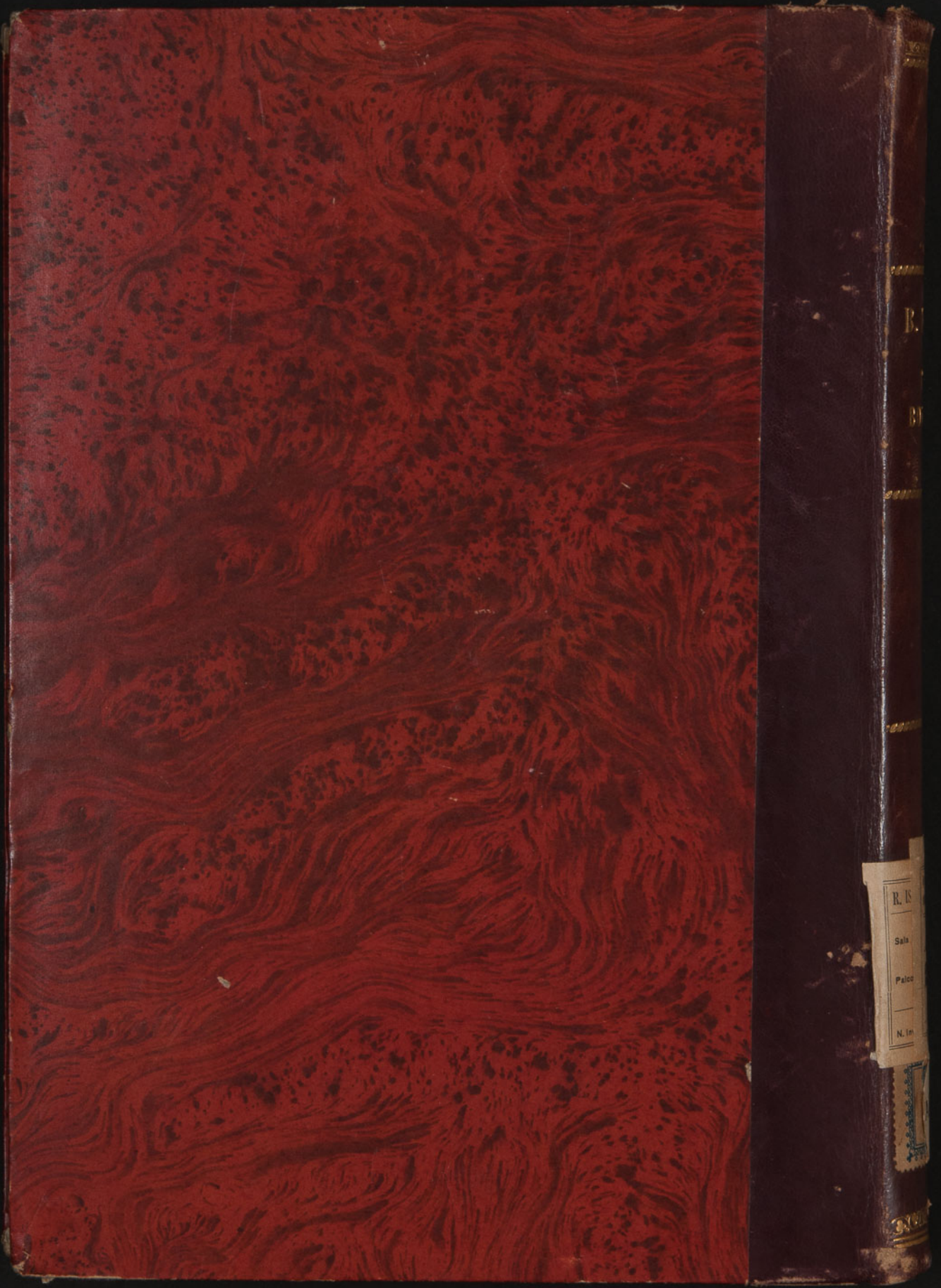


91









R. 18  
Sala  
Palco  
N. 10