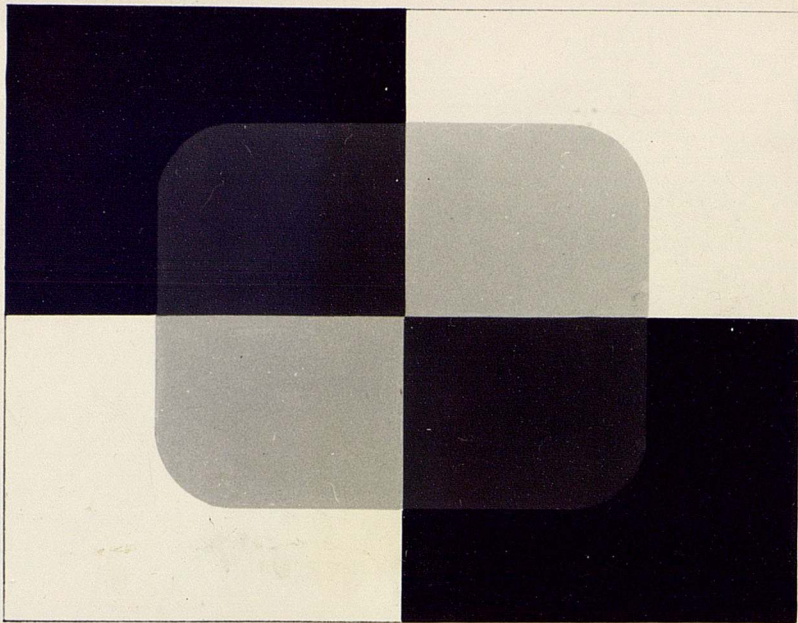


3



62104

Fig. 1

Metelli

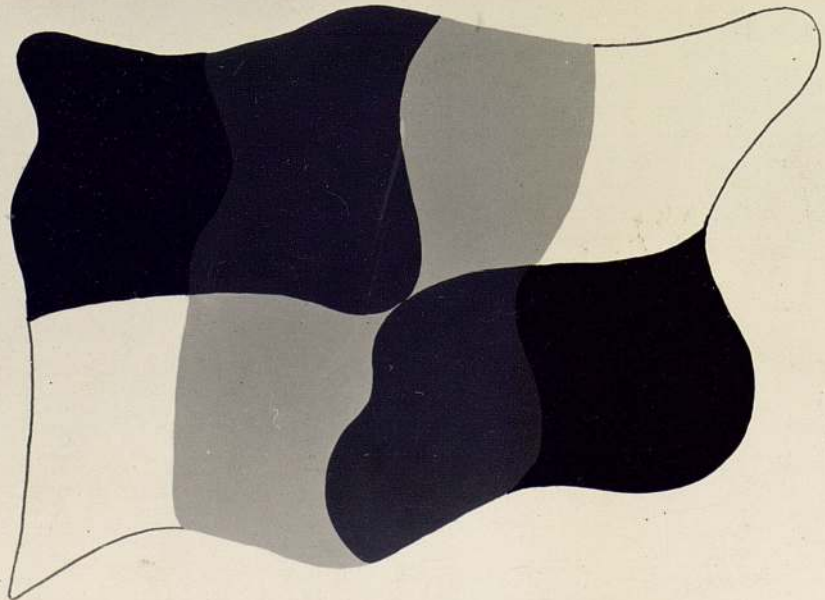
3
4

↑
Top

①

8240
11

1



62104

Fig 2 Metelli

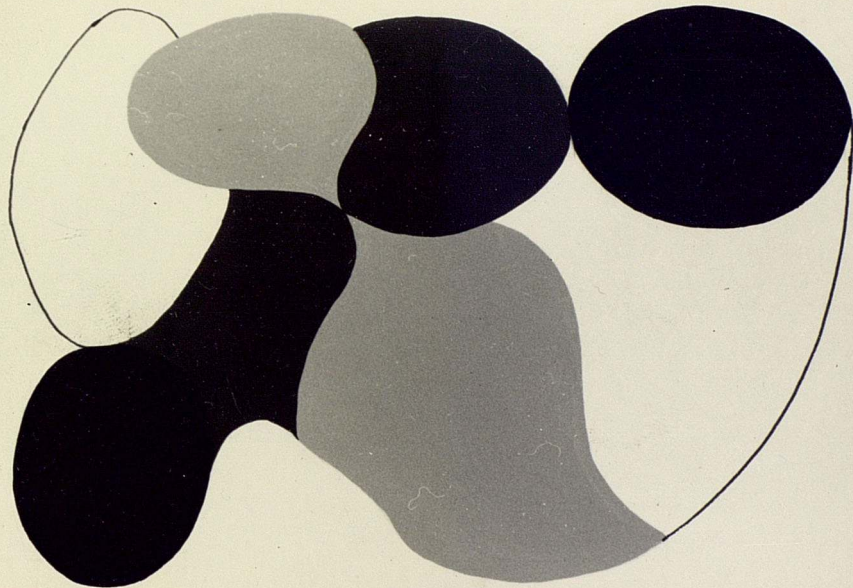
$\frac{3}{4}$

↑
Top

(2)

8240
11

2



62104

Fig. 3 Metell:

$\frac{3}{4}$

↑
Top

(3)

$\frac{8240}{11}$

5

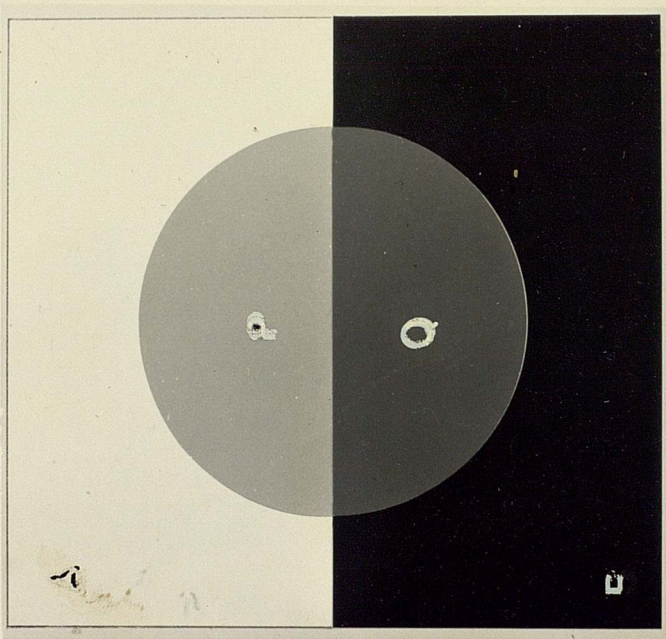


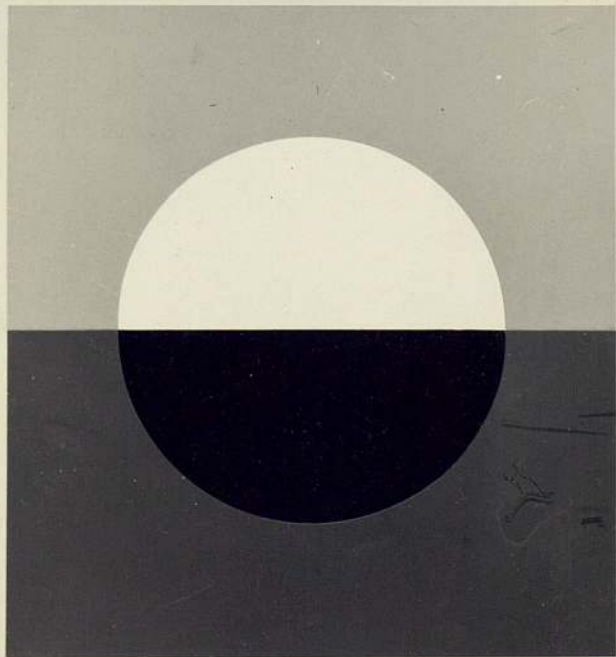
Fig. ~~4~~ 4

Metelli

11
—
0429

63107

(4)



64

62104

(5)

↑
Top

2/4

8240
/ 11

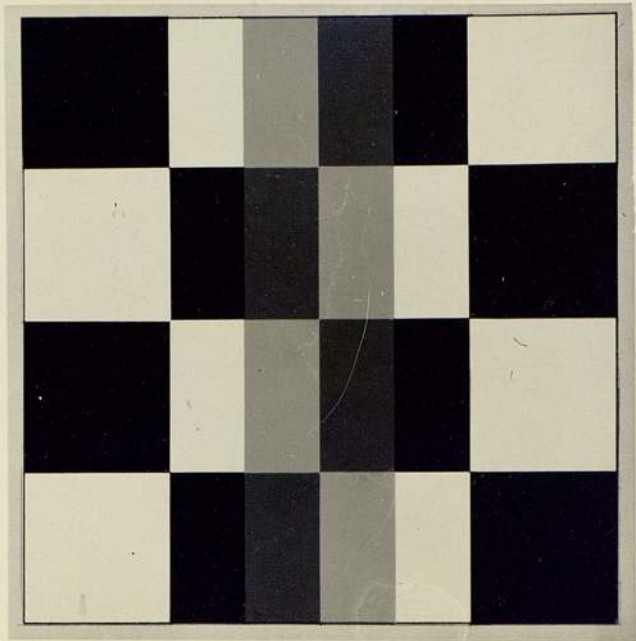
Metelli

5

~~Fig. 5~~

Fig.

Fig. 10



L
Fig. 11

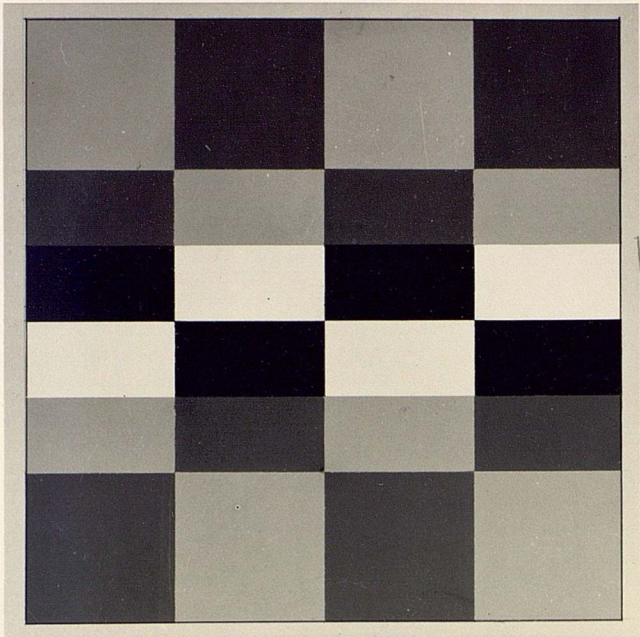


Fig 12
12

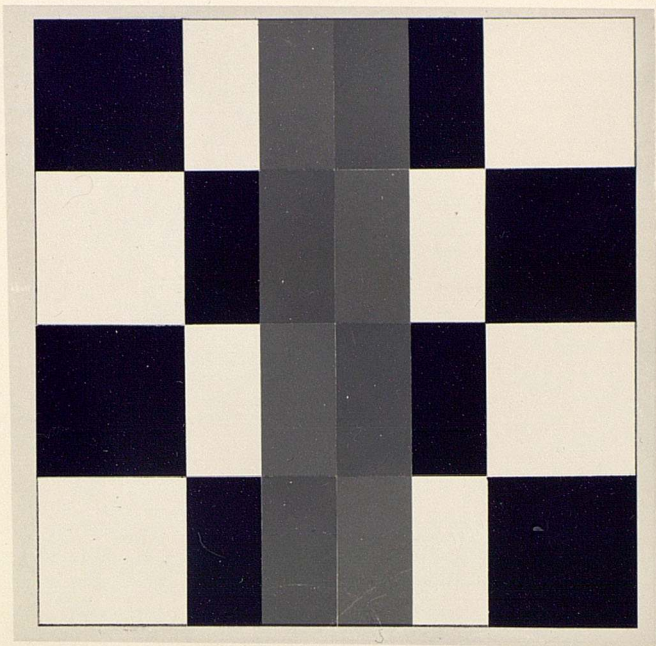


Fig. 13

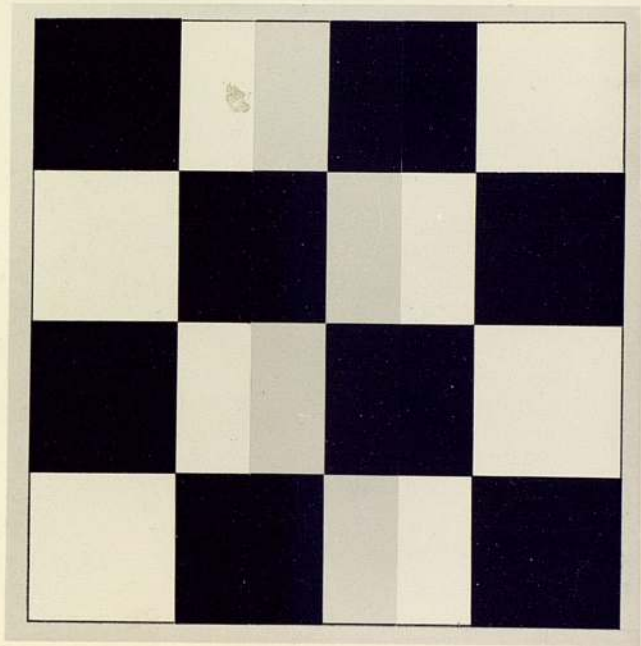


Fig 14

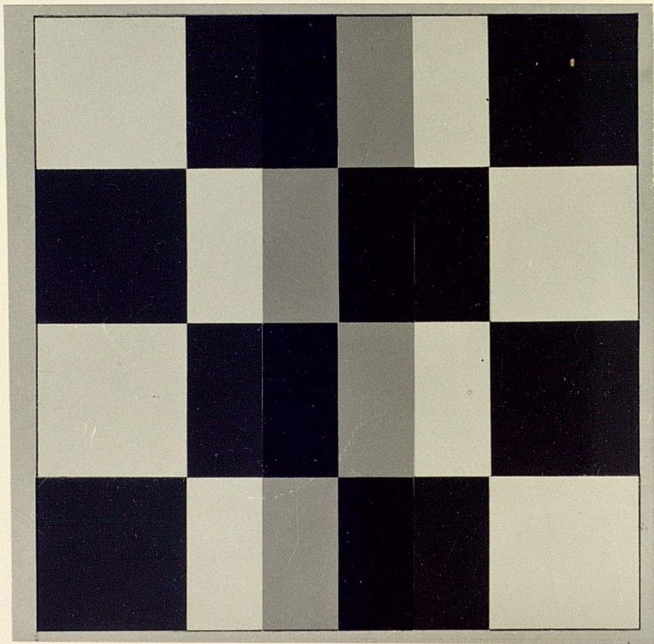


Fig 75

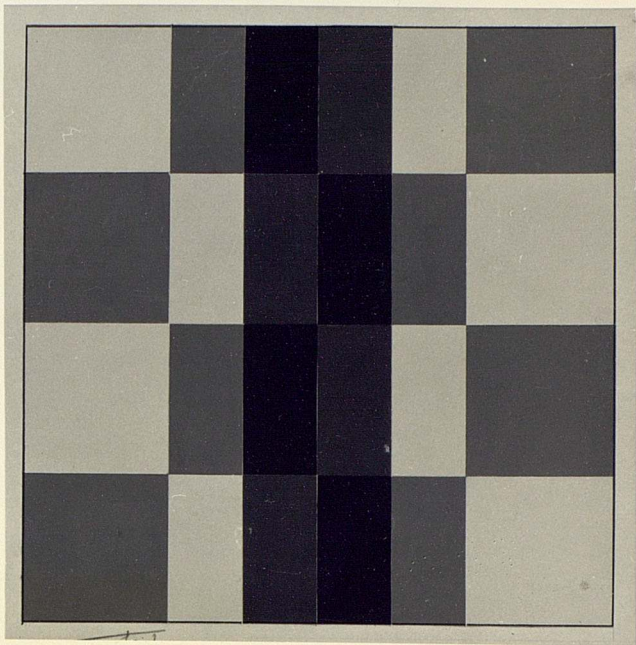


Fig 16

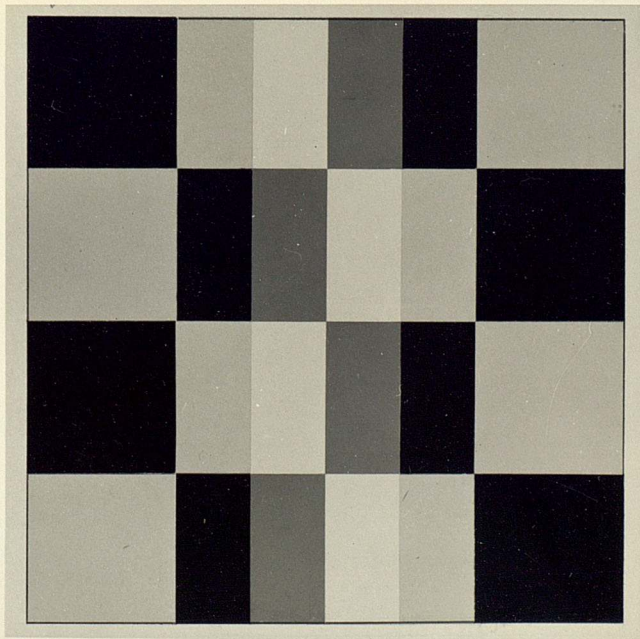
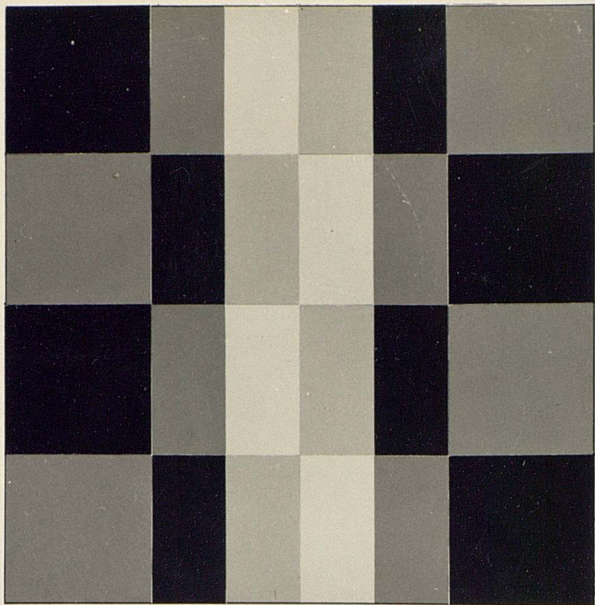
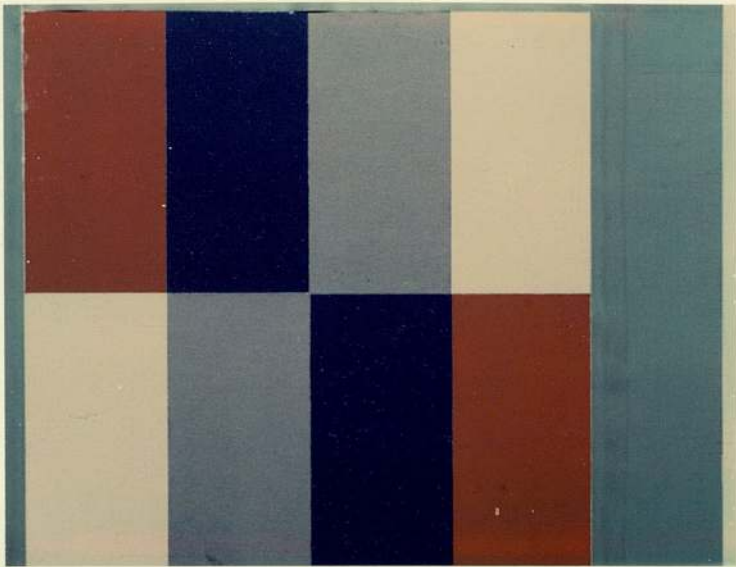
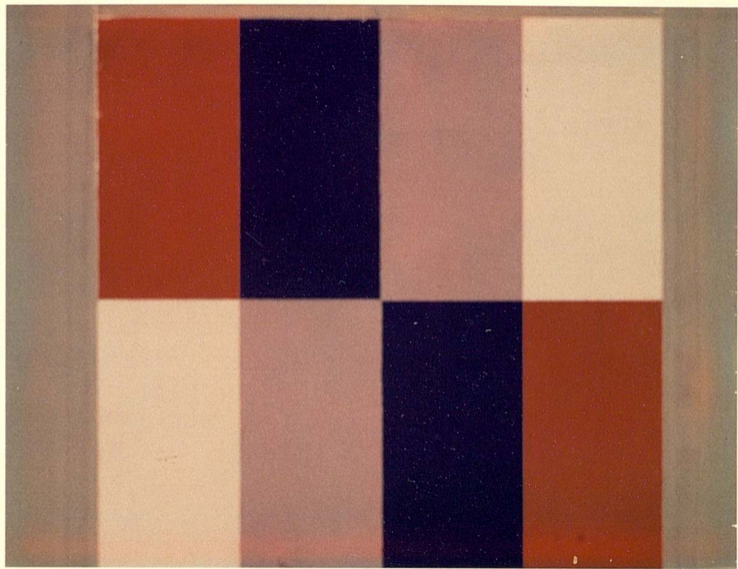
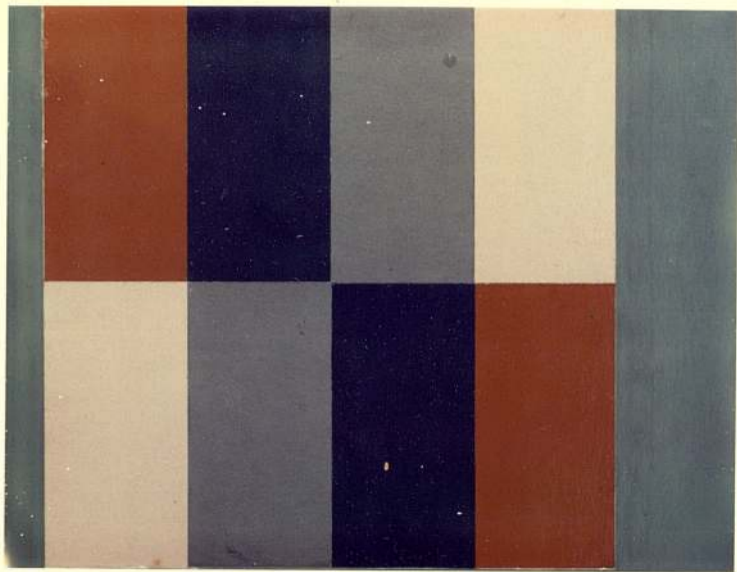


Fig 17













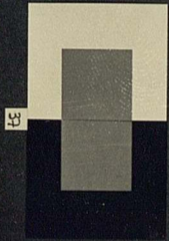
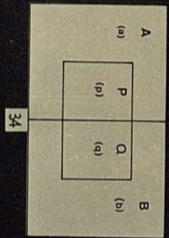
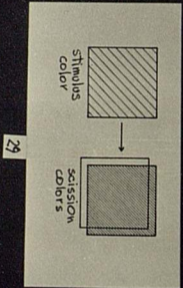
8

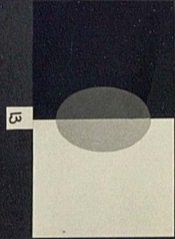
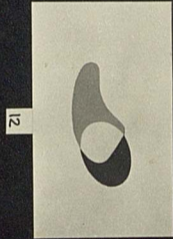
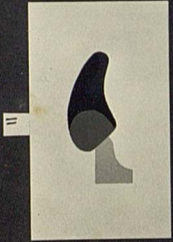


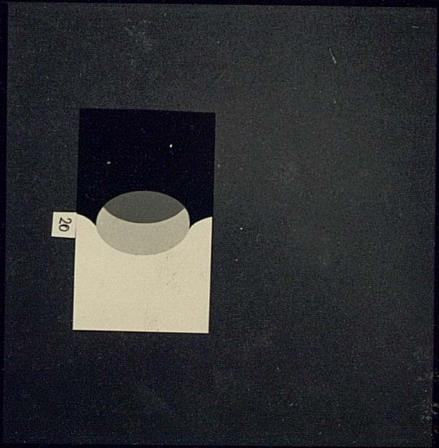
8



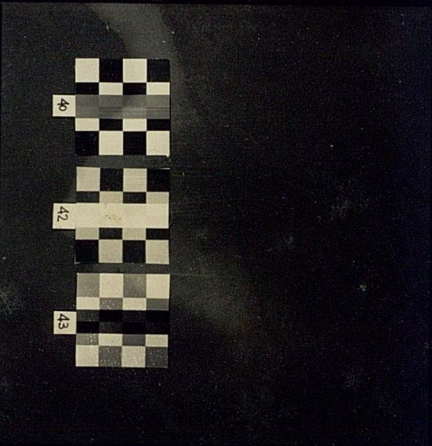
7



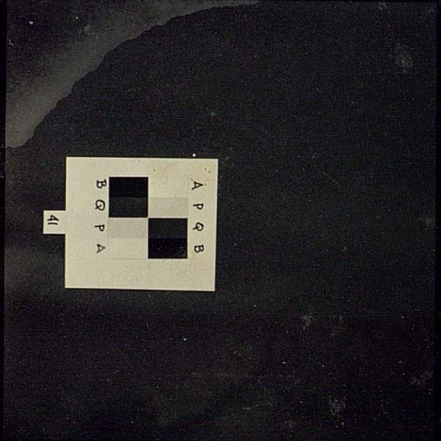




3 KODAK SAFETY FILM

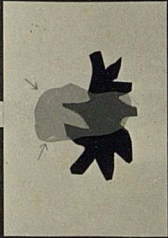


4 KODAK SAFETY FILM



5 KODAK SAFETY FILM

8



4



7



from H. Helmholtz -
Physiologische Optik

28

