

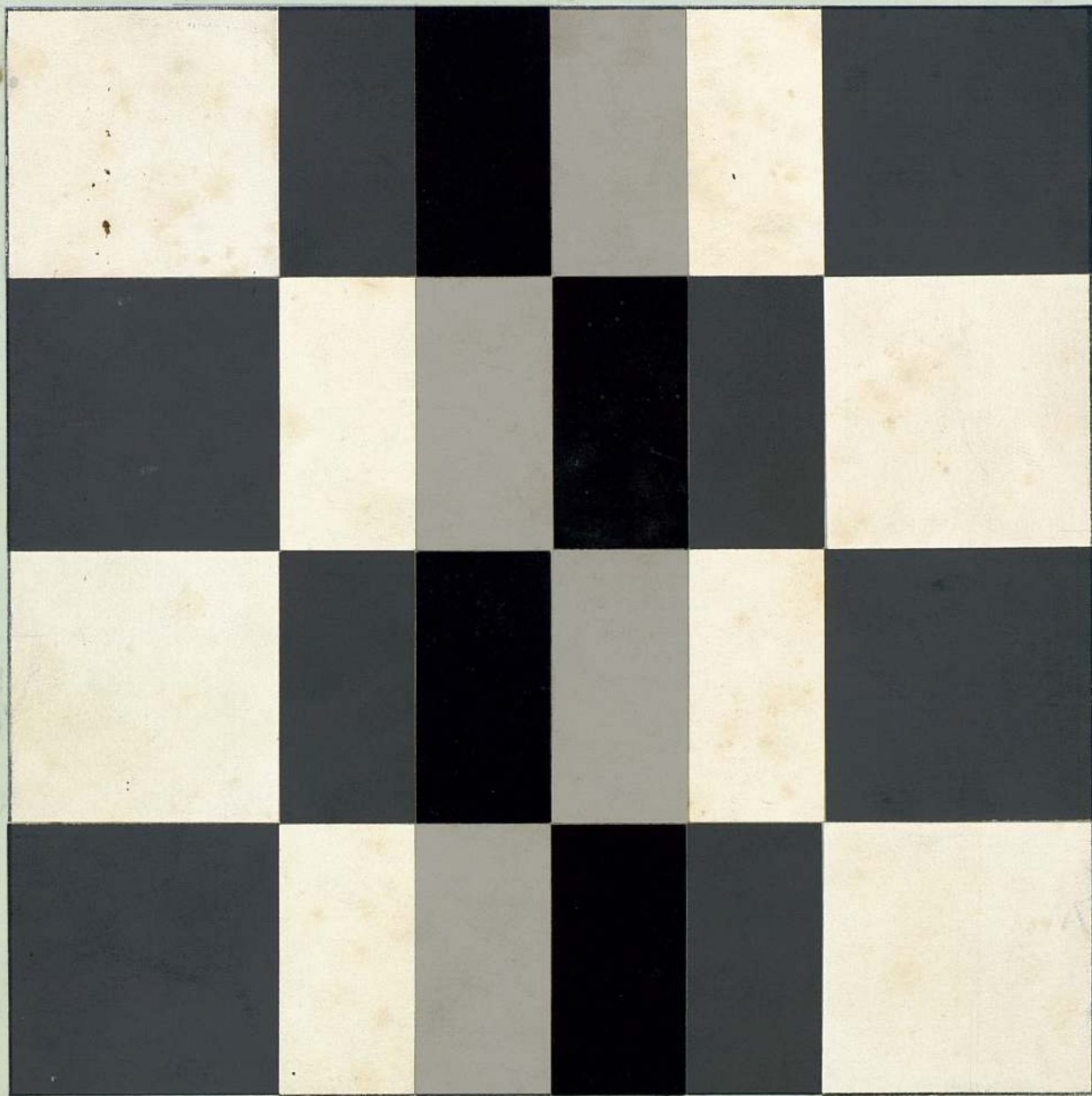
$$d = .584$$

$$t = -.078$$

$$.122 \quad .039 \quad .47 \quad .86$$

$$17/5/0/14/17/5$$

$$\frac{Fy \ 12}{1v} = 10$$



$$d = \frac{.039 - .47}{.122 - .86} = \frac{-.431}{-.738} = .584$$

$$a > h > b > q > t$$

$$t = \frac{(.122 \times .47) + (.86 \times .039)}{.122 + .47 - .86 - .039} = \frac{.05734 - .03354}{-.307} = \frac{.02380}{-.307} = -.078$$

(Fig 12)

Embryos ++

Fr

$$d = .775$$

$$t = .976$$

$$1 \left| \begin{array}{c} .53 \\ 15 \end{array} \right| 16 \left| \begin{array}{c} .63 \\ 10 \end{array} \right| 1 \left| \begin{array}{c} .26 \\ 15 \end{array} \right| .053$$

Fig. 14

11



$$d = \frac{.63 - .26}{.53 - .053} = \frac{.370}{.477} = .775$$

$t > p > a > q > b$

$$t = \frac{(.53 \times .26) - (.053 \times .63)}{.53 + .26 - .053 - .63} = \frac{.1378 - .03339}{.107} = \frac{.10441}{.107} = .976$$

(Fig 14)



11

4

Vo si alterna

C. si +

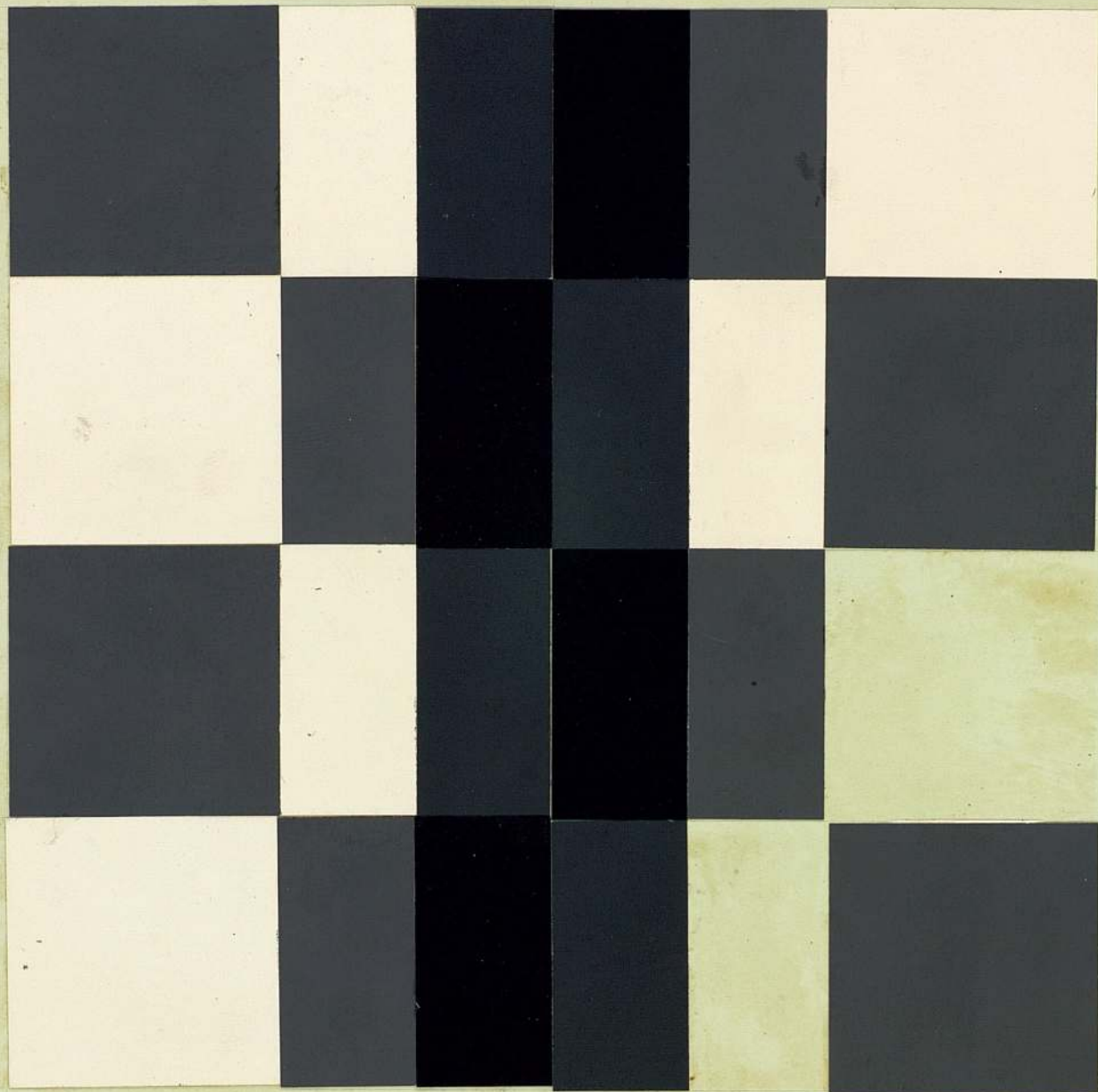
relativi ombre e luce

P. si +

Petter si (+)

Unusquisque ++

2
✓



17

16

★

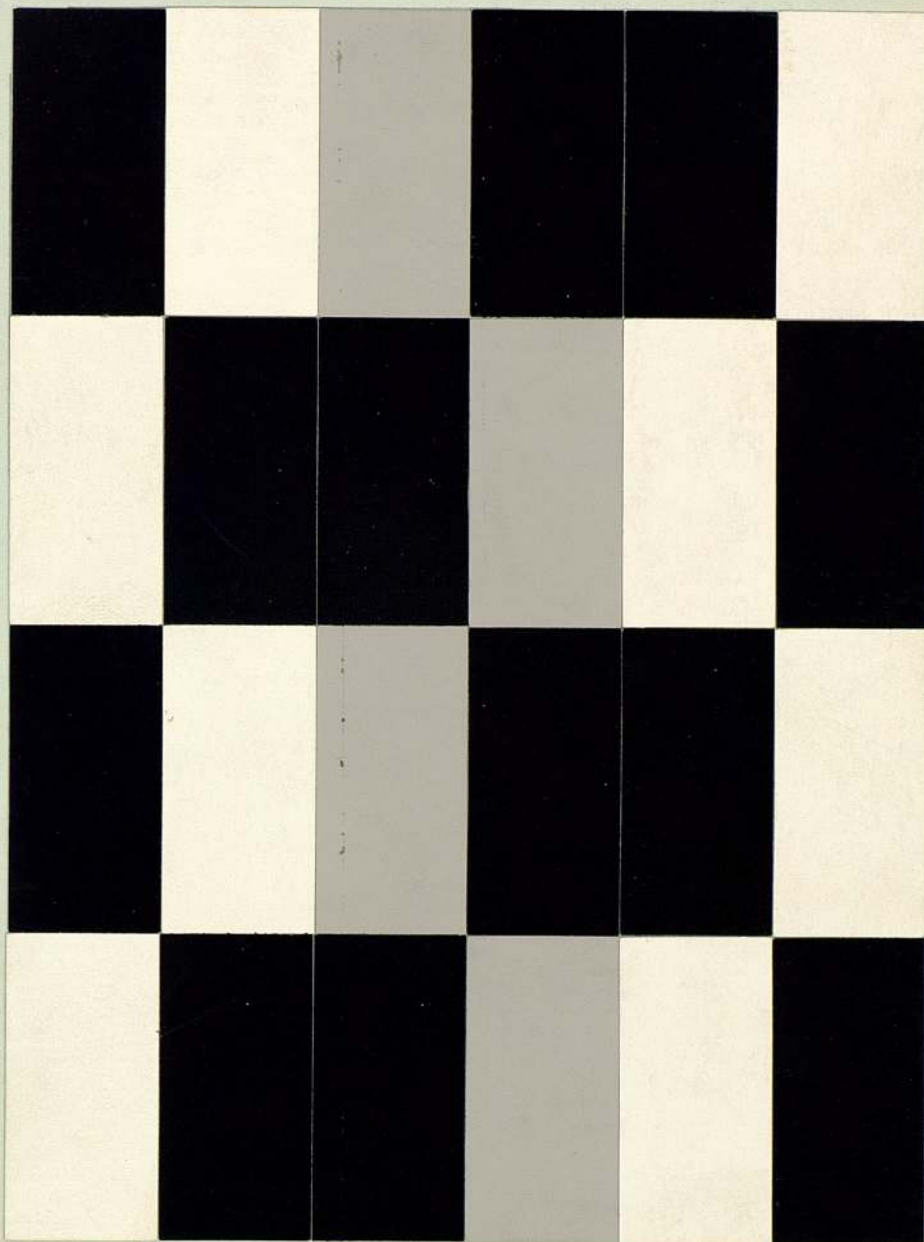
1757

Fig. 16

$$\begin{array}{c|c|c|c|c|c}
 & A & P & Q & B & \\
 \hline
 O & 17 & 15 & 0 & 0 & 17 \\
 \hline
 & .86 & .53 & .039 & .039 &
 \end{array}$$

$$d = .598$$

$$t = .039$$



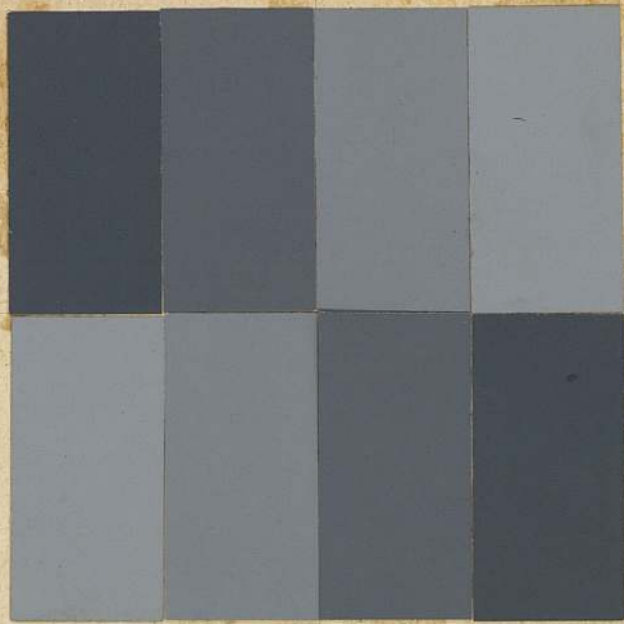
$$d = \frac{.53 - .039}{.86 - .039} = \frac{.491}{.821} = .598$$

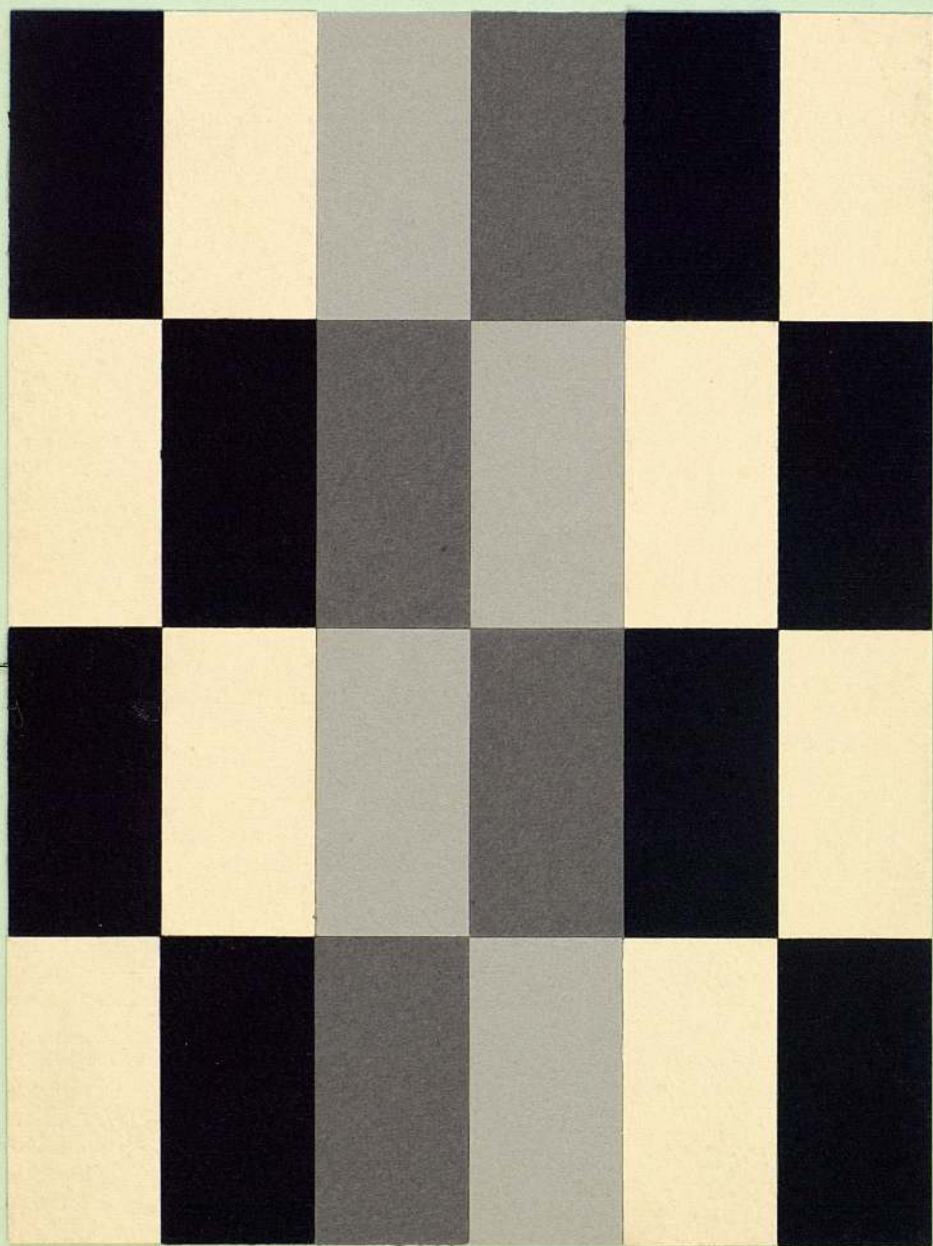
Conspicua all'epistola

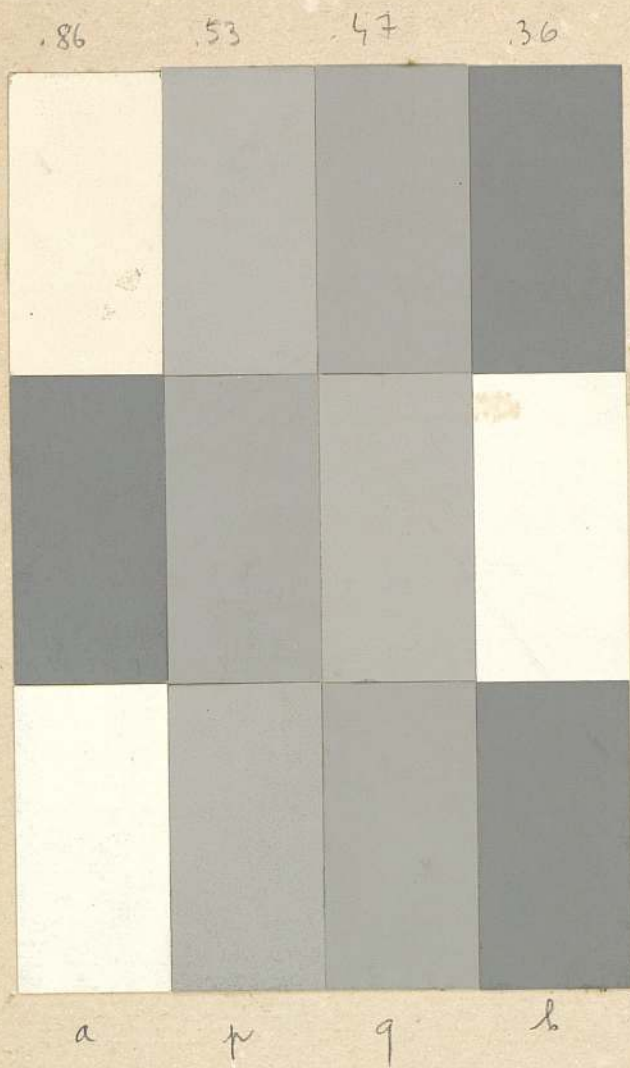
$$t = \frac{(.86 \times .039) - (.039 \times .53)}{.86 + .039 - .039 - .53} = \frac{.03354 - .02067}{.330} = \frac{.01287}{.330} = .039$$

Autograph ++

G 13 / 11 / 98 / 7







$$(1) p = \alpha a + (1 - \alpha)t$$

$$(2) q = \alpha b + (1 - \alpha)t$$

$$\alpha = \frac{.53 - .47}{.86 - .36} = \frac{.06}{.50} = .12$$

$$t' = \frac{p - \alpha a}{1 - \alpha} \quad t'' = \frac{q - \alpha b}{1 - \alpha}$$

$$t' = \frac{.53 - (.12 \times .86)}{.88} = \frac{.53 - .1032}{.88} = \frac{.43}{.88} = .49$$

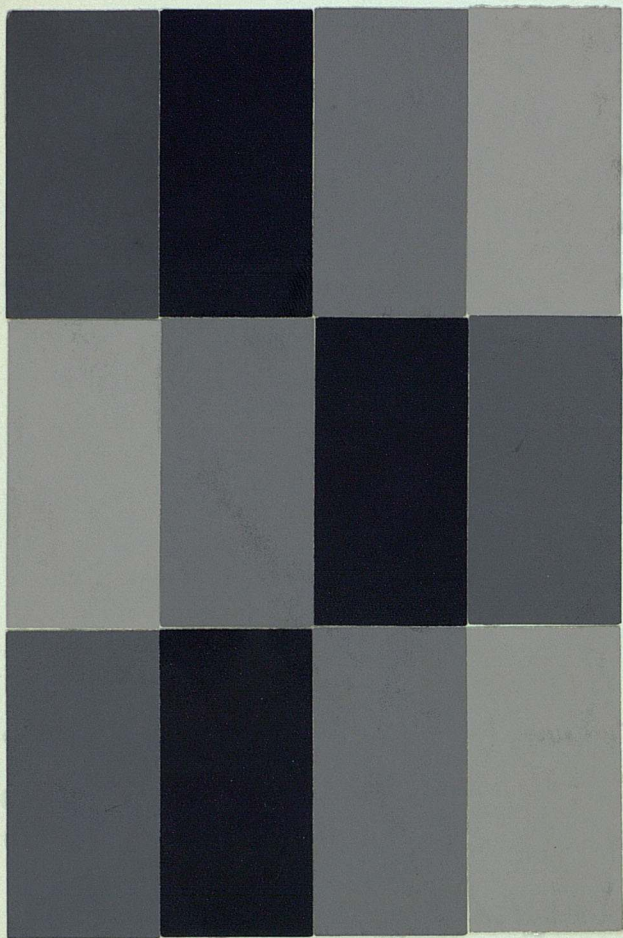
$$t'' = \frac{.47 - (.12 \times .36)}{.88} = \frac{.47 - .0432}{.88} = \frac{.4268}{.88} = .485$$

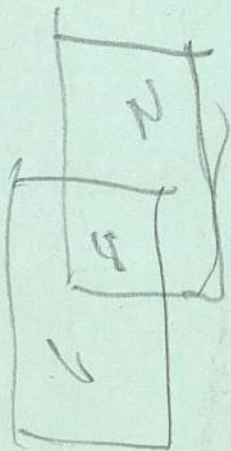
.14

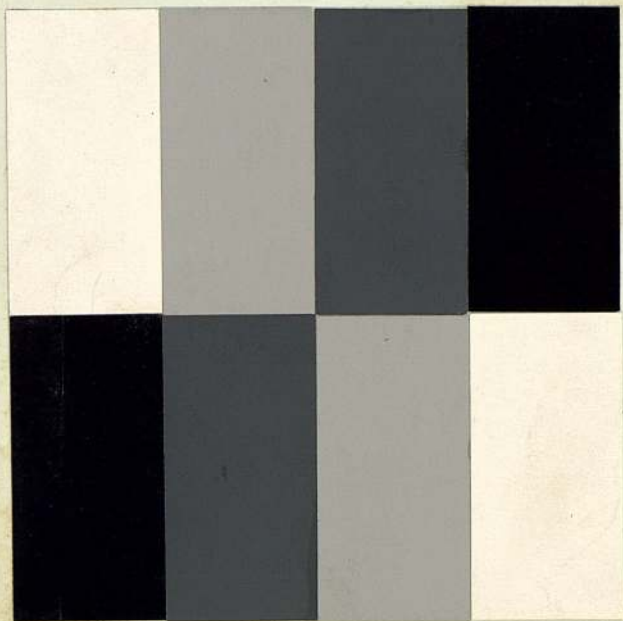
.058

.21

.36

 $b > q > a > b$ $\alpha = .69$ $t = -.01$

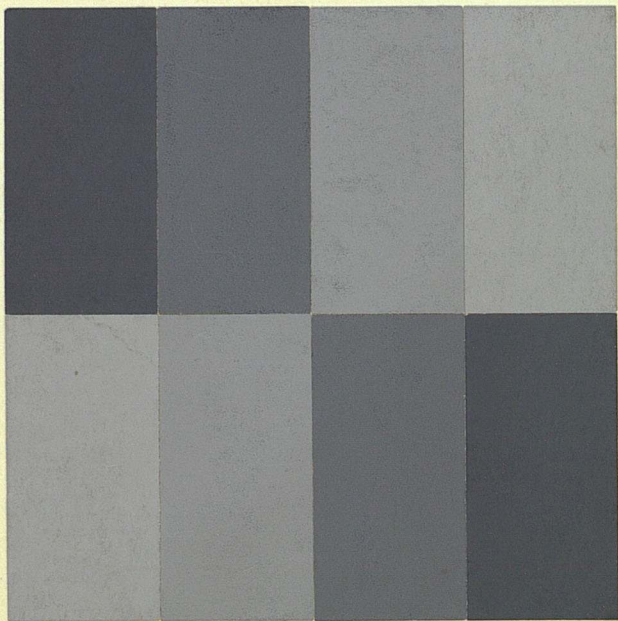




(B)

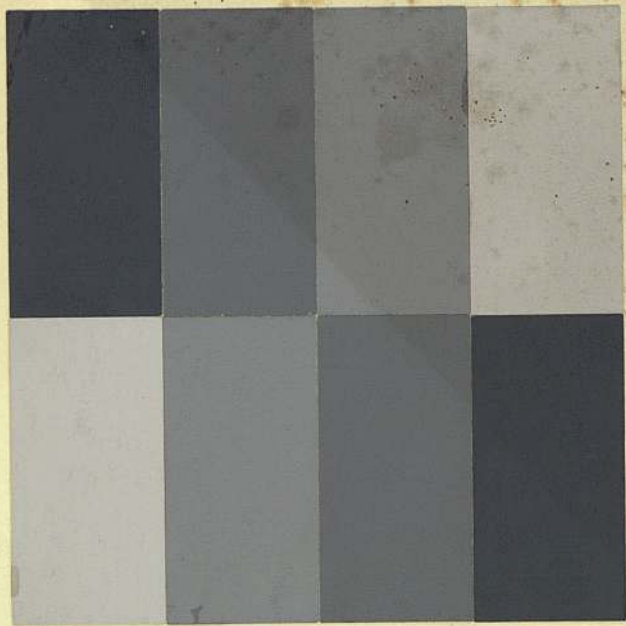
(B)

3



6-9-11-12

-



Level A

4-9-10-13

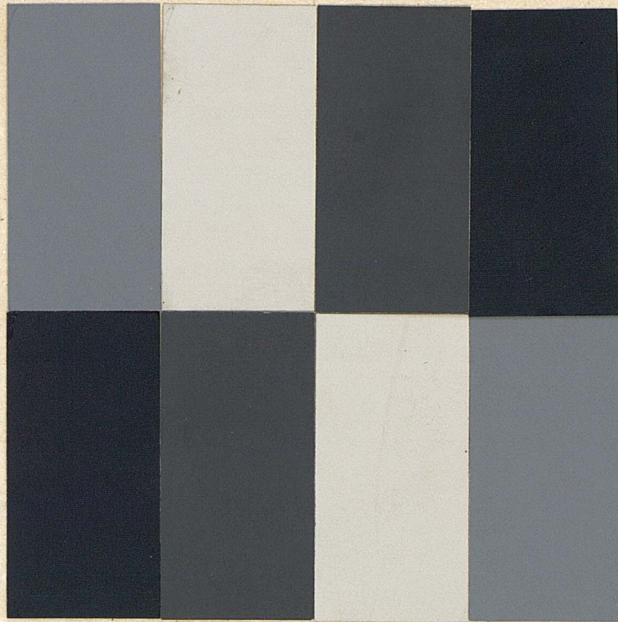
4

G 9

1a

6a

8a



54

100V

1a

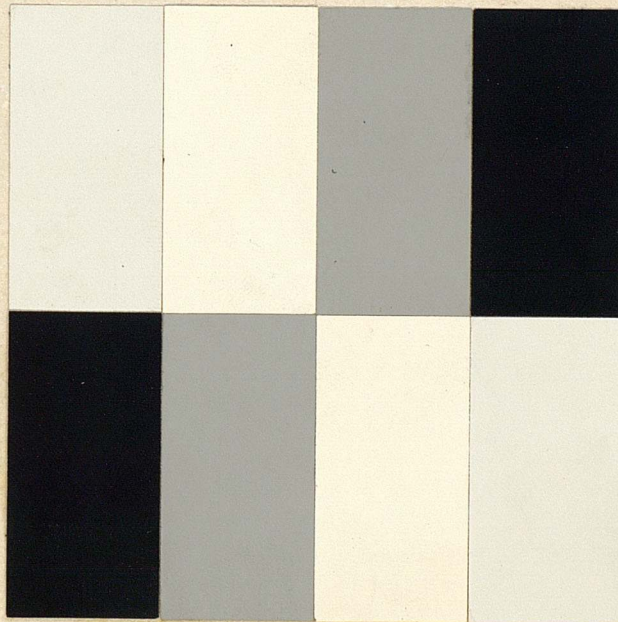


G 1

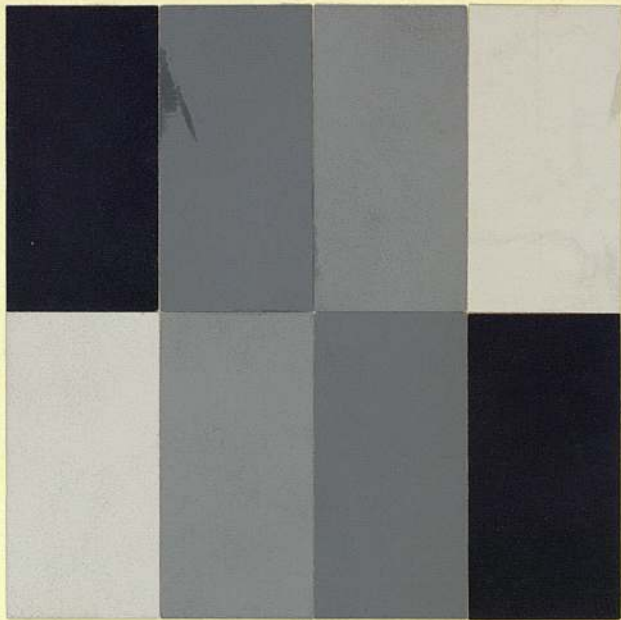
B

2

8



54 Bis



Serie A

1-9-10-15

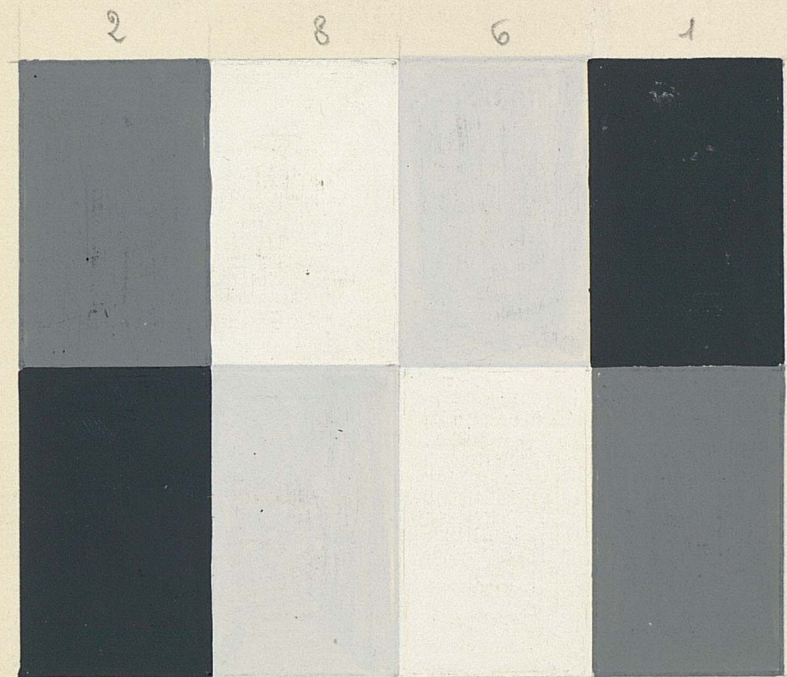
2

11)

$$T = -.4$$

$$P > Q > A > B$$

$$\alpha = 2$$



1

6

8

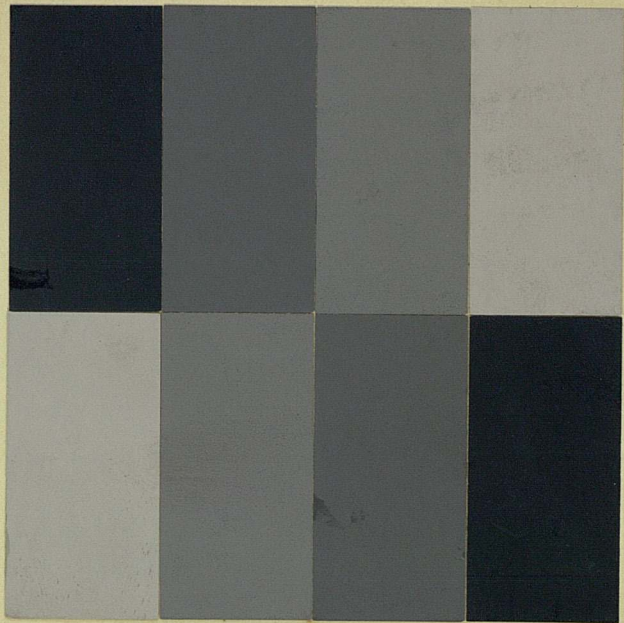
2

incumbent $P = T$

$$\underline{T = .8}$$

$$\alpha = \frac{2}{7} = .3$$

12/B/16/4



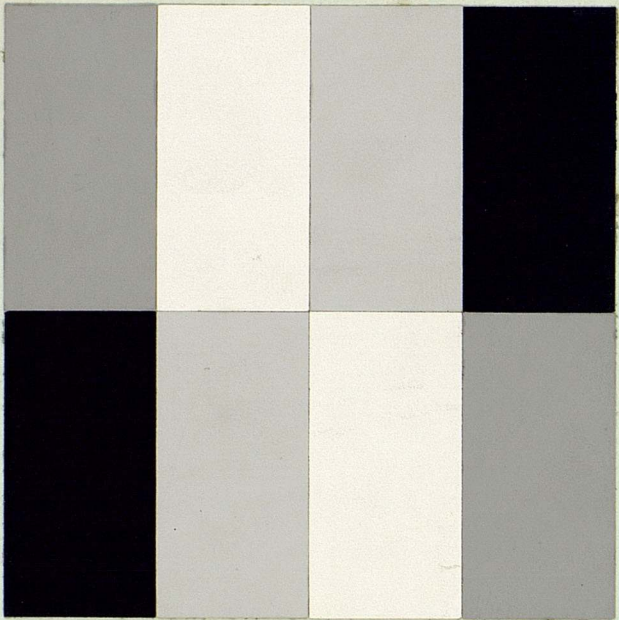
Seite A

2-9-10-13

3

2 / B / 10i / N

+claro 13 / B / 16 / N



p > q > a > b



Va bene;
provare a
piu chiaro

53

+claro V. Fig. 15



[50 ÷ 55]

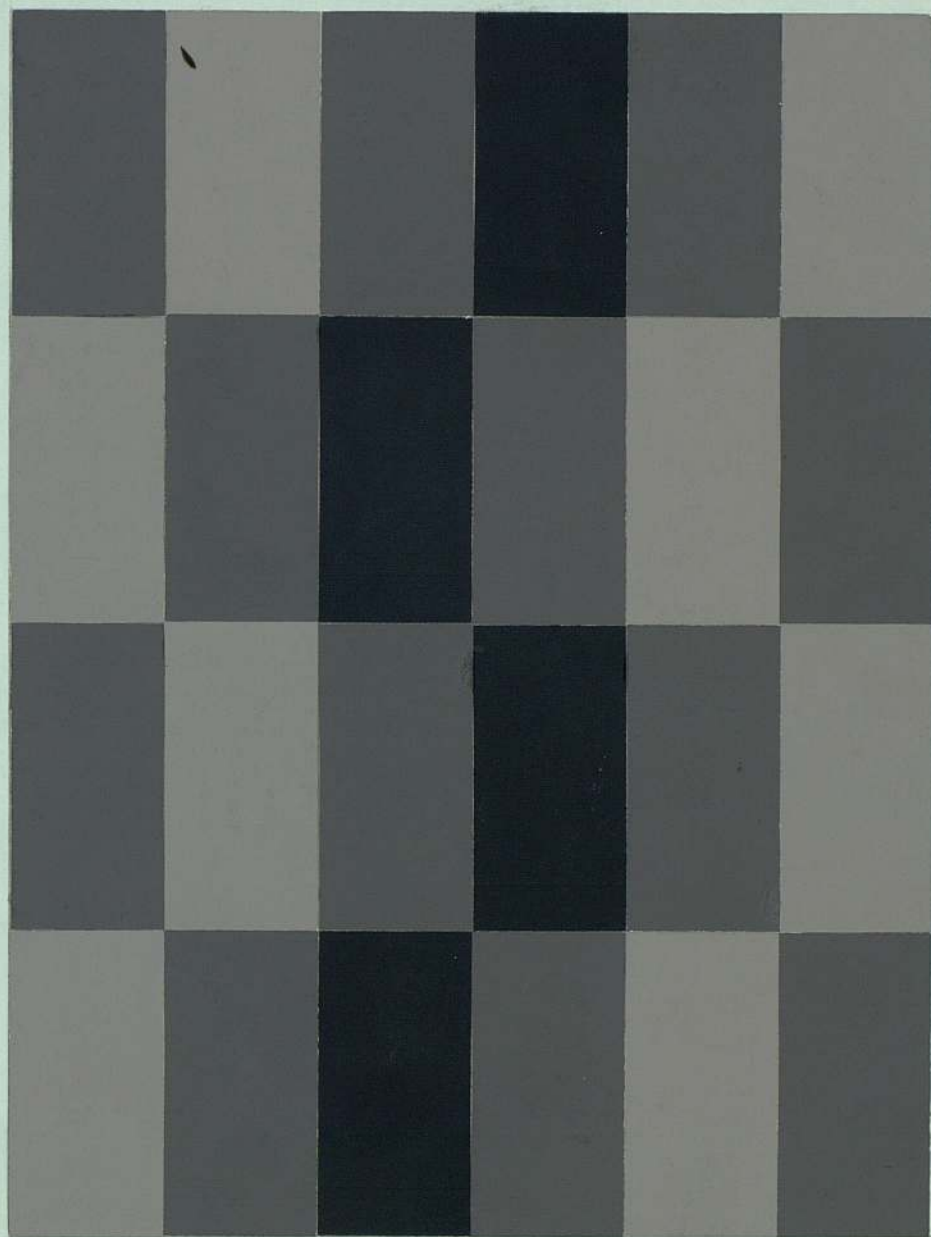
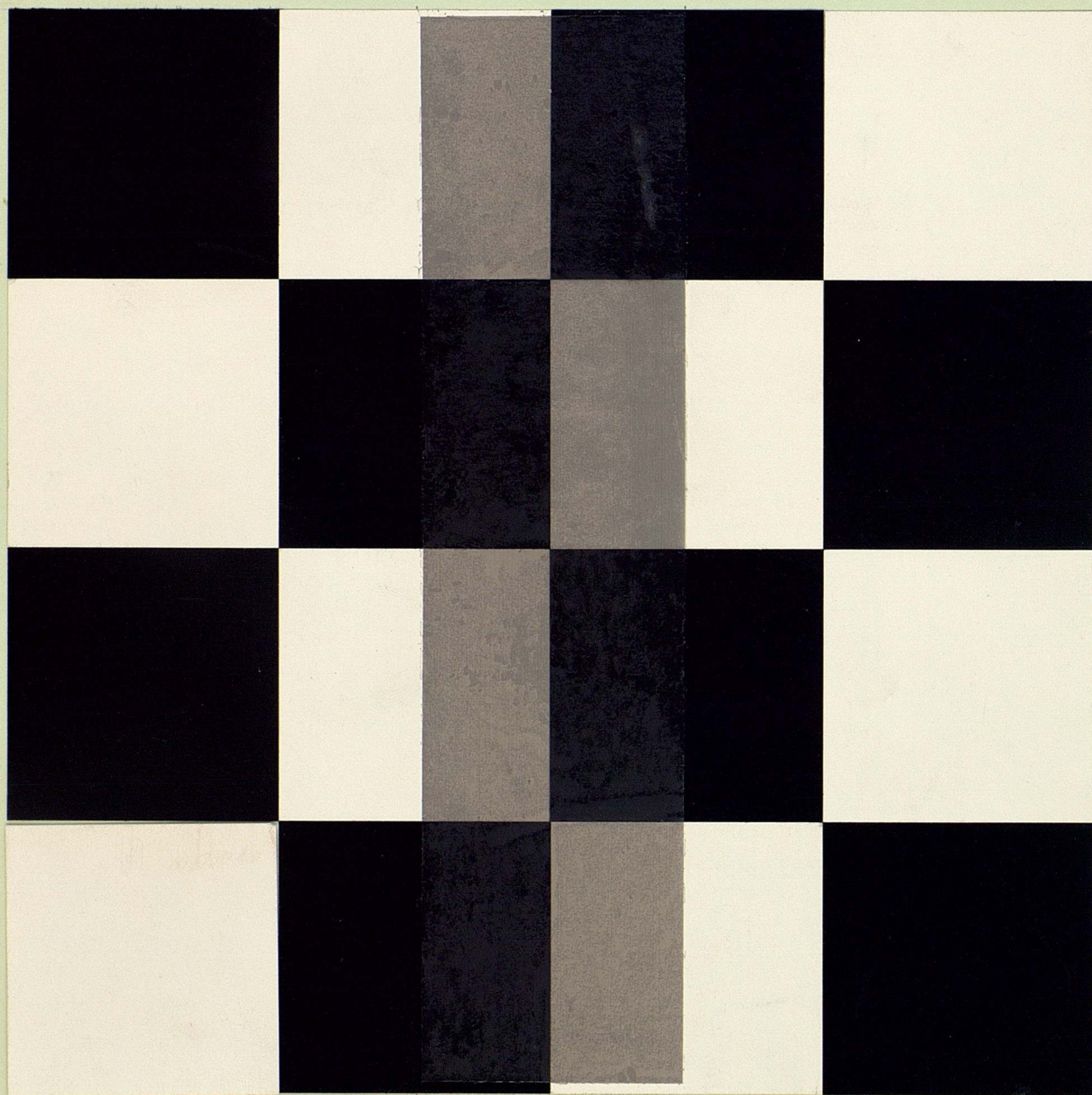


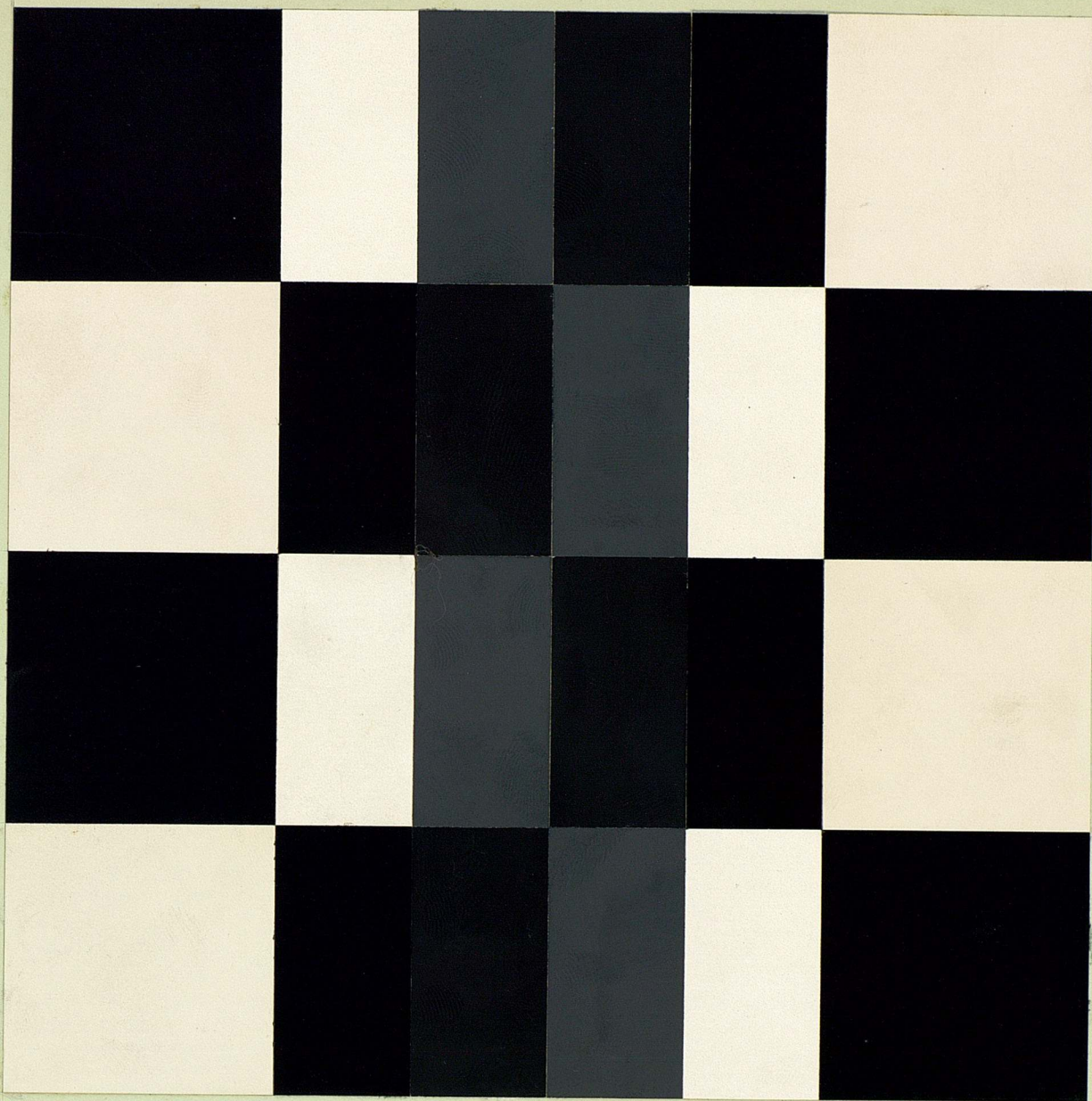
Fig. 45

$$a > b = p > q$$



B/4/1/N

X



(48) v. 10