

Chiarino Signore

Sig. Prof. Pier Andrea Saccardo

Orto Botanico

di

Padova

38/0003-1



13

PAID  
7  
8  
10



Siena 30 Giugno 1905

Chiarissimo Professore,

Attesa la grande sventura che mi ha colpito non ho potuto nel mese decorso inviarle il manoscritto (che oggi stesso Le spedisco raccomandato a mezzo di posta) riguardante la parte della "Flora Italica Cryptogama", a me assegnata, corredata delle relative figure.

Sul detto manoscritto mi permetto fatte alcuni rilievi che Le trascrivo qui retro.

Nella lusinga quindi di aver compiuta l'opera mia in modo corrispondente allo scopo, mi prego confermarmi con i soliti sentimenti di alta stima

Devoto

H. Bate



- Per l'ordinamento ho seguito i criteri da me esposti nel lavoro „ Origine e sviluppo delle Leptostromacee „, e lo stesso per il significato di alcuni generi, come ad es. Chaetopeltis e Lacidium, il quale ultimo viene perciò ad essere eliminato dalla flora italiana.
- Per gran parte delle specie ne ho controllati i caratteri in esemplari viventi: per le altre sono stato costretto a riportare solo la diagnosi data dalla „ Sylloge „ sulla fede dei singoli autori, non tralasciando di fare le debite osservazioni dove ho creduto necessario.
- Mancano alcune date di fondazione di generi e specie perché sprovvisto di relative opere micologiche, di cui manca altresì la precisa data di stampa negli elenchi bibliografici.
- Di alcune specie poi, quali Leptostroma Pinorum e Donacinum non ho certezza assoluta se siano state raccolte in Italia (Veneto) come apparirebbe dallo schedario.
- Tra le „ exsiccata „ ne ho aggiunte diverse estere, specialmente nel caso di deficienza di quelle italiane.
- Le figure eseguite sono 27: mancano quelle dei generi Dothichiza, Sporonema, Plesococcum, Amerosporium, Polynema e Phaeodiscula, dei quali non mi è stato possibile avere alcun esemplare.



- *Ogni figura è disegnata  $\frac{1}{4}$  più grande  
del modello già inviatomi: perciò basterà  
una lieve riduzione, anco per non alterare  
la finezza del tratteggio*

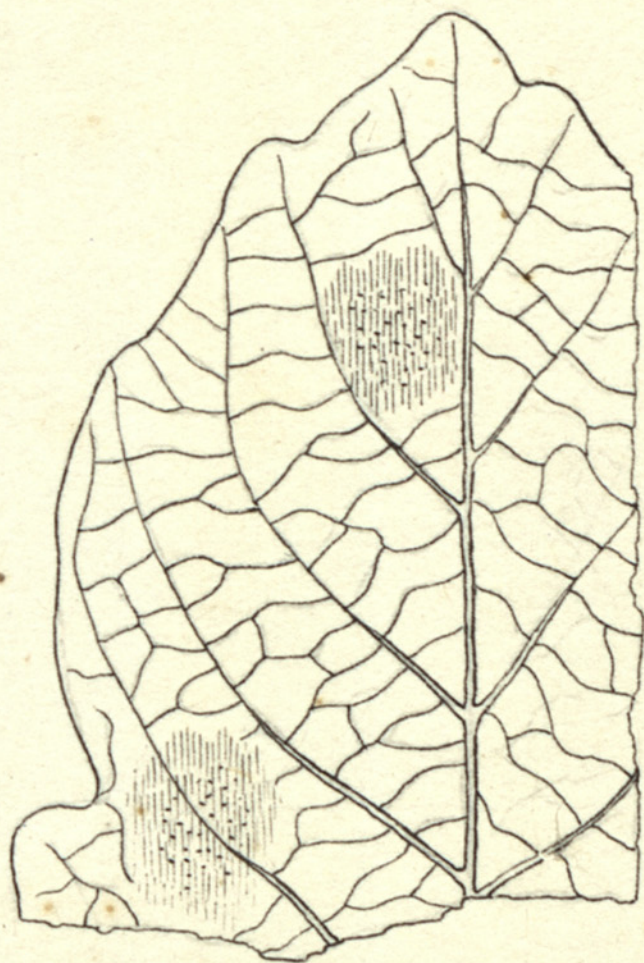
---



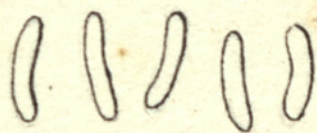
1



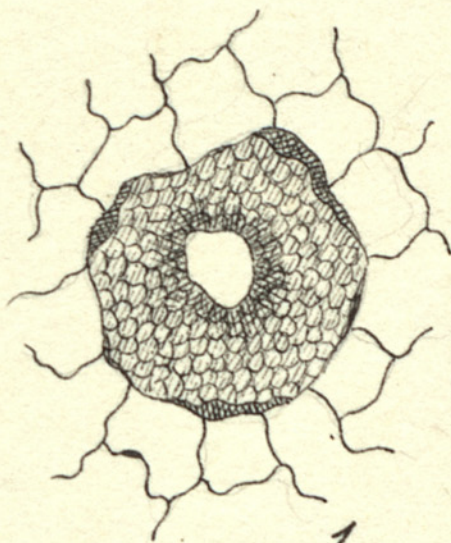
38/0003-3



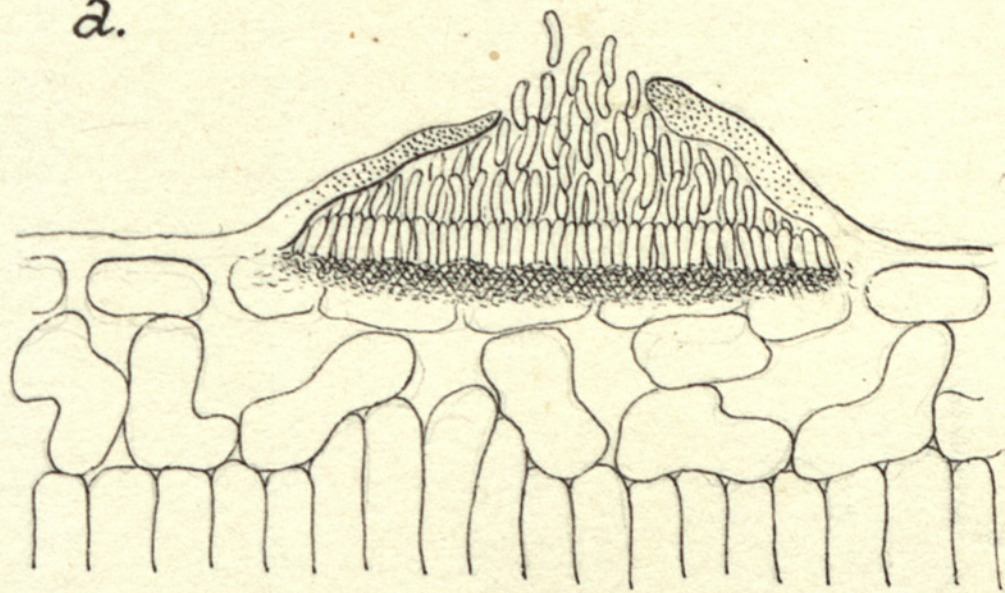
a.



d



b



c



Fig. 1. Leptothyrium acerinum

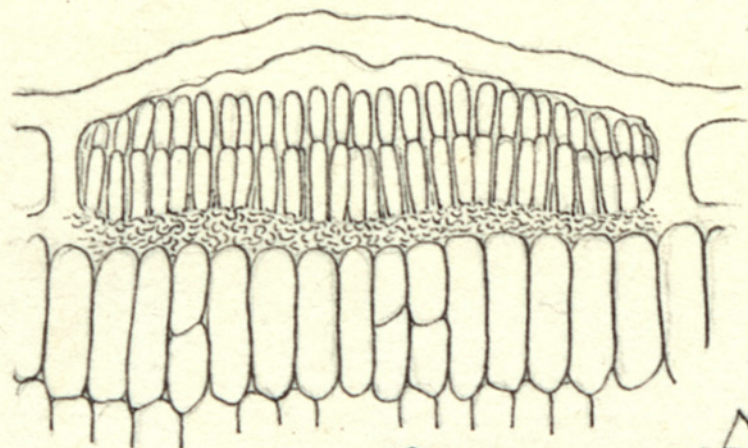
a, porzione di foglia di Acer con periteci; b, peritecio intero ingrandito; c, idem sezionato; d, sporule.



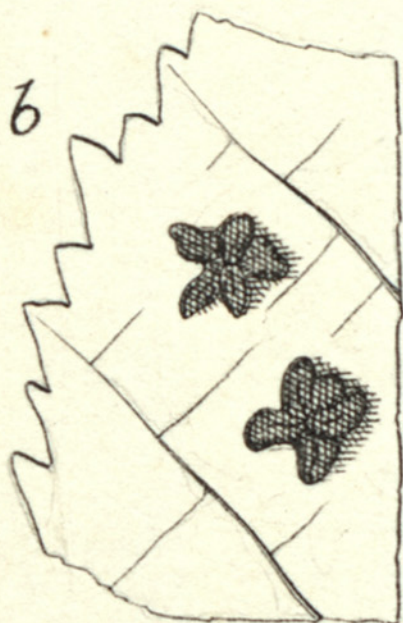
2



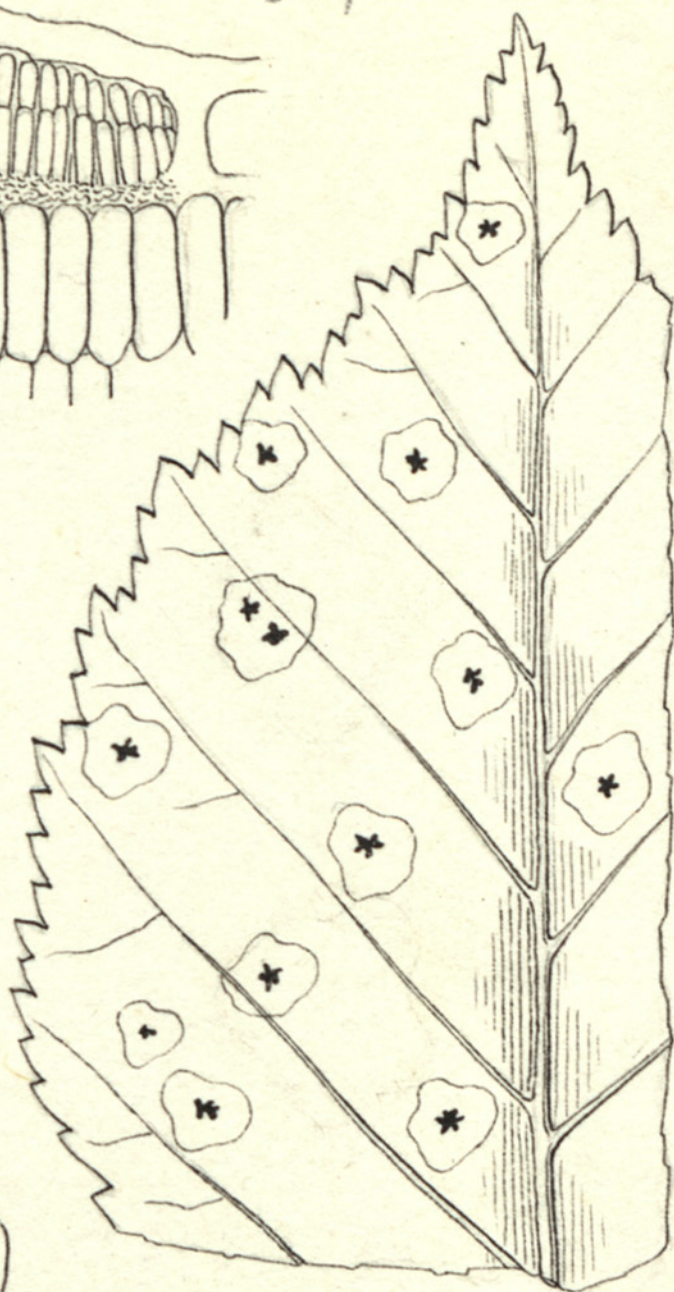
38/0003-5



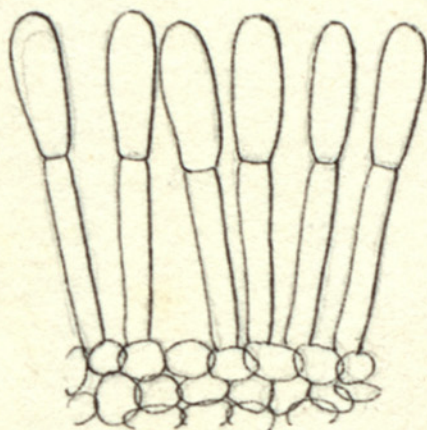
c



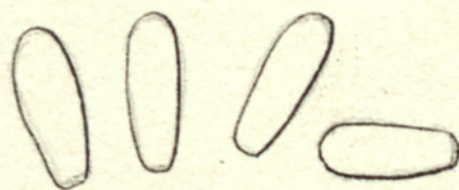
b



a



e



d

2



Fig. 2. Piggotia astroidea

a, porzione di foglia di Ulmus con periteci; b, idem ingrandita; c, peritecio sezionato; d, sporule; e, sporule con basidii



3



38/0003-7

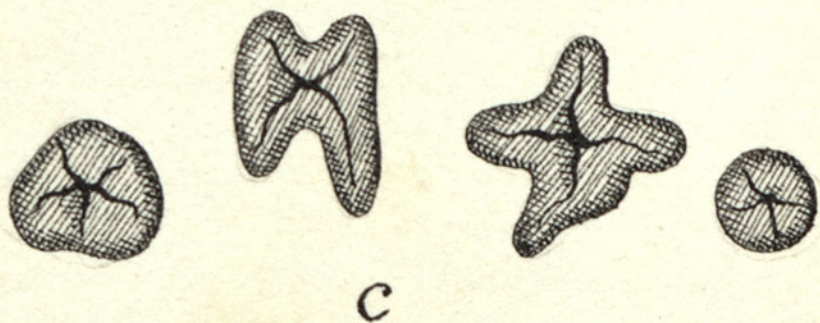
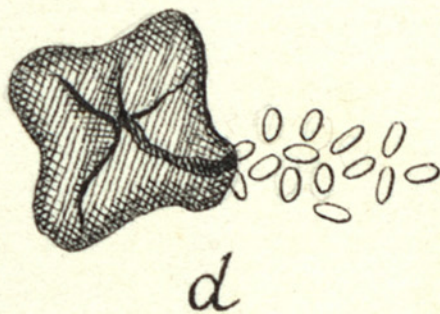
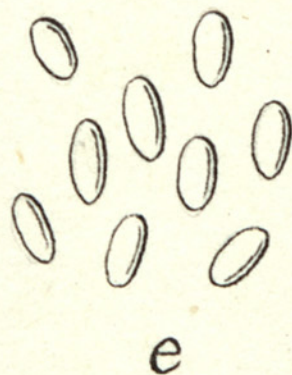
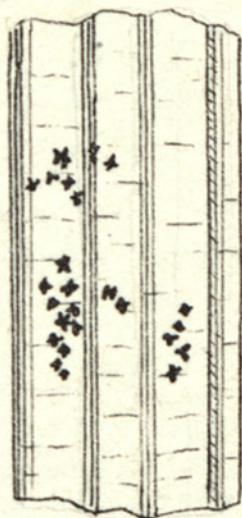
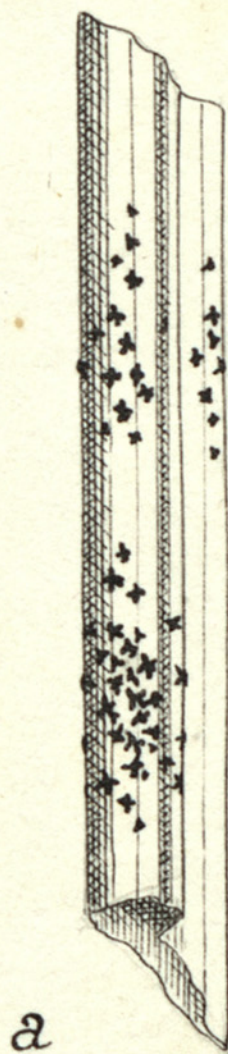




Fig. 3. Actinothecium caricicolum

a, frammento foliare di Carex con periteci; b, idem ingrandito; c, periteci; d, peritecio in deiscenza; e, sporule



4

---



38/0023-9

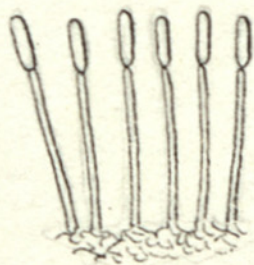
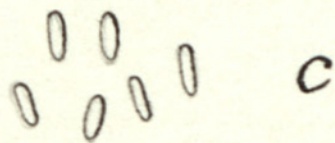
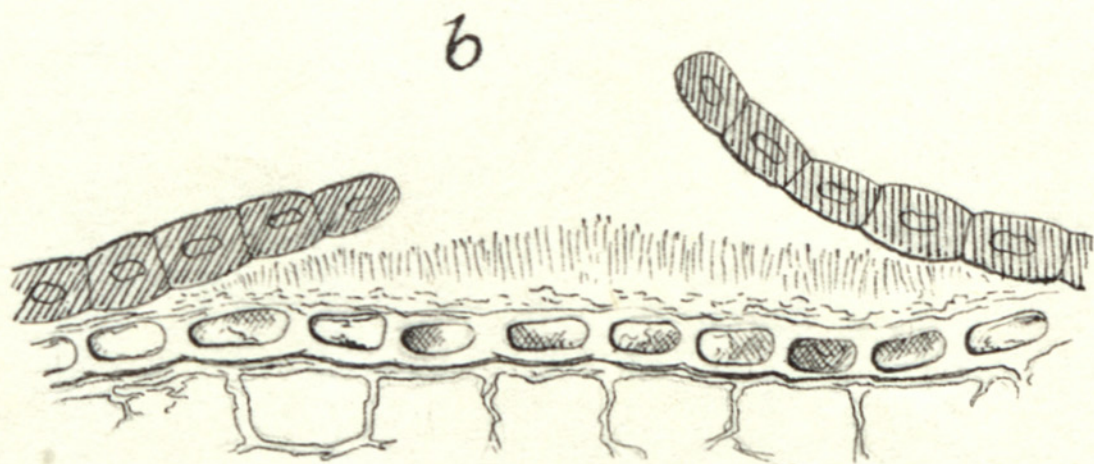




Fig. 4. Leptostroma Pinastri

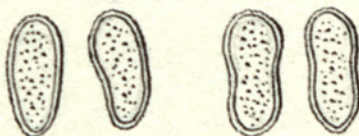
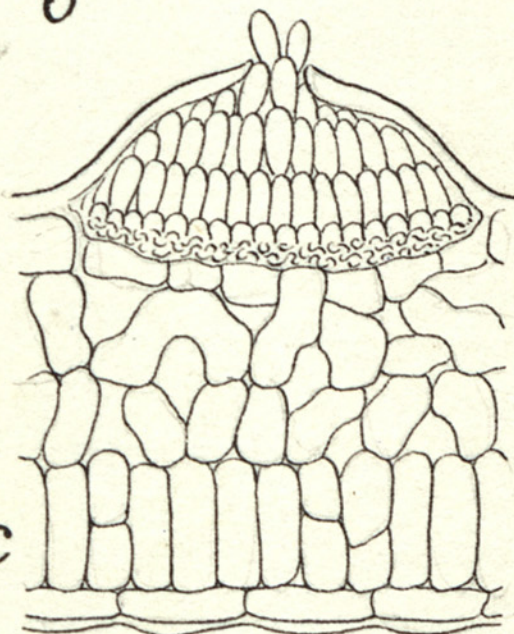
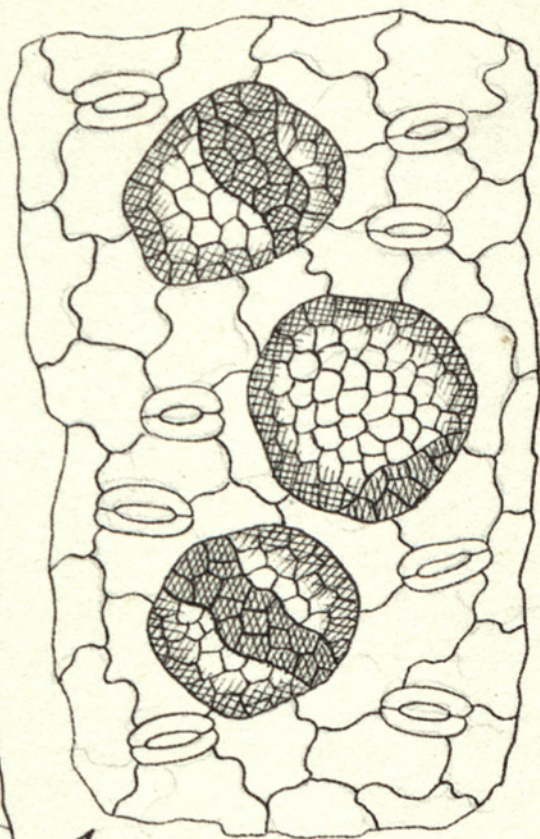
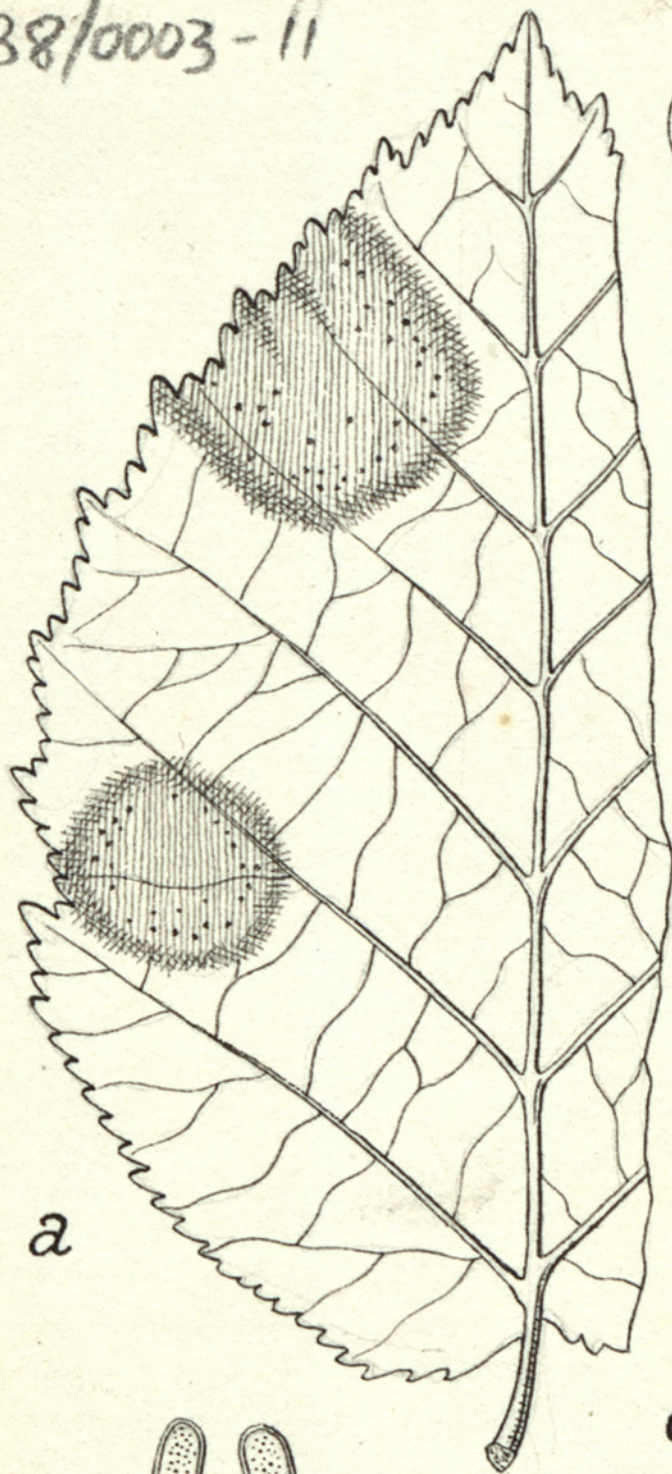
a, frammento di foglia di Pinus con periteci; b, peritecio sezionato; c, sporule; d, sporule con basidii.



5



38/0003-11



d

e



Fig. 5. Labrella Coryli

a, porzione di foglia di Corylus con periteci; b, periteci intieri ingranditi; c, peritecio sezionato; d, e, sporule.



6



38/0003-13

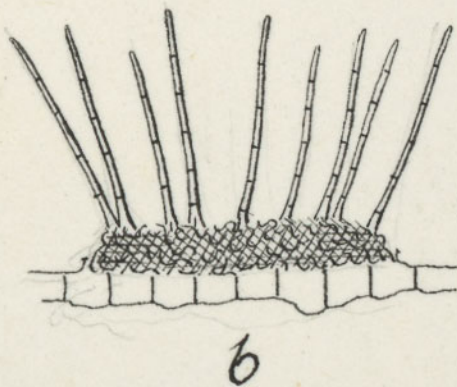
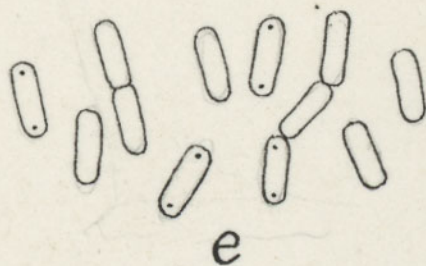
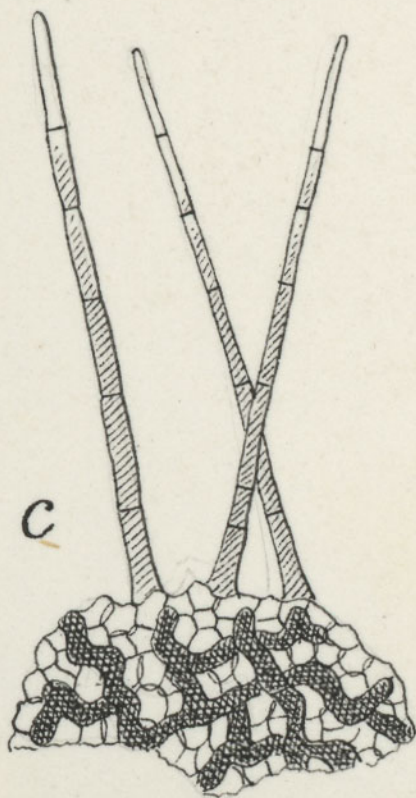
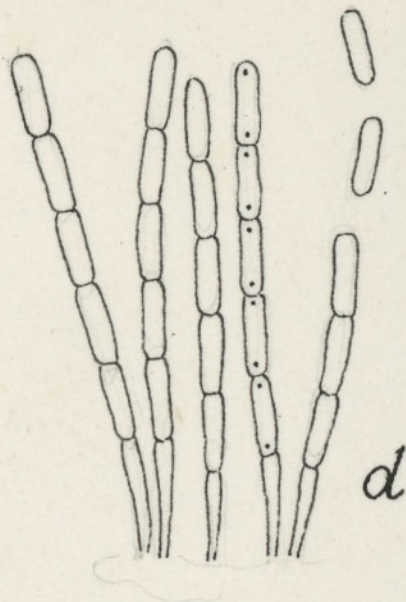
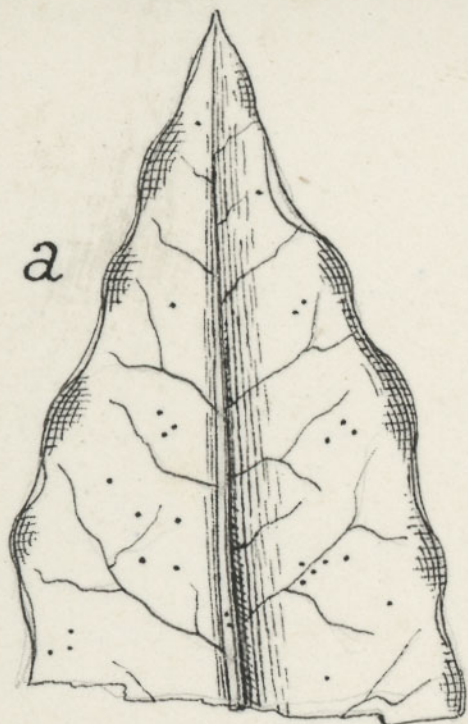




Fig. 6. Chaetopeltis laurina

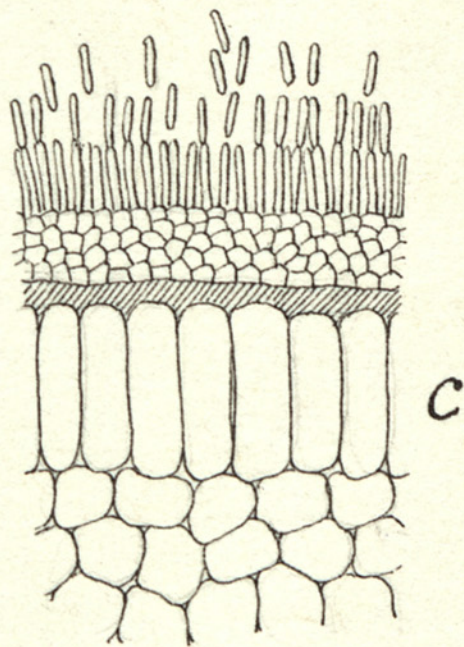
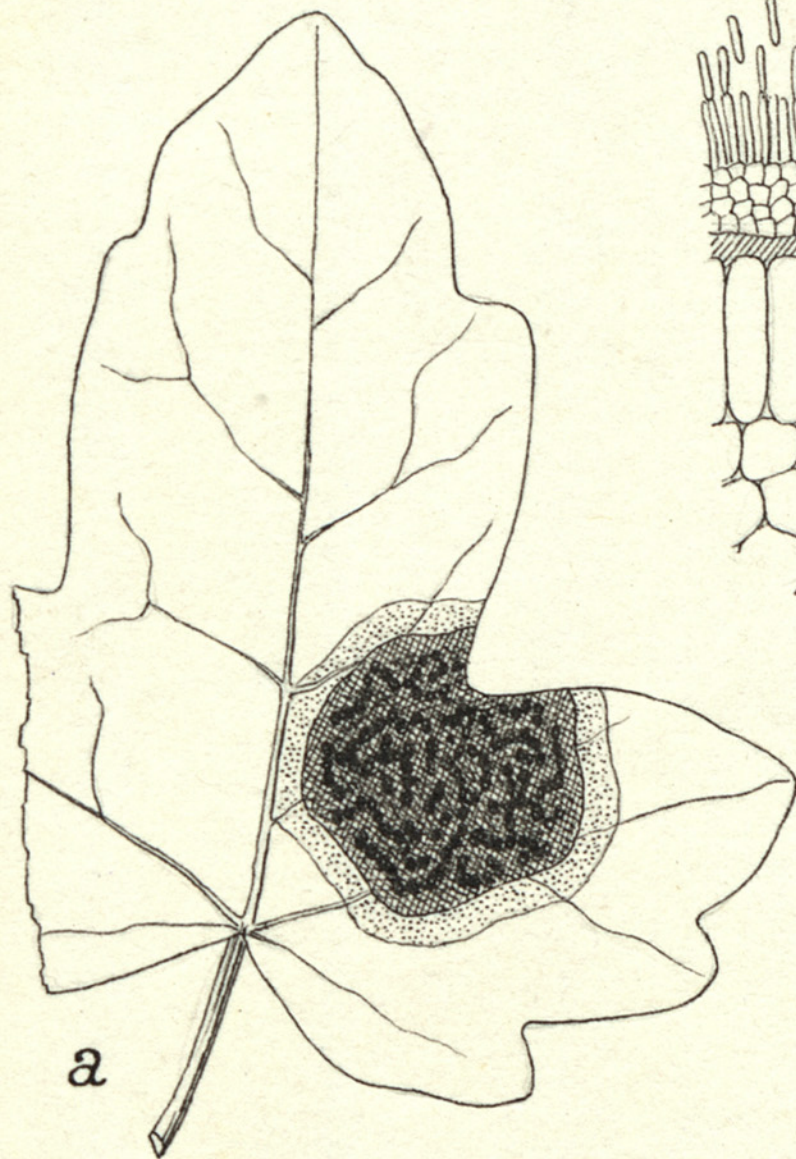
a, porzione foliare di foglia di Laurus  
con periteci; b, peritecio intiero in-  
grandito; c, frammento ingrandito di pe-  
ritecio; d, catenelle di spore; e, spo-  
re isolate.



7



38/0003-15

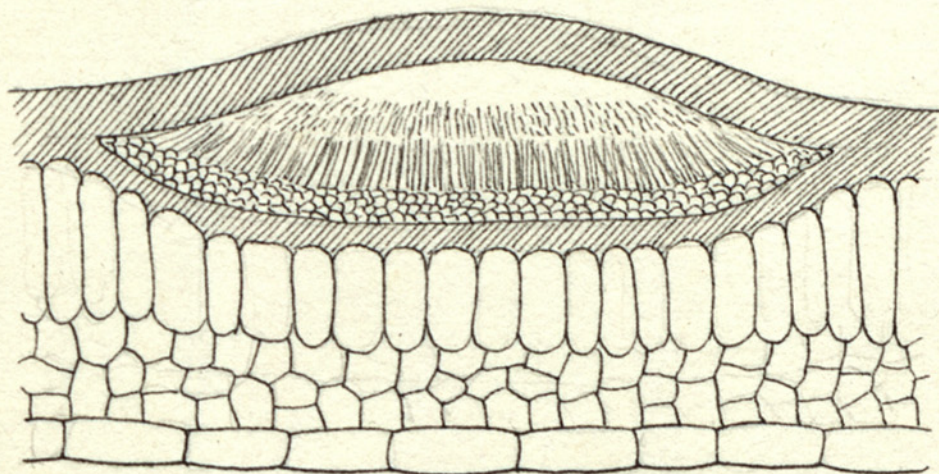


a

c

d

b



7



Fig. 7. Melasmia acerina

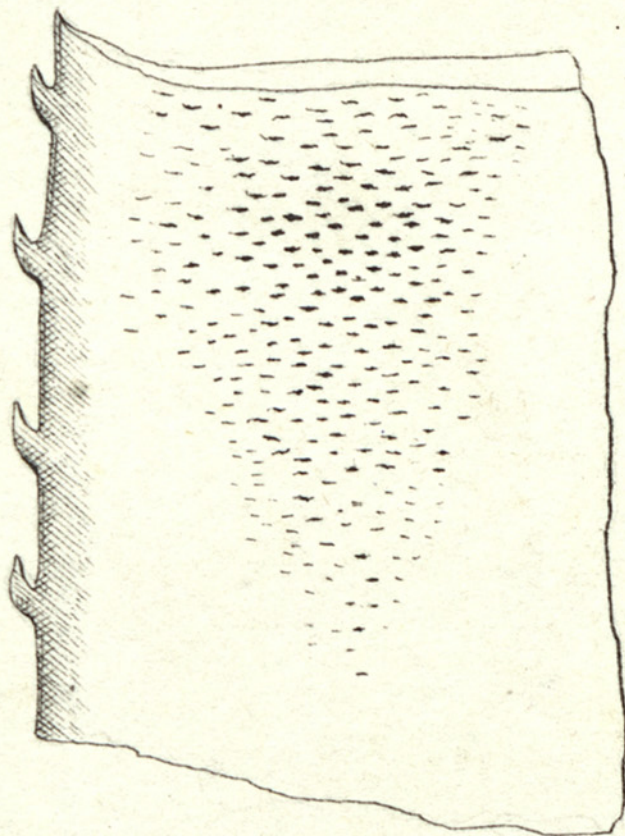
a, porzione di foglia di Acer con stroma;  
b, peritecio ingrandito sezionato; c, fram-  
mento di peritecio sezionato; d, sporule.



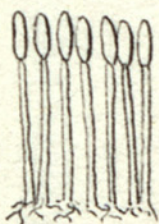
8



38/0003-17



a



c



b



Fig. 8. Pirostoma Farnetianum

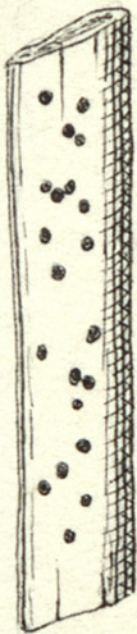
a, porzione di foglia di Pandanus con periteci; b, sporule; c, sporule con basidii.



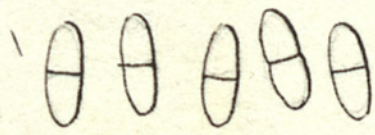
9



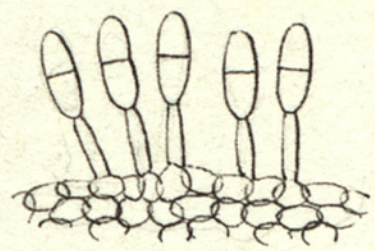
38/0003-103



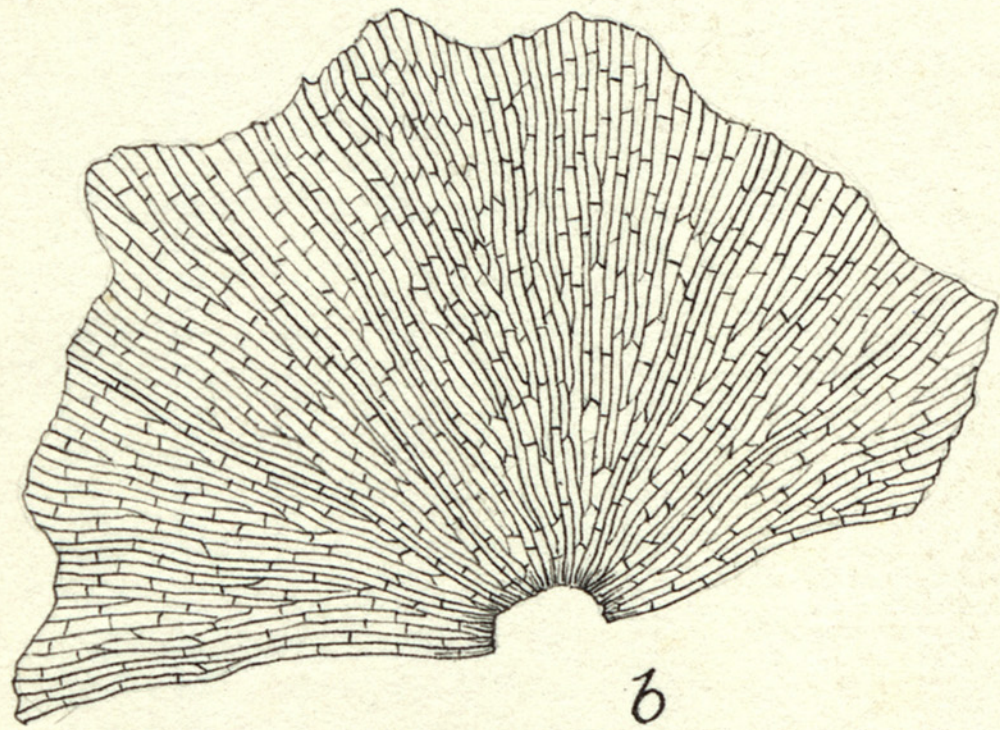
a



c



d



b



Fig. 9. Diplopettis Spartii

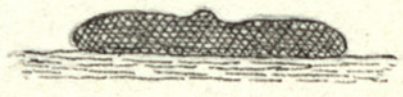
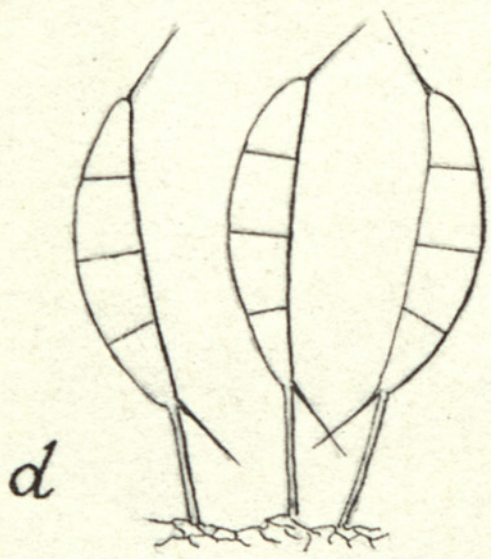
~~a~~ a, rametto di Spartium con periteci; b, porzione di peritecio ingrandita; c, sporule; d, sporule con basidii.



10

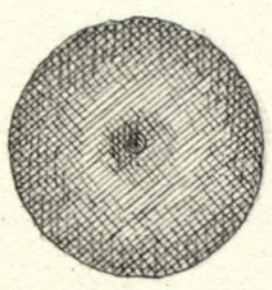


38/0003-21



d

b



c



a

10



Fig. 10. Discosia Artocreas

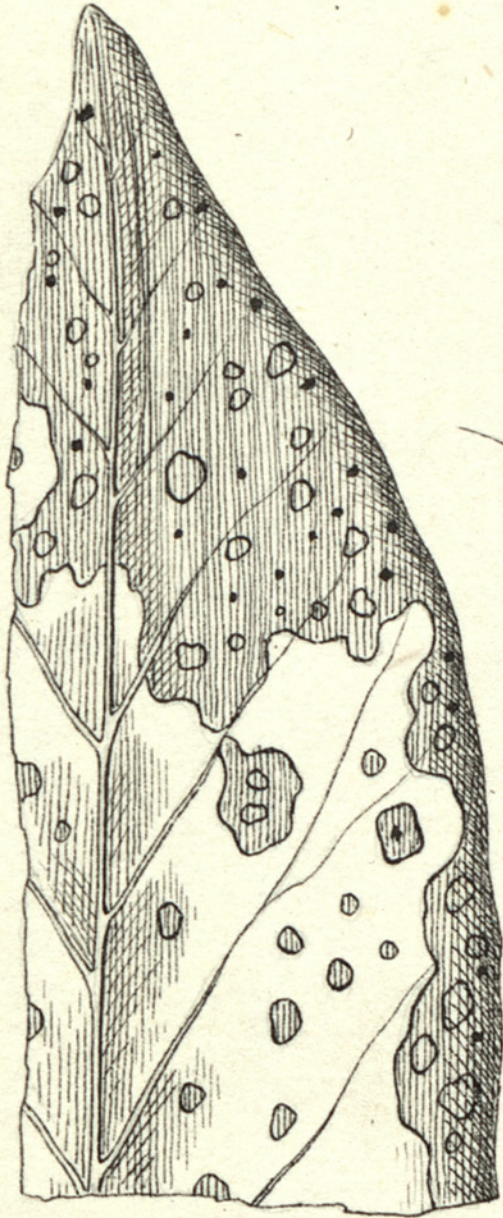
a, frammento foliare di Acer con periteci;  
b e c, periteci intieri ingranditi;  
d, sporule.



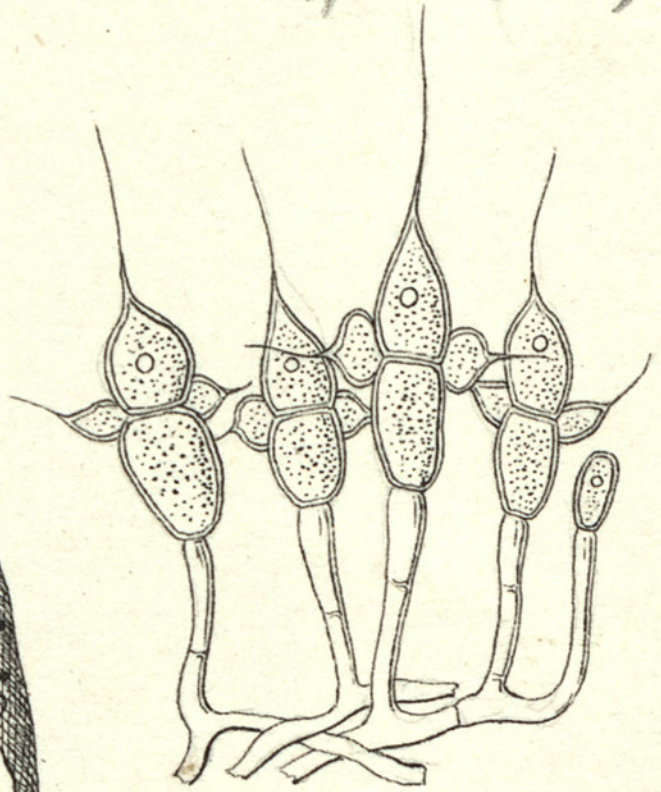
11



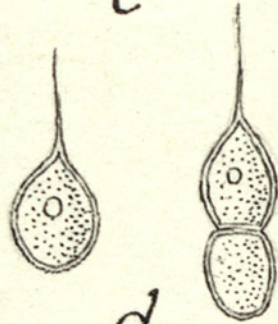
38/0003-23



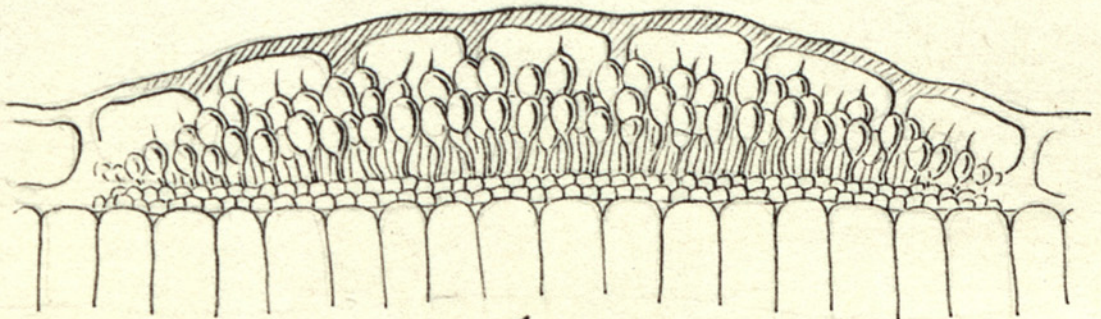
a



c



d



b



Fig. 11. Entomosporium maculatum

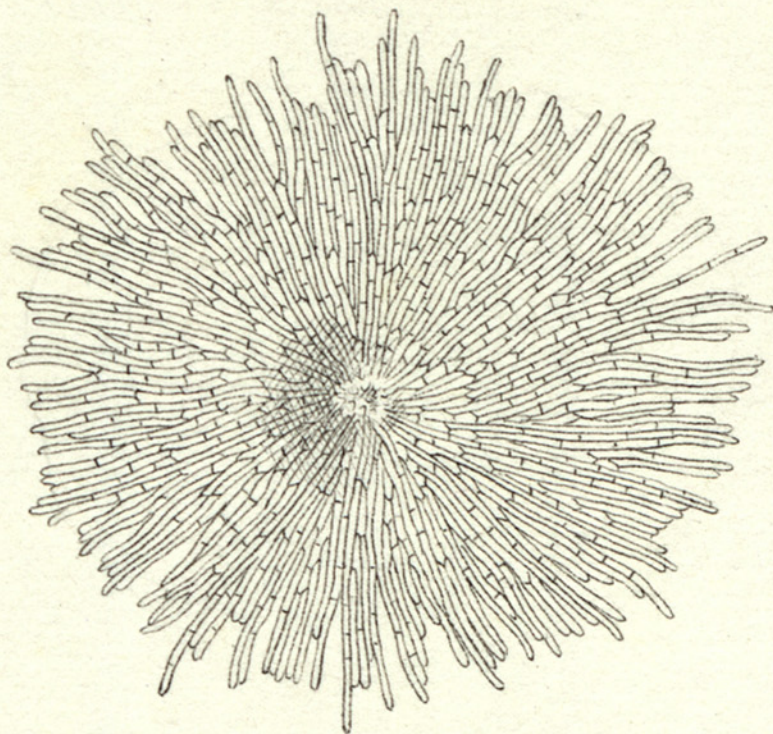
a, frammento di foglia invaso dal fungillo ;  
b, peritecio sezionato ; c, sporule ; d,  
segmenti di sporule.



12



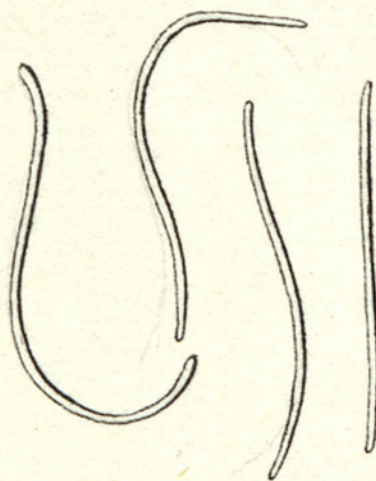
38/0003-25



b



a



c



N.  
Fig. 12. Actinothyrium Graminis

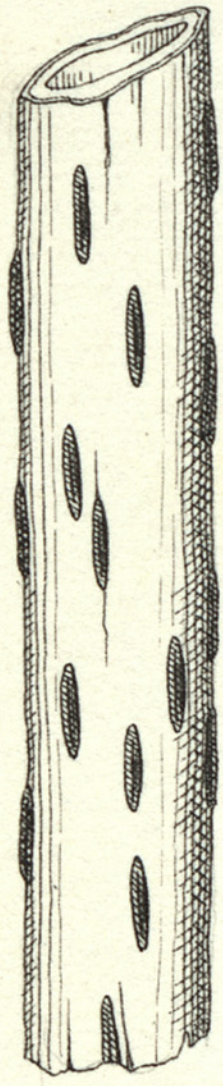
a, frammento foliare di Molinia con periteci; b, peritecio intiero ingrandito; c, spore.



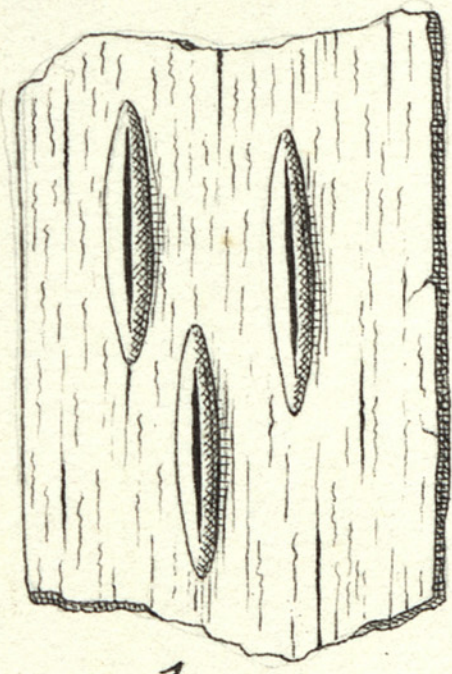
13

---

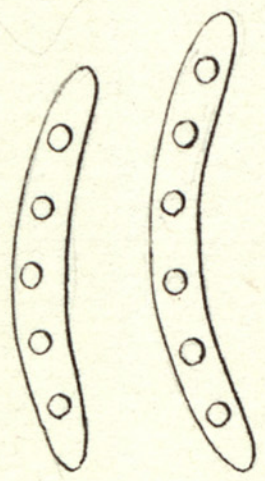




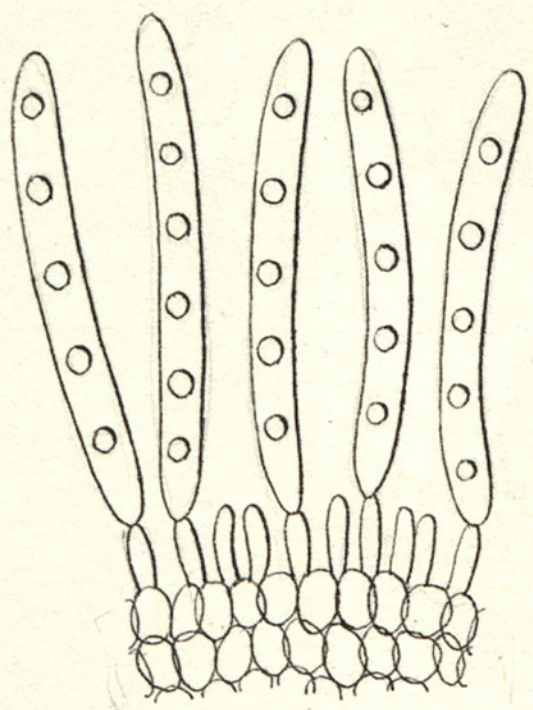
a



b



c



d



Fig. 13. Leptostromella hysteroioides

a, b, porzioni di cauli ingranditi, con periteci; c, sporule; d, sporule con basidii.

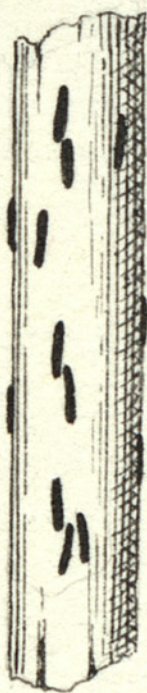


14

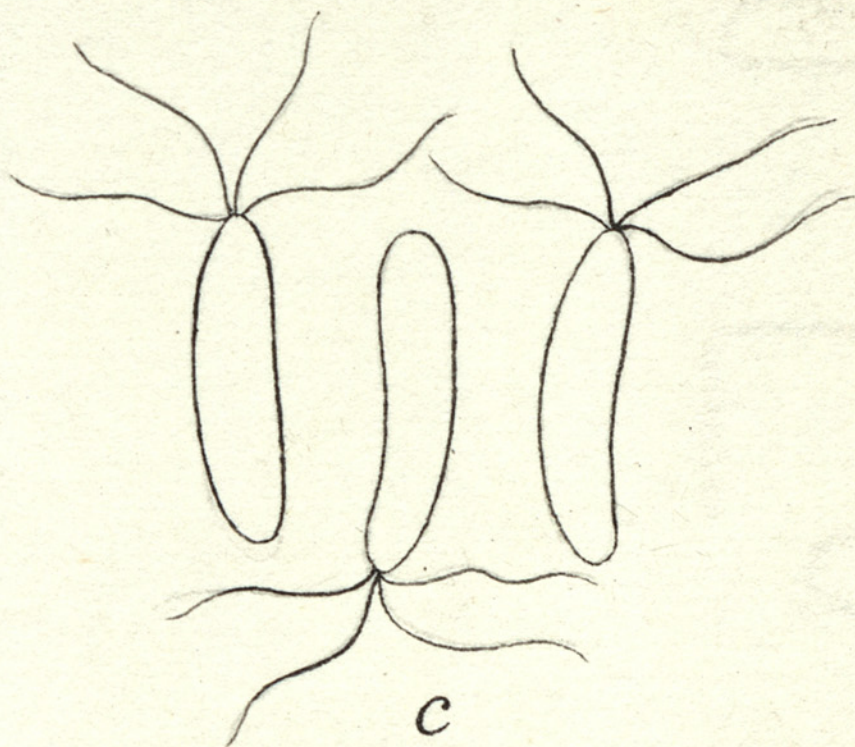
---



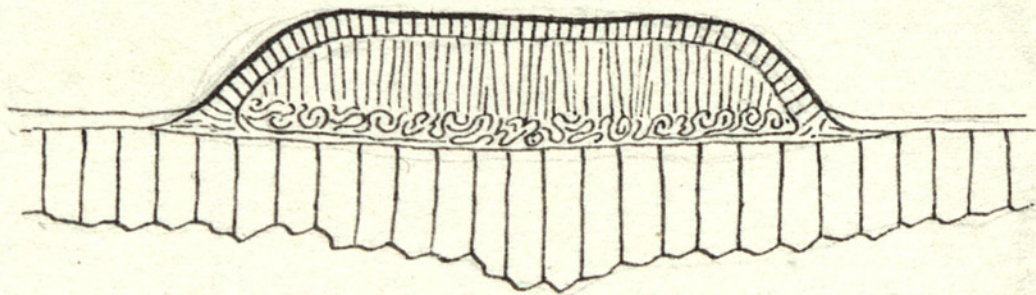
38/0003-29



a



c



b



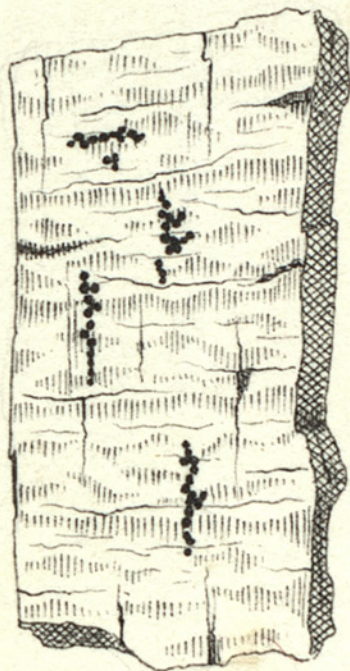
Fig. 14. Giulia tenuis

a, porzione di caule di Lepidium con  
periteci; b, peritecio sezionato; c, spo-  
rule.

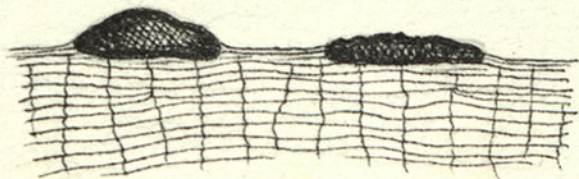


15

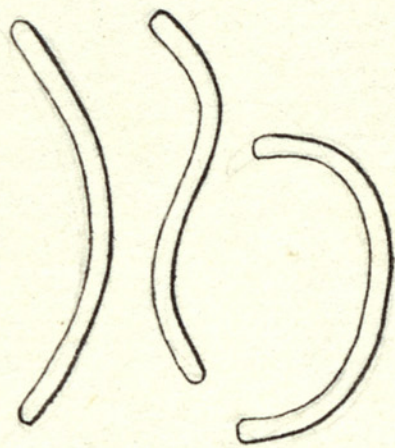




a



b



c



Fig. 15. Melophia ophiospora

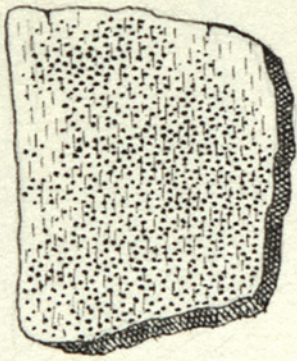
a, corteccia di Quercus con periteci;  
b, periteci intieri ingranditi; c, spo-  
rule.



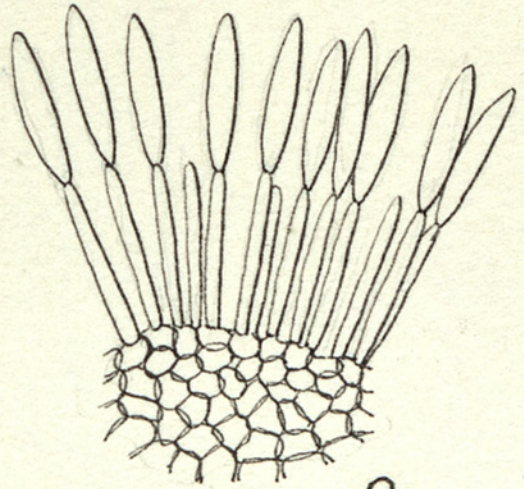
16



38/0003-33



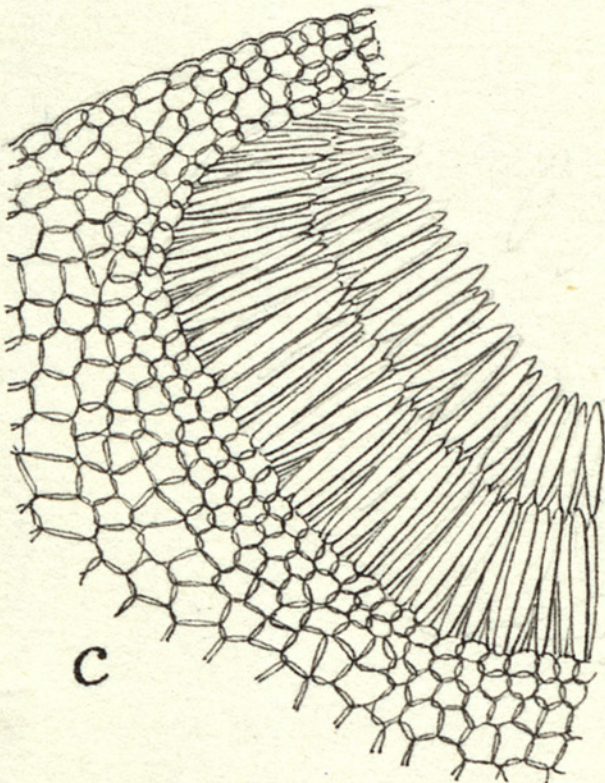
a



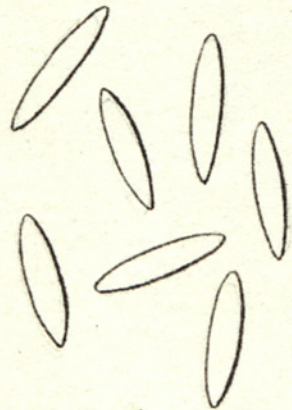
e



b



c



d



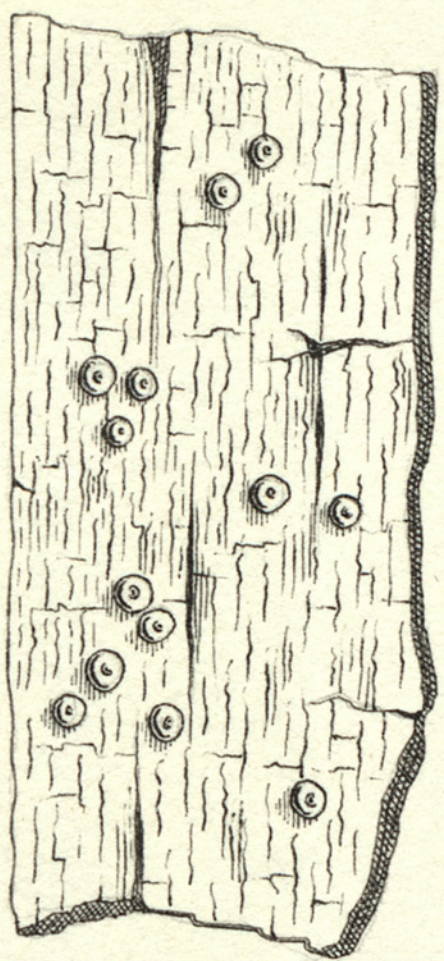
Fig. 16. Zythia Versoniana

a, porzione della corteccia del frutto di Punica con periteci; b, periteci ingranditi; c, frammento di peritecio ingr. sezionato; d, sporule; e, sporule con basidii.

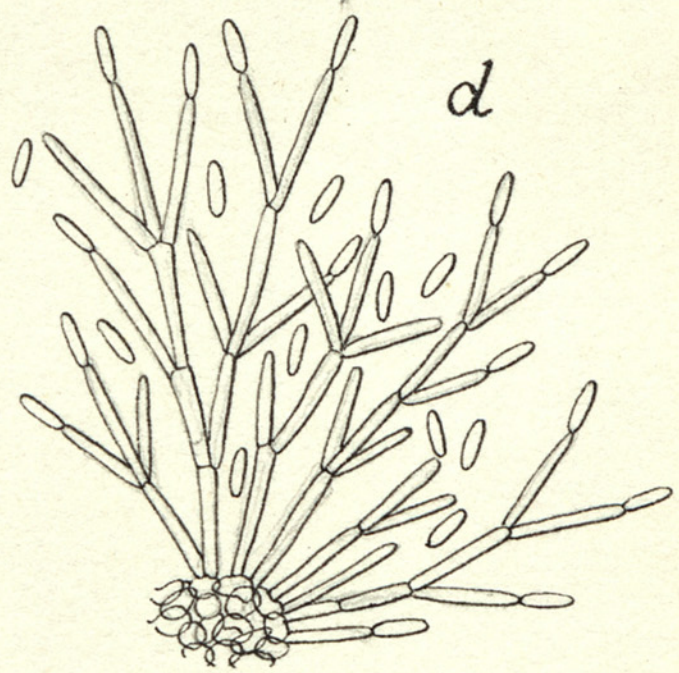


17

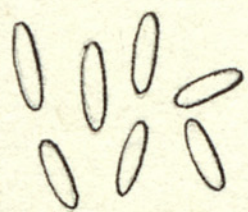




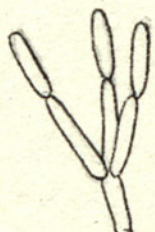
a



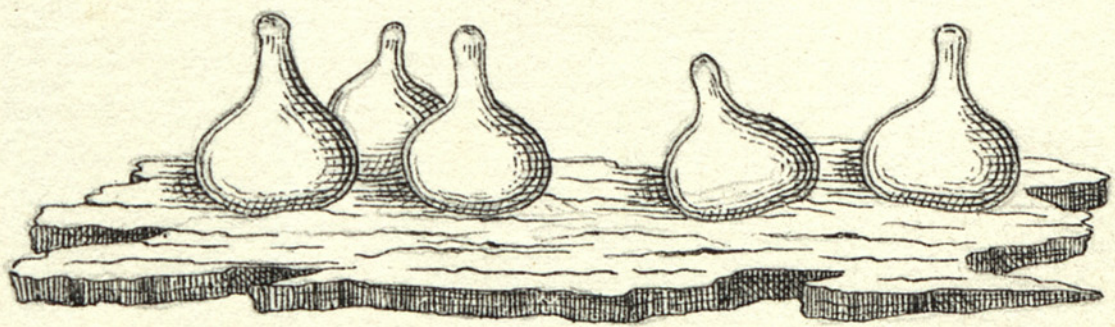
d



c



e



b



Fig. 17. Sphaeronaemella Mougeotii

a, porzione corticale del fusto di Hedera  
con periteci; b, periteci intieri ingran-  
diti; c, sporule; d, e, sporule con  
basidii.



18



38/0003-37

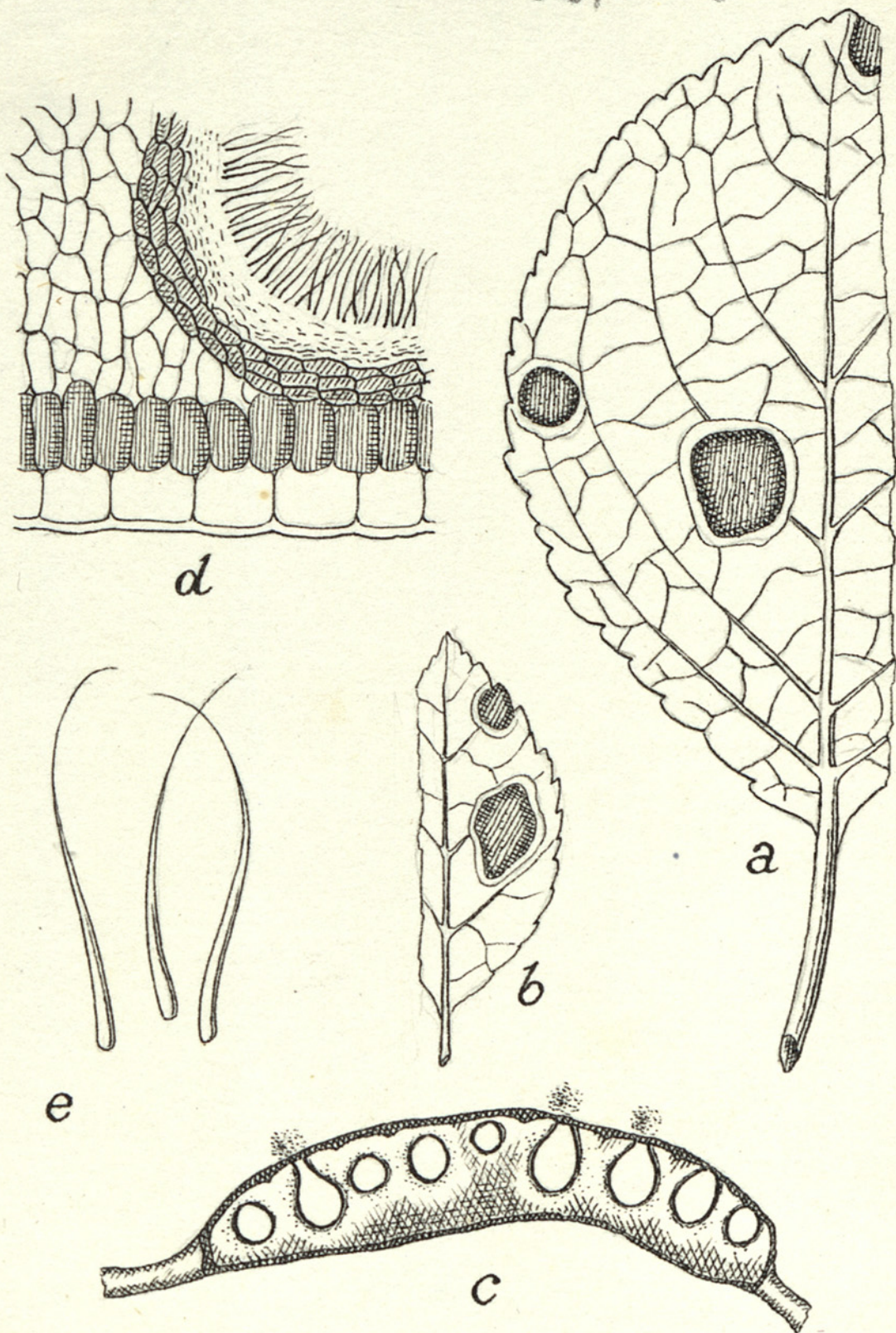




Fig. 18. Polystigmina rubra

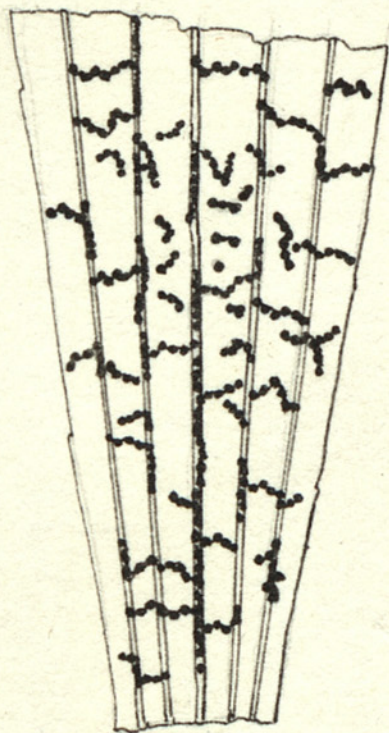
a, b, porzioni foliari di Prunus domestica  
e spinosa con stromi; c, stroma se-  
zionato; d, frammento ingrandito di  
peritecio, sezionato; e, sporule.



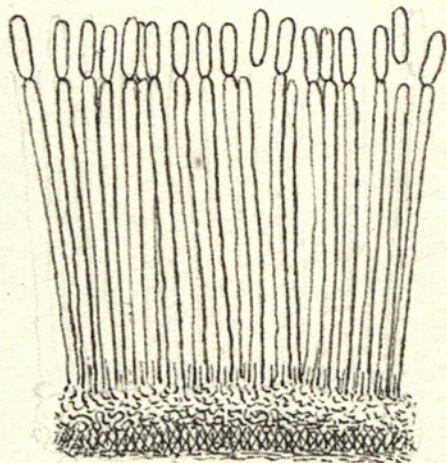
19



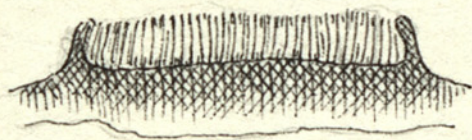
38/0003-39



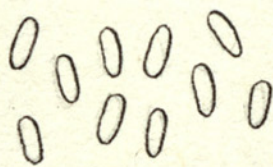
a



d



b



c



Fig. 19. Excipula nervisequa

a, porzione di foglia di Plantago con periteci; b, peritecio sezionato; c, spore; d, spore con basidi.



20

—

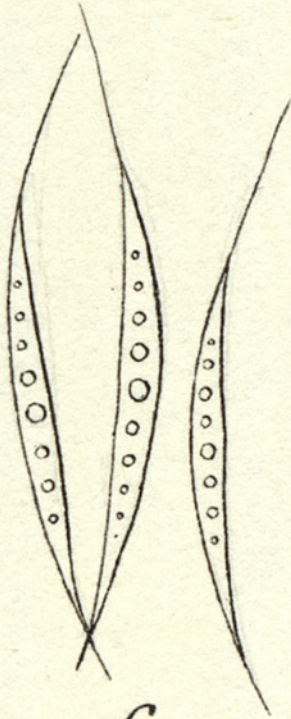
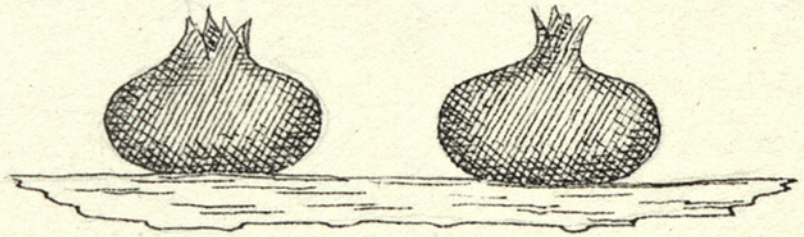


38/0003-41

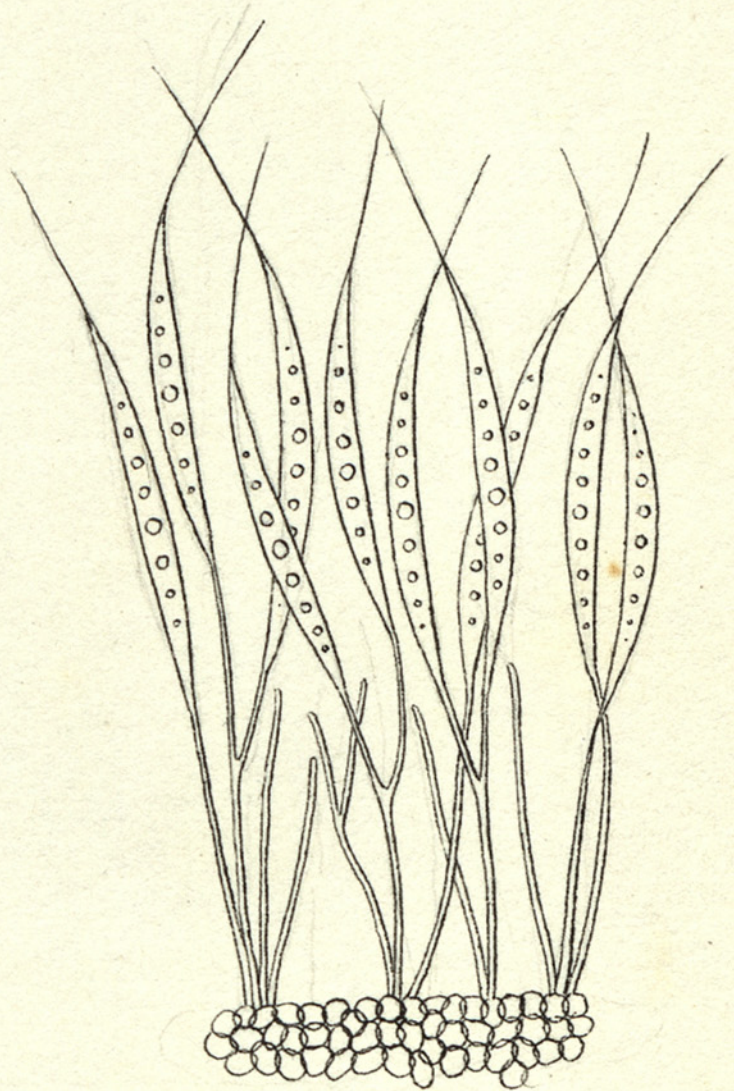


a

b



c



d

20



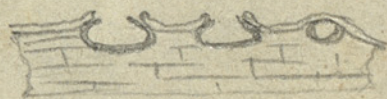
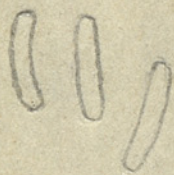
Fig. 20. Heteropatella lacera

a, caule di Bartsia con periteci; b, periteci interi ingranditi; c, sporule; d, sporule con basidii.



21

Dothichiza  
Torb. Sib.  
(manca figura)

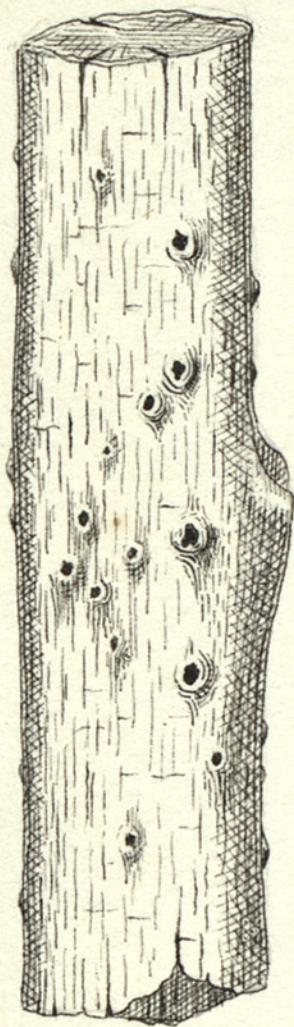




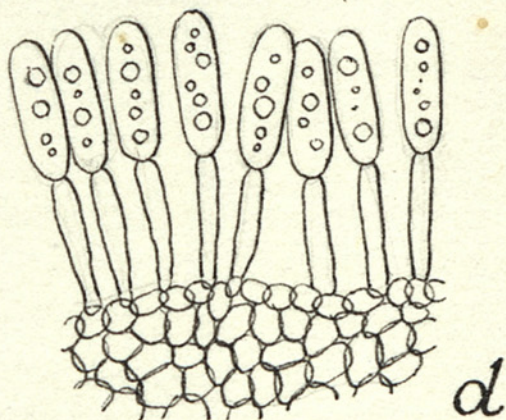
22



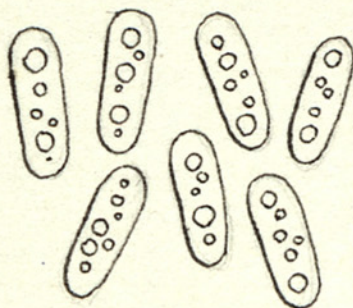
38/0003-44



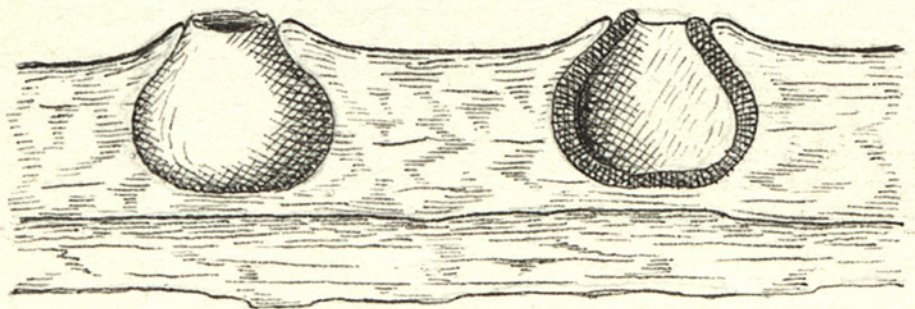
a



d



c



b

22



Fig. 22. Catinula turgida

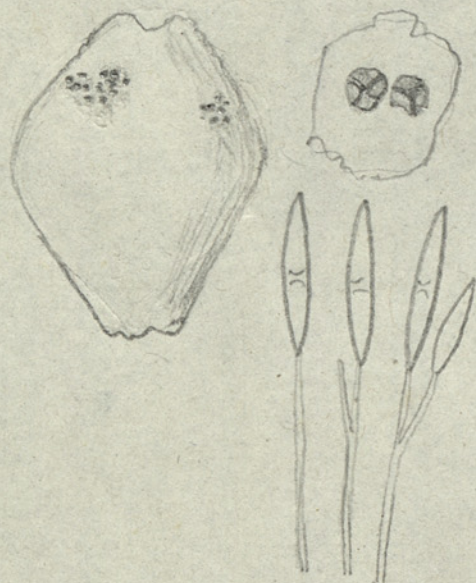
a, porzione di ramo di Corylus con periteci; b, periteci ingranditi; c, sporule; d, sporule con basidii.



23

Sporonema  
strobilum Desm.

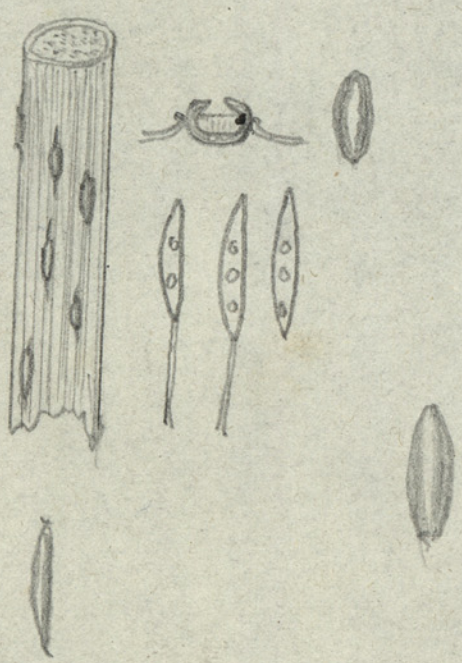
(Manca figura)





24

Pleococcum  
Holoschoeni Pass.  
(Manca figura)

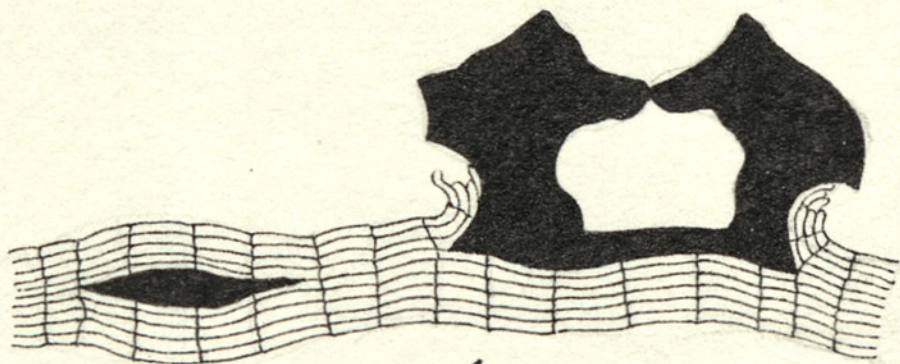




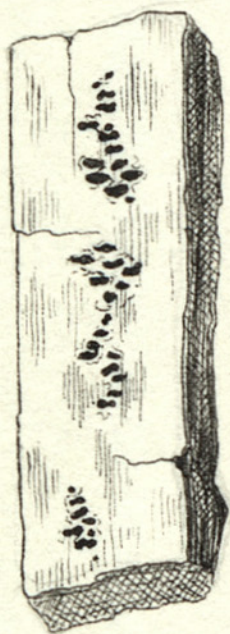
25



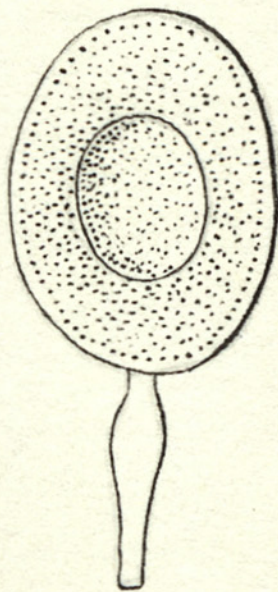
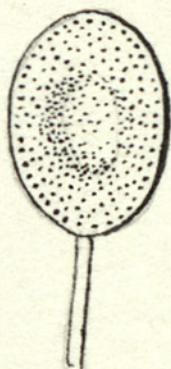
38/0003-48



b



a



c



Fig. 25. Psilospora Quercus

a, frammento di scorza di Quercus  
con periteci; sezione b, periteci sezio-  
nati; c, spore a due diversi stadi  
di maturità.



26

Amerosporium  
Nemipennis Pas.  
(Manca figura)



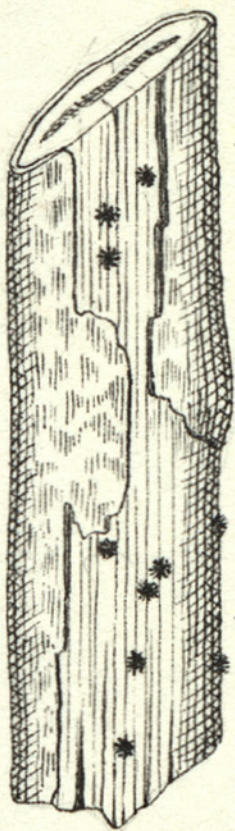


27

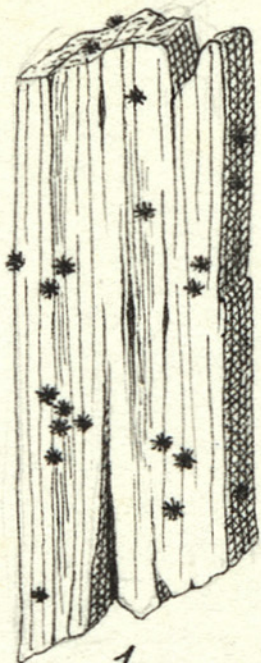
---



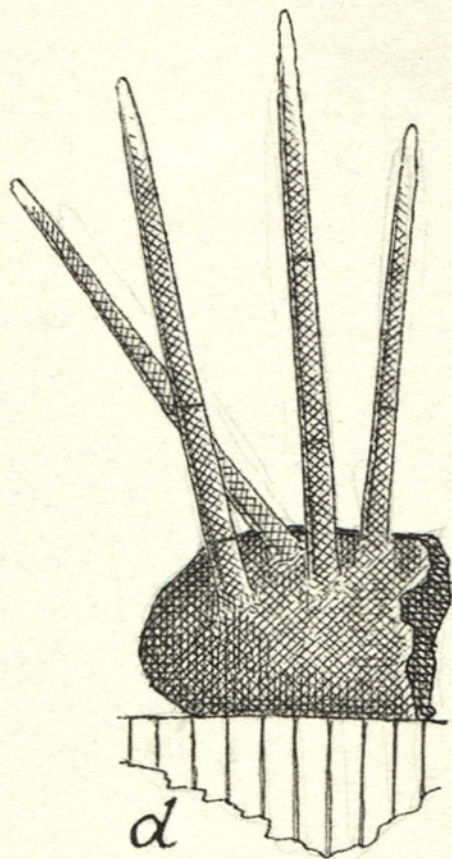
38/0003-51



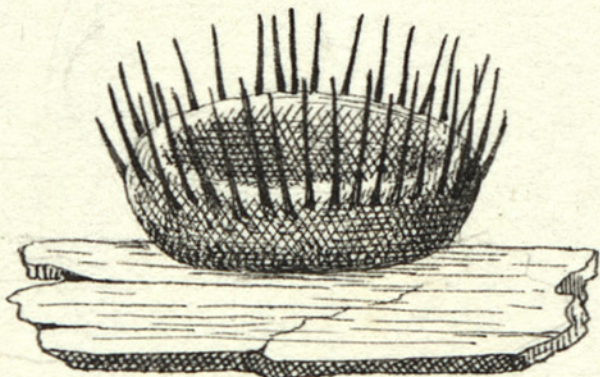
a



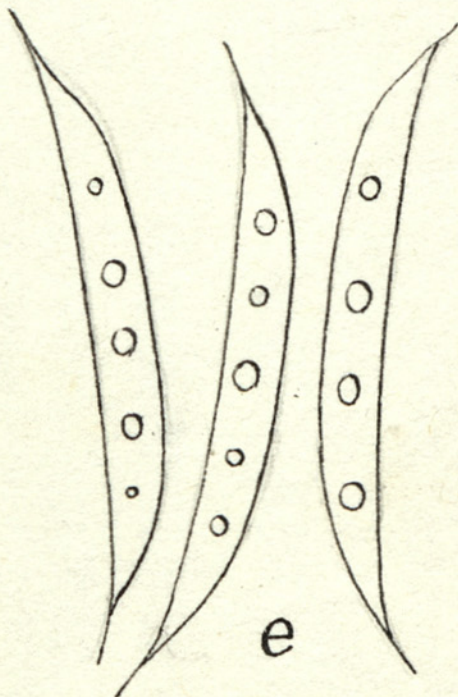
b



d



c



e



Fig. 27. Dinemaspodium hispidulum

a, b, frammenti legnosi con periteci ;  
c, peritecio intero ingrandito ; d, por-  
zione di peritecio ingr. ; e, sporule.



28

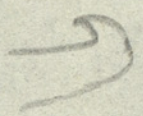
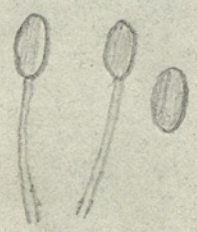
Polynema

(Manca figura)



29

Phaeodiscula  
Celotti Cub.  
(Manca figura)





30



Fig. 30. Discella carbonacea

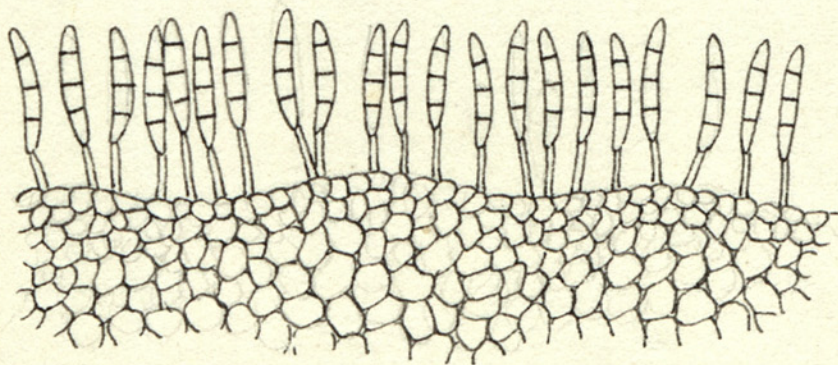
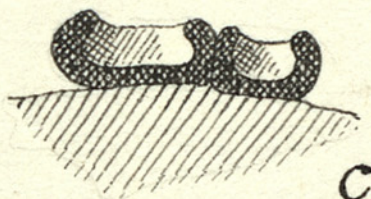
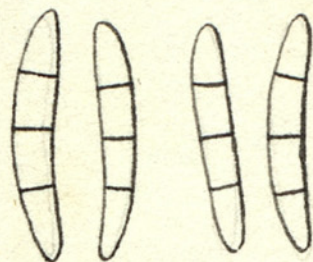
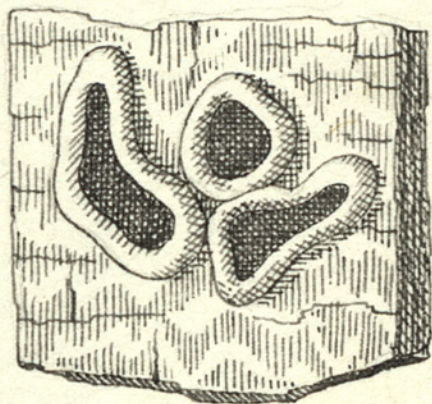
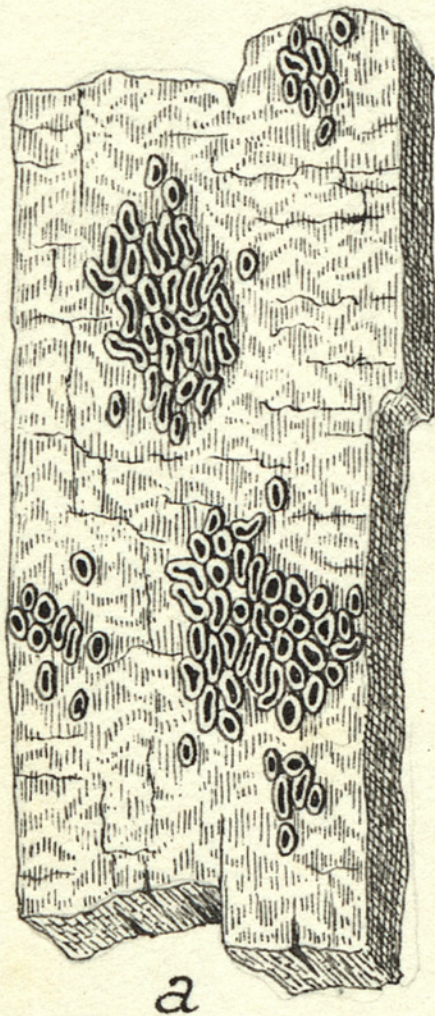
a, rametto porzione di rametto di Salix  
con periteci; b, peritecio sezionato, in-  
grandito; c, sporule; d, sporule con  
basidi.



31

---







<sup>4</sup>  
Fig. 31. Pilidium fuliginosus

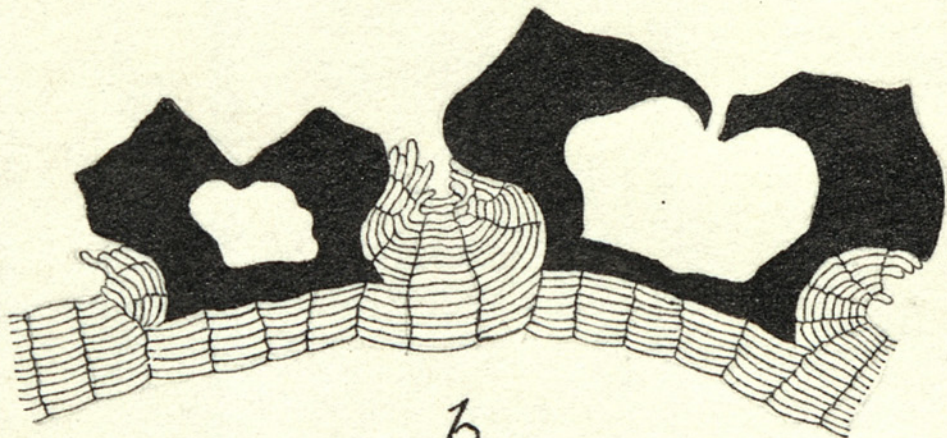
a, b, frammenti più o meno ingranditi  
di corteccia di Populus con periteci; ~~t~~  
c, periteci sezionati; d, sporule; e,  
sporule con basidi.



32



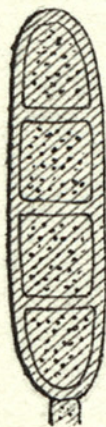
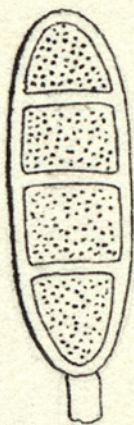
38/0003-58



b



a



c



Fig. 32. Dichaenopsis Notarisii

a, frammento di scorza di Quercus  
con periteci; b, periteci sezionati;  
c, sporule a due diversi stadi di  
maturità.