

No. 8.

# Delle Orchidi

BIBL. R. ORTO  
BOTANICO-PADOVA

Ar.

7-

1868

R. ISTITUTO BOTANICO DI PADOVA

Sala .....

Palco .....

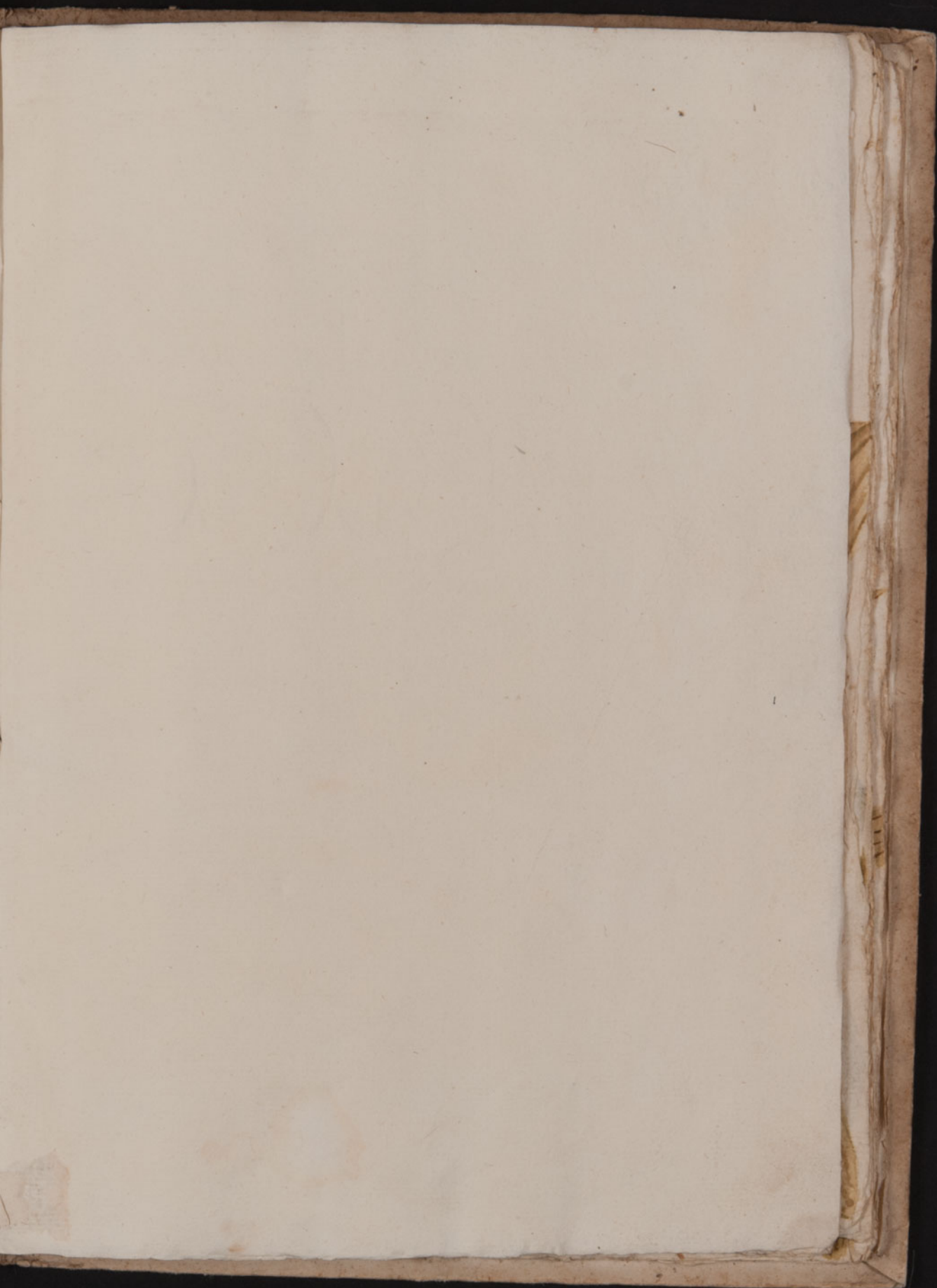
N. Inv. ....

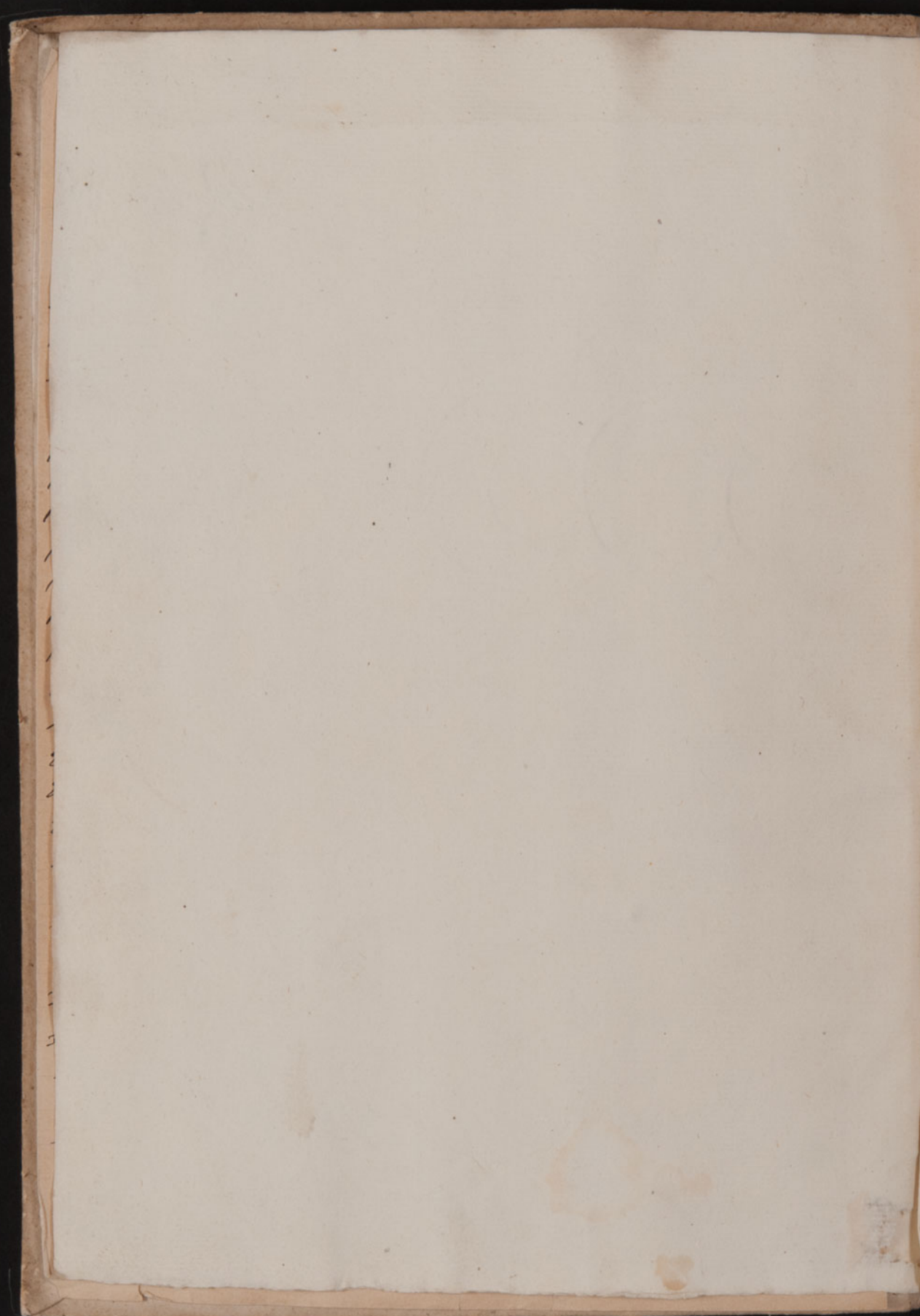
BIBL. R. ORTO  
BOTANICO-PADOVA

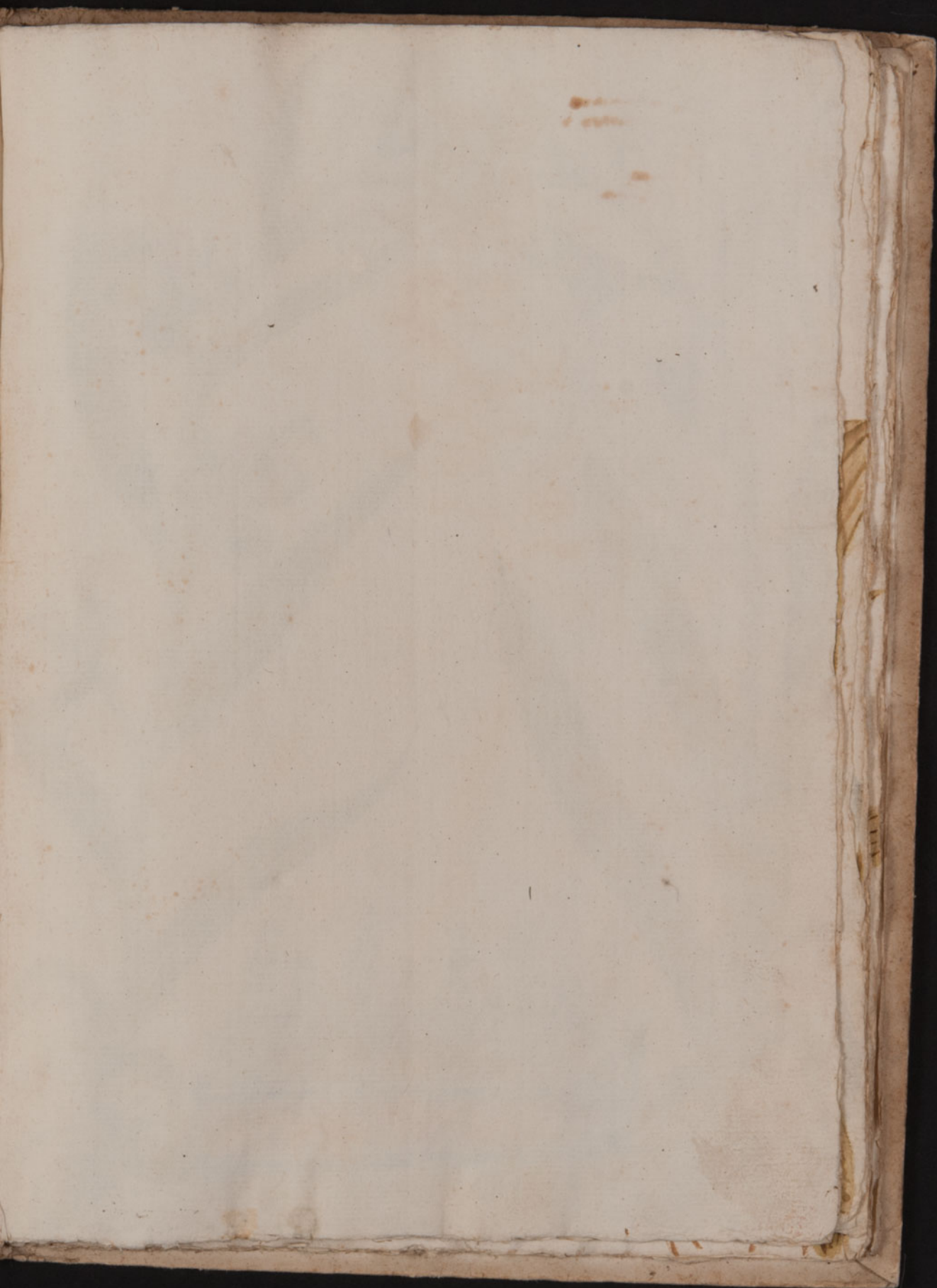
Ar.

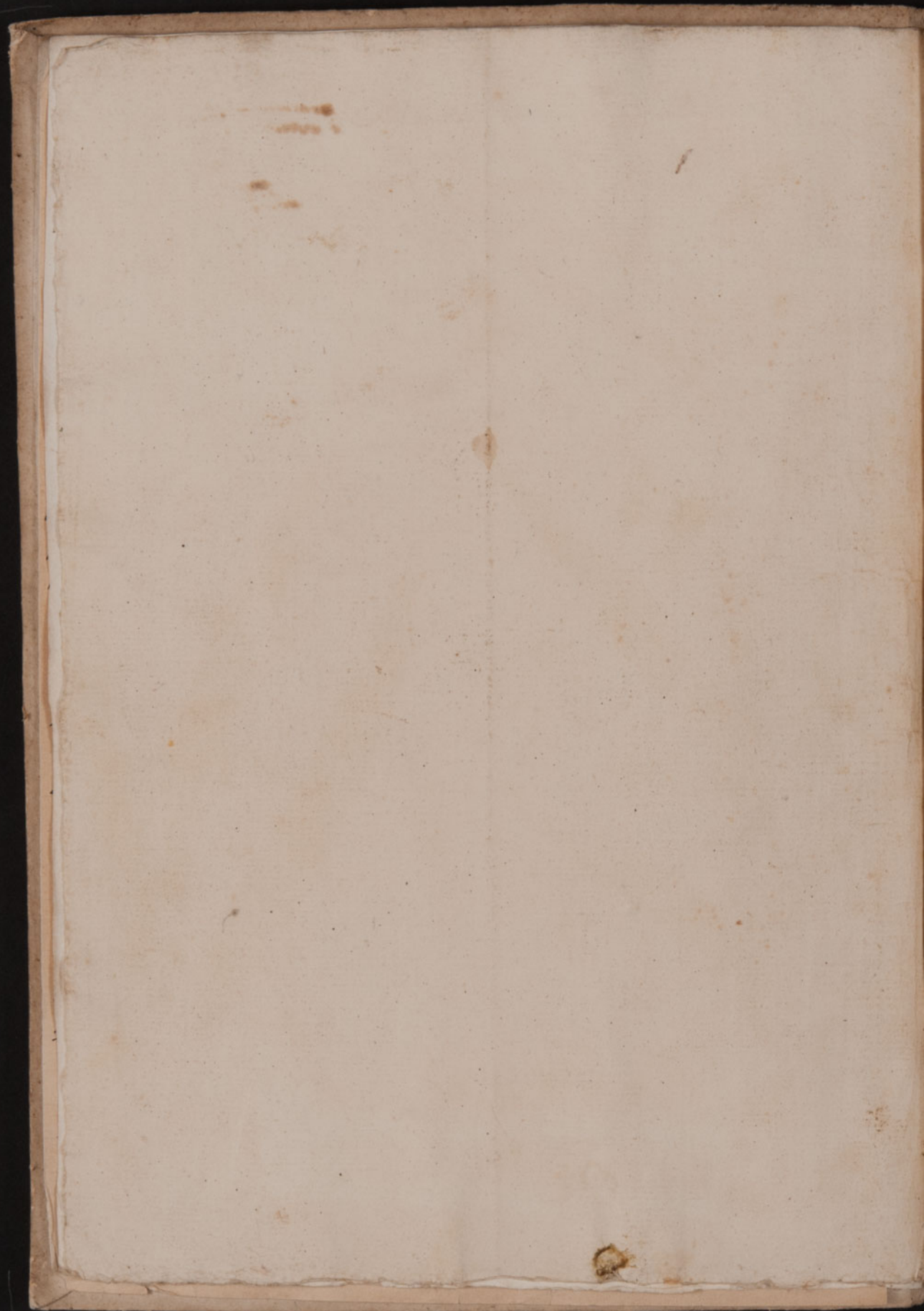
7 - 1

n° 1262















1. *Orchis magna*, *Latifolia*, *galea fusca*, uel niglicante J. B. n. 789.
2. *Orchis Strateumatica*, *minor* J. B. n. 780
3. *Orchis Strateumatica*, *minor alba*; facili *Orchis Strateumatica minor* Per. Bobart.
4. *Orchis montana*, *purpurea*, *odorata* C. B. Pin.
5. *Orchis Morio*, *foliis sessilibus maculatis* C. B. Pin.
6. *Orchis foliis sessilibus non maculatis* C. B. Pin.
7. *Orchis altonis*, *mas*, *foliis maculatis flore lacteo* C. B. Pin.
8. *Orchis Pannonica* 4<sup>a</sup> *Clasij*
9. *Orchis odore Hirco*, *Longiore angustioreque folio* C. B. Pin.
10. *Orchis barbata*, *odore Hirco*, *breuere*, *latioreque folio* C. B. Pin.
11. *Orchis flore nudi Romini effigie* *explantans*, *mas* C. B.
12. *Orchis Cercopithecum* *explantans* *oblegis*
13. *Orchis flore simia* *referens* C. B.
14. *Orchis maritima* *flore hiantes pheniceo*, *nobilis*.
15. *Eadem alba*.
16. *Orchis montana Italica*, *flore ferruginea*, *Lingua oblonga* C. B. Pin. 014.
17. *Orchis montana Italica angustifolia*, et ~~seu~~ *maculata*, *flore ferruginea*, *Lingua oblonga*.
18. *Orchis montana Italica*, *Lingua oblonga altera* C. B. Pin. 014.
19. *Orchis montana Italica*, *media*, *Lingua oblonga alba*.
20. *Orchis Fucis* *flore*, *foliis superioribus purpurascensibus*, *Lingua ferruginea*, *cum cauda retro reflexa*.
21. *Eadem foliis superioribus candidis*.
22. *Orchis Fucis* *referens*, *foliolis superioribus purpurascensibus*, *Lingua ferruginea* *cum cauda ante reflexa*.
23. *Eadem foliolis superioribus albis*.



124. *Orchis angustifolia palustris*, floribus purpureo, nobis  
 125. *Eadem* floribus caeruleo.
126. *Orchis Ananij* corpus caeruleum nigrum foliis superioribus  
 albidis, nobis.
127. *Orchis Papilionem* caeruleum foliis maculatis C. B. Pin. 104
128. *Orchis Fucæ* caeruleum, foliis superioribus partim viridibus  
 et partim obsolete viridibus et crispis. An *Orchis Fucæ* caeruleum  
 floribus viridibus C. B. Pin. 93.
129. *Orchis Fucæ* caeruleum, foliis superioribus purpureo centibus
130. *Orchis Morio* femina C. B. Pin. *Orchis* minor purpurea, eadem alij  
 viridibus J. B.
131. *Orchis Morio* femina C. B. Pin. *Orchis* minor dilute purpurea  
 cum alij viridibus J. B.
132. *Orchis Morio* femina floribus candido, eadem alij viridibus.
133. *Orchis Morio* femina floribus albis.
134. *Orchis Myodes* floris fusco, sicut *Carabaceus* ex plinij Bleyer  
 Cent: I. 201. *Orchis Carabaceus* ex plinij J. B. Tab. 4.  
 Fig. 1.
135. *Orchis* floris olivaceo corpus caeruleum, minor lingua purpurea  
 nigra, foliis superioribus partim subviridibus et partim  
 obsolete viridibus. An *Orchis Musci* corpus caeruleum minor, eadem  
 galba et alij herbis C. B. Pin. 103.
136. *Orchis Fucæ* caeruleum coloris subviridibus C. B. Pin. *Orchis* sicut  
*Festucula* *Sphegodes* hirsuta floribus J. B.
137. *Cynorchis* *Spica* compacta C. B. Pin.
138. *Orchis Fucæ* caeruleum foliis superioribus partim viridibus,  
 partim maculatis lingua nigra purpurea.
139. *Orchis Fucæ* caeruleum foliis superioribus viridibus, lin-  
 gua alba purpurea.



Forte *Samolium* flos herbaceo, intus nodus nihil  
candicante L. B.

02. *Gadins* flos dilute purpureo, Lingua partim nigra, partim  
alba, et retro reflexa.
03. *Simodorum Austriacum Clusij*.
04. *Ephris bifolia* C. B. Pin.
05. *Nidus avis* fugd. 1073. *Orchis abortiva fusca* C. B. Pin.









5

6













13



15



14



15



17



16



17





20

21



122

123





125



127





30

31









35



37



30

39



8



42  
~~44~~



43  
~~45~~



44

49





49







51

52



93



94



55





57



50



59



60

6i





62



672

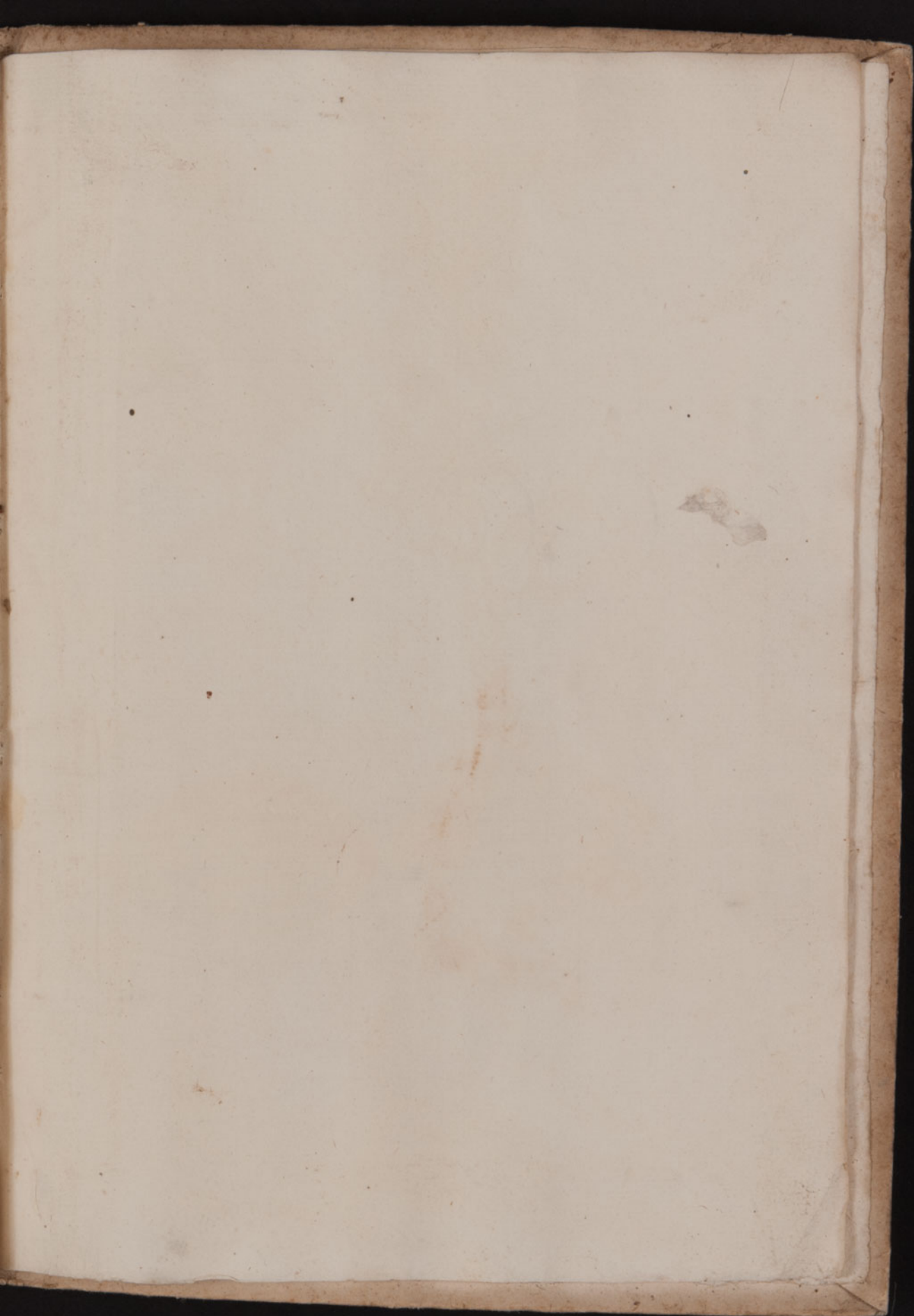


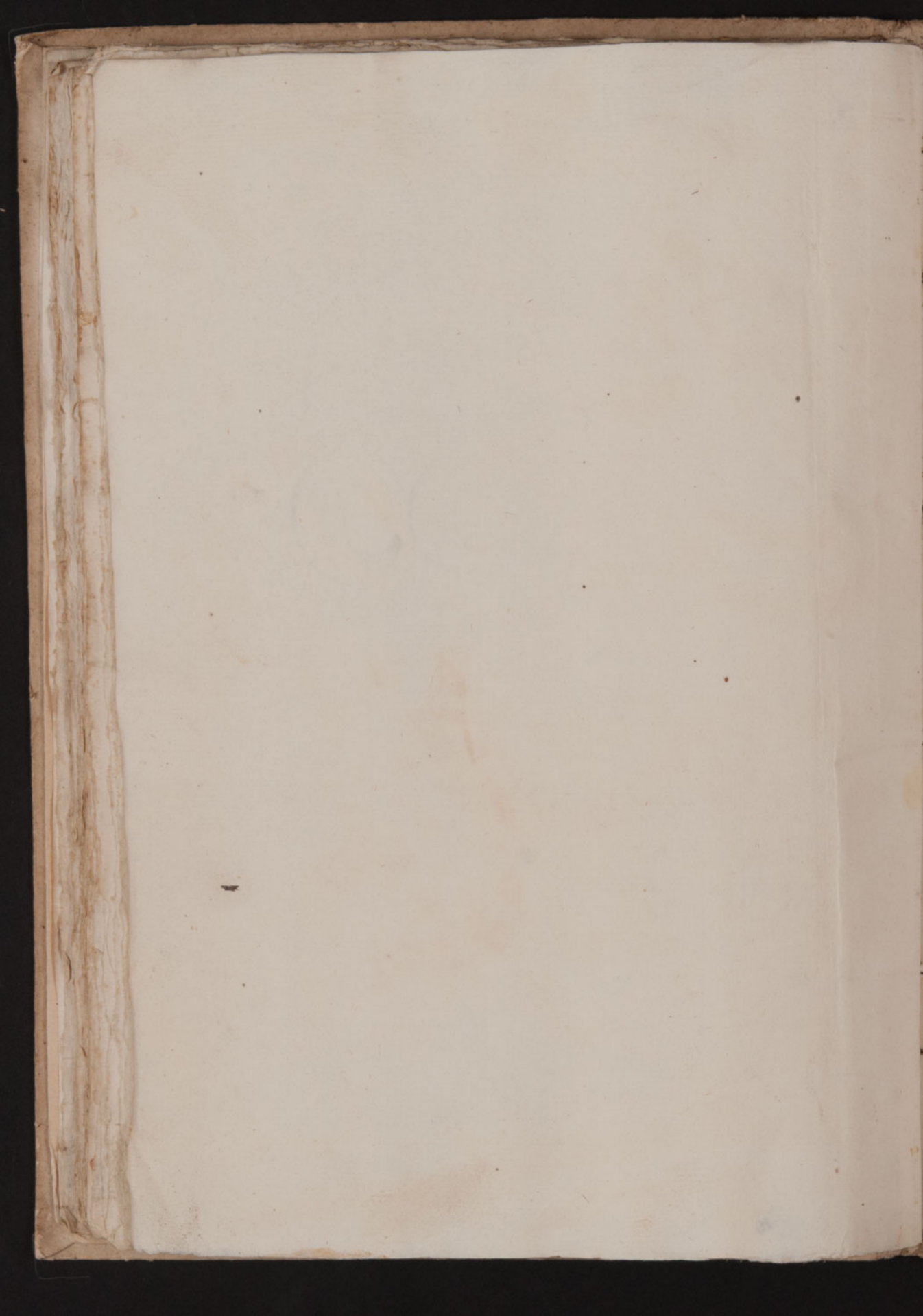
64-

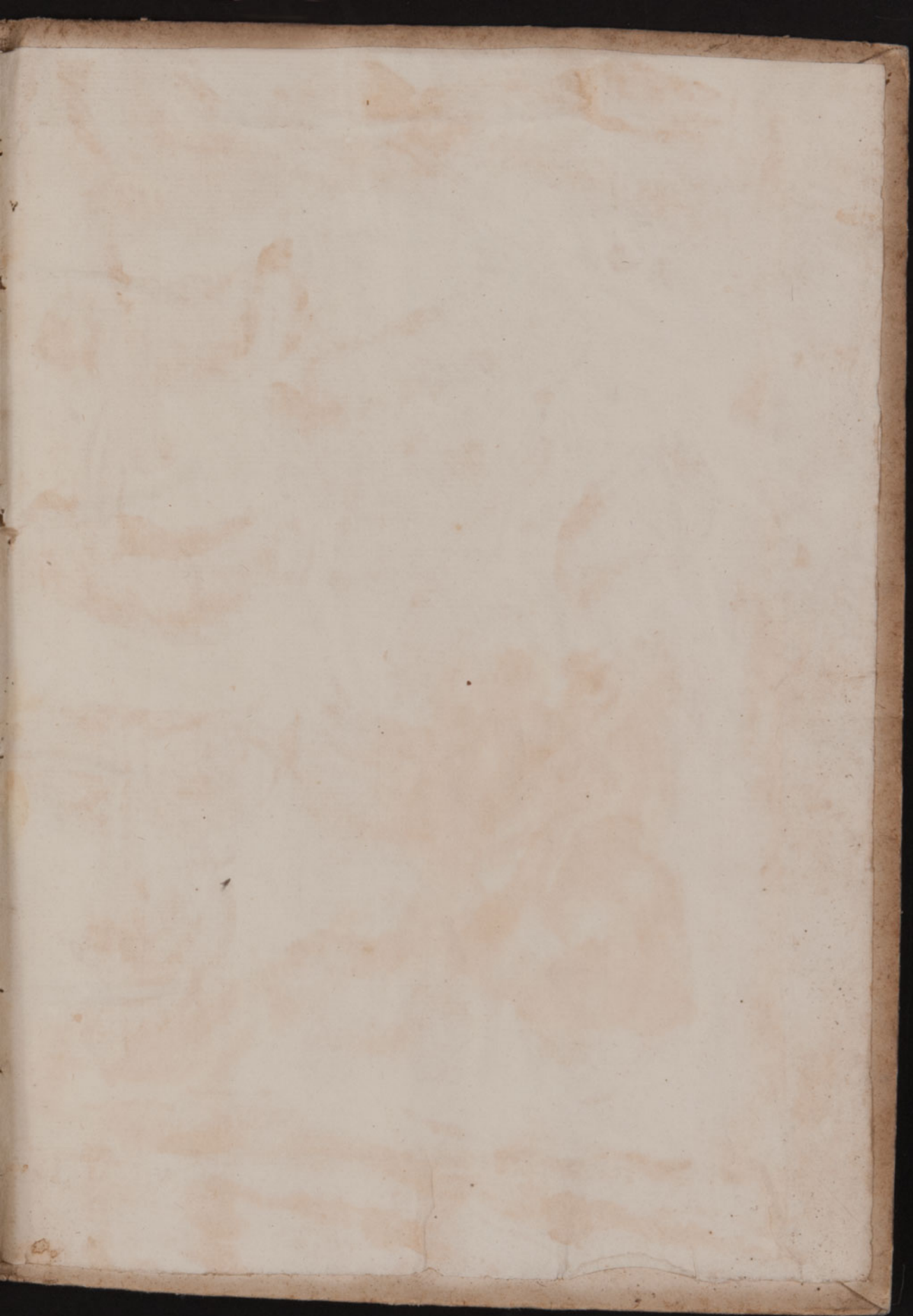


64









R. ISTITUTO

Sala

Palco *a*

N. Inv.